

## Running Water—Hot and Cold—in Every Farm House

Ever think of keeping the boys on the farm by introducing city comforts into the farm house? The city is no place for boys or girls, but the drudgery of the farm drives them there. Eternally pumping, and never having a bit of hot water for shaving, washing, or bathing, without resorting to the teakettle, which is most often empty and the fire low, doesn't make a home a "sweet, sweet home." With a good water system, with gravity tank in the attic or pressure tank in cellar, there is a constant supply of water in the boiler attached to the kitchen stove or heating jack, so that you can get hot water any time of the day or night—upstairs, downstairs, in bath room, bedroom, or kitchen. When you visit the city and realize the convenience of a hot and cold water system in the house, remember you can have the same, and at slight expense, right in your own home on the farm.

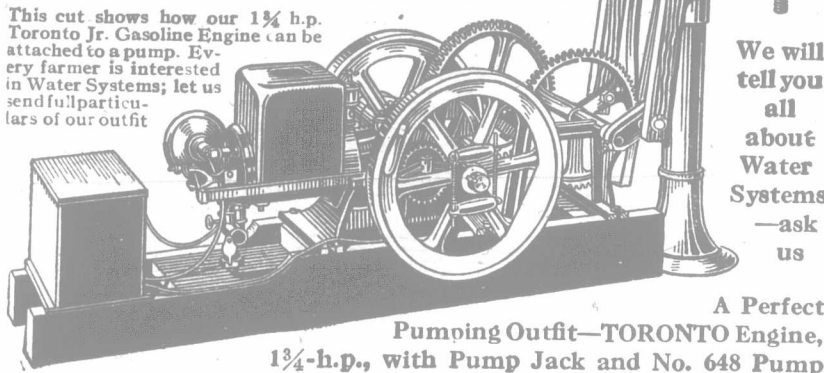
### Would You Like to Know What it Costs?

If you think it costs much, you're wrong. At least, if you purchase an Ontario Wind Engine and Pump Company equipment, you will find it gives endless satisfaction, faultless service, and **COSTS NO MORE THAN YOU CAN EASILY AFFORD.** Do you consider a Binder a good investment? Yet you use it only two weeks in the year. Compare that with the usefulness of a constant supply of **RUNNING WATER** in the House and Barn, all the year round, at practically the same cost. Consider the comfort of every member of your family—hot baths in winter, cool baths in summer, drinking and cooking water and washing water—*just by turning a tap.* The cost of operating a water system is about the same as the cost of Binder Twine for the Binder. Compare them—you see at once the Water System is a *Better Investment* than the Binder. You can't advantageously do without either. Our Water System is operated by Gasoline Engine, Windmill, or electric motor. We supply engines that give ample power for all farm work powerfully constructed, latest approved types and improvements, and at prices that demonstrate our determination to please.

### Ontario Wind Engine and Pump Co. Limited

93 Atlantic Ave., TORONTO  
Branches: MONTREAL, WINNIPEG, REGINA, CALGARY

This cut shows how our 1½ h.p. Toronto Jr. Gasoline Engine can be attached to a pump. Every farmer is interested in Water Systems; let us send full particulars of our outfit



Pumps of All Kinds

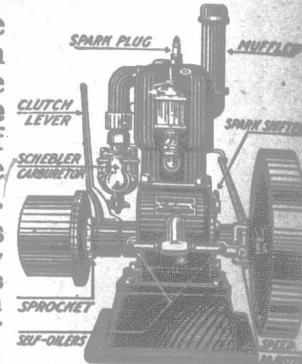
Catalog on request

We will tell you all about Water Systems—ask us

A Perfect Pumping Outfit—TORONTO Engine, 1½-h.p., with Pump Jack and No. 648 Pump

**4 H.P. Cushman Weighs Only 190 lbs**  
**8 H.P. 2 Cylinder Only 320 lbs**

Cushman Engines are the lightest weight farm engines in the world, yet they are even more **steady running, quiet and dependable** than most heavy engines, because of Throttle Governor, perfect balance and almost no friction nor vibration. The simple Cushman Governor releases just enough fuel to take care of the load at any moment, thus avoiding the fast and slow speeds at which most engines run. While Cushman Engines are only about **one-fourth the weight**, per horsepower, of most other stationary engines, they will deliver as much or more steady, reliable power, per rated horsepower, than any other farm engine made.

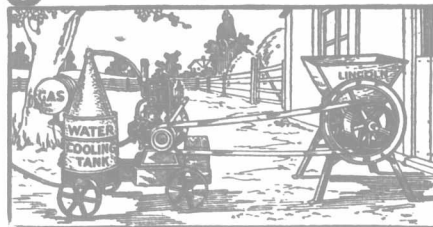


Note the Many Special Advantages Not Found On Other Engines.

### Cushman Light Weight Engines For All Farm Work—4 to 20 H. P.

Are not cheap engines, but they are **cheap in the long run**, as they do so many things heavy engines cannot do. May be attached to machines such as binders, balers, etc., to save a team. Easy to move around. Moving parts enclosed and run in bath of oil. Run at any speed—speed changed while running. Direct water circulating pump prevents overheating. Schebler Carburetor and Friction Clutch Pulley.

**Farmer's Handy 4 H. P. Truck**  
Easy to Move Around from Job to Job.  
Same Engine Used on Binder.



**The ONE Binder Engine**  
The Cushman 4 H. P. is the one practical binder engine. Its light weight and steady power permit it to be attached to rear of binder. Saves a team during harvest.

Dave Linton, Ransom, Ill., says: "I can do everything with the 190-lb. Cushman that I could with an engine that weighed 1000 lbs., and do it better and with a lot less noise."

Ask for our Light Weight Engine Book, sent free.

#### EXCLUSIVE SELLING AGENTS FOR

Fanning Mills—Smut and Pickling Machines—Vacuum Washing Machines—Lincoln Grinders—Lincoln Saws—Incubators—Universal Hoists—Automatic Cream Separators—Champion Cream Separators—Portable Grain Elevators—Wagner Hardware Specialties—Mountaineer and Little Giant Neck Yoke Centers.

### CUSHMAN MOTOR WORKS OF CANADA, LIMITED

283 Princess Street, Winnipeg, Man.

DISTRIBUTING POINTS FOR ONTARIO:

Foot of George Street, TORONTO, ONT. 143 York Street, LONDON, ONT.

When writing advertisers please mention Advocate.

## EXCEL FEATURES

From Engine to Nozzles

We first found what a Sprayer had to accomplish to be perfectly efficient. This took years of experience. The following high-class manufactured parts make for efficiency and give the reason why, for 16 years, "The Hardie" has led the field.

**Engine:** The Ideal, especially designed for spraying by R. E. Olds, the world's greatest gasoline expert.

**Pump:** The Hardie Pumps are made in several sizes. They are the lightest, and yet the most powerful pumps made.

**Tanks:** 200-gallon heart Cypress, the wood eternal.

**Frame:** High Carbon Pressed Steel, weight only 85 pounds. Ten times as strong as common structural iron used by others.

**Agitators:** Rotary type running in bronze bearings, lubricated with grease cups.

**Pressure Regulator:** The Peerless Pressure Regulator used on our pumps is without question the best device made for the regulating of the pressure. It not only holds the pressure to the dot, but takes the load off the engine when the nozzles are closed.

**Accessories:** Our Angle Cut Offs, Stay-There Hose Couplings, Spray Hose, Bamboo Rods and Aluminum Nozzles are all the best on the market.

We carry in stock at BURLINGTON a full line of these famous sprayers, both HAND and POWER. The best grade of spray Hose, brass and aluminum lined, extension rods; nozzles and other accessories. All repairs kept in stock.

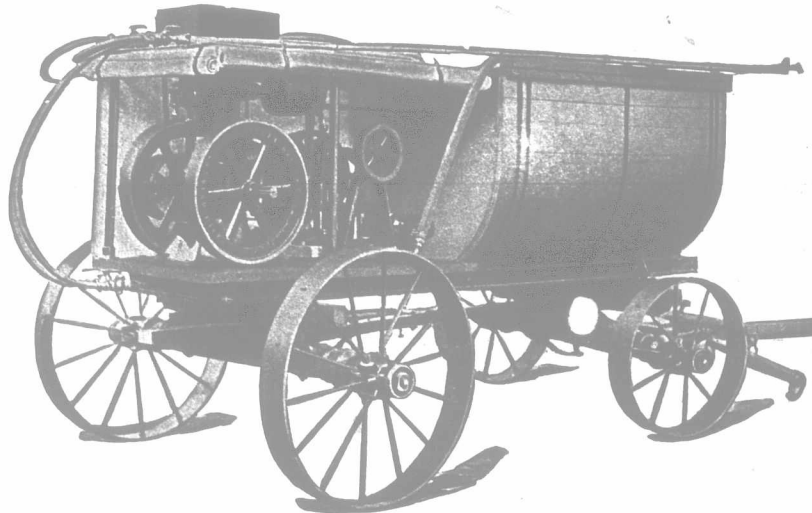
WE CAN FIT YOU WITH ANY SIZE SPRAYER TO SUIT ANY SIZE ORCHARD

## THE SPRAYER

YOU ARE LOOKING FOR

## THE "HARDIE"

The ONE that will be running when OTHERS are SCRAP



The Hardie Sprayer is known in every section of America. A post-card will bring the complete Catalogue of the HARDIE Line, and prices that are right.

**The Biggs Fruit & Produce Company, Limited**

Burlington, Ontario