

CHATEAU FRONTENAC, QUEBEC.

## Canadian Pacific Railway Hotel System

*Canadian Pacific Hotels from the Atlantic Ocean to the Pacific set the standard for hotel accommodation in Canada. Each hotel is distinctive in appointment and style; each has the same superb Canadian Pacific service*

THE CHATEAU FRONTENAC, Quebec, is a famous hotel in the most characteristic city of North America. Standing on Dufferin Terrace, it commands magnificent views of the River St. Lawrence.

THE ROYAL ALEXANDRA, Winnipeg, so well known and so popular with travellers that it has been enlarged to twice its original size.

THE PLACE VIGER, Montreal, is an ideal hotel for those who prefer quietness and yet wish to be within easy reach of the business centre.

THE PALLISER, Calgary, a handsome new hotel of metropolitan standard, from the roof of which the snow-capped Canadian Pacific Rockies are visible.

THE HOTEL VANCOUVER, a spacious hostelry that overlooks the Straits of Georgia and contains 650 rooms.

THE EMPRESS, Victoria, a luxurious hotel that appeals to the artistic sense, in a city of picturesque homes and Old Country atmosphere.

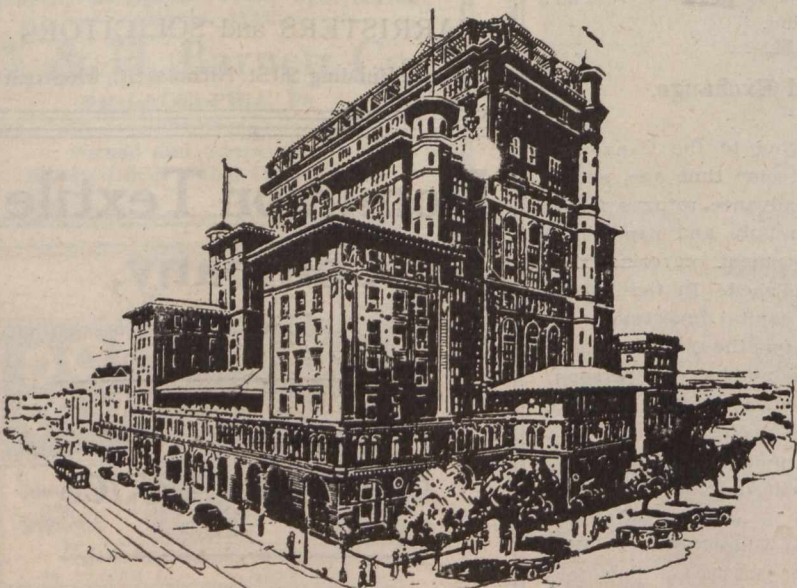
The above hotels, and others similarly situated at strategic points on the main transcontinental line of the Canadian Pacific Railway at McAdam, N.B., Sicamous, B.C., and Penticton, B.C., are open all the year round. Six other hotels, including four in the wonderful Canadian Pacific Rockies, are open in summer only.

Any C.P.R. Passenger Agent will furnish particulars, or write

C. E. E. USSHER,  
Passenger Traffic Manager

F. L. HUTCHINSON,  
Manager-In-Chief Hotel Dept.

CANADIAN PACIFIC RAILWAY, MONTREAL



HOTEL VANCOUVER, VANCOUVER.

## The Hartt & Adair Coal Co.

DEALERS IN THE

DELAWARE & HUDSON COMPANY'S  
LACKAWANNA COAL

TELEPHONE MAIN 5645

146 Notre Dame Street West - MONTREAL

## P. K. Company, Limited

Sommer Building,

37 Mayor Street - Montreal

Carry large supplies of—

**Perrins Gloves**

**Kayser Gloves**

**Radium Hosiery**

## "M.R.M." HORSE SHOES

Mean Good Luck to Horseowners

"M. R. M." Shoes fit easily, because of their natural shape and well drawn heels. Nail holes are punched at the proper angle, clearly cut and accurately spaced the right distance inside the edge of the shoes — which means proper fit.

Rigid inspection is given "M. R. M." Shoes before they leave our factory, so that they can be depended upon.

Price List and all Information on request.

THE MONTREAL ROLLING MILLS CO.  
MONTREAL, P.Q.

Chimneys Globes Pressedware  
Bottles Jars Tumblers

HIGHEST QUALITY TANK GLASS PRODUCTIONS  
Flint, Light Green, Dark Green, Blue, Opal, Amber

OWEN'S MACHINE MADE WARE---for all Closures

Dominion Glass Company, Limited

Head Office: MONTREAL

Export Office: MONTREAL

MONTREAL TORONTO

Factories:  
HAMILTON

WALLACEBURG

REDCLIFF