

Electric Service

Means comfort, convenience, economy, and safety.

The home that is completely equipped with electrical devices is a happy one.

All the drudgery of housekeeping is eliminated by electricity.

You can wash, iron, sew, sweep, cook, keep cool in summer and warm in winter, by means of electrical apparatus designed especially to relieve you of unnecessary and fatiguing labor.

At our showrooms all these devices are ready for your inspection. Competent demonstrators will operate and explain them for you.

**The Toronto Electric Light
Company, Limited**

"AT YOUR SERVICE"

12 Adelaide St. E. Telephone Adel. 404

CANADIAN NORTHERN

ALL THE WAY

BETWEEN

T O R O N T O
W I N N I P E G

AND

V A N C O U V E R

VIA

PORT ARTHUR **FORT WILLIAM**
SASKATOON and **EDMONTON**

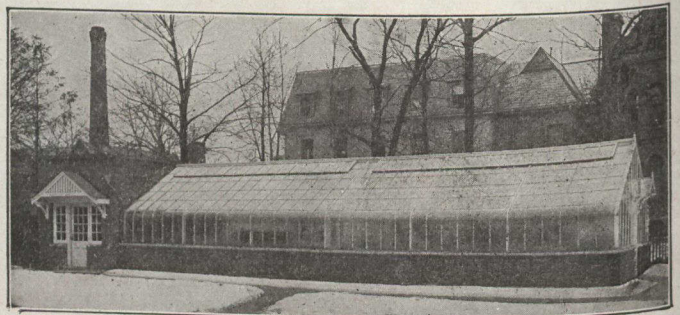
Connections at Winnipeg Union Station for Calgary, Prince Albert, Regina, Brandon, and all important points in Western Canada and the Pacific Coast.

LEAVE TORONTO 10.45 P.M.
MONDAY WEDNESDAY FRIDAY

ALL MODERN EQUIPMENT
RELIABLE EXPRESS SERVICE



Through tickets to all points and Berth Reservations from Local Agent, or write to General Passenger Dept., 68 King St. E., Toronto, Ont., or Union Station, Winnipeg, Man.



What Are Your Wishes Regarding a Greenhouse?

We are equipped to meet your wishes in every particular in the matter of a greenhouse, and it would be well worth your while to send us your name and address, and we will mail you a copy of our beautiful booklet, illustrating some of the styles and designs of greenhouses we have already erected.

Though we build a great variety of greenhouses—they are all alike in the matter of efficiency and those points in construction the professional gardener demands.

When writing for booklet, Address Dept. C.,

GLASS GARDEN BUILDERS, LIMITED

201 Church St.,
Toronto.

Transportation Building, St. James St.,
Montreal.

Factory—Georgetown, Ont.

Victoria Drinks in Sunshine

and smiles on the sojourner. A bit of Old England in Canada's newest land of golden promise—a City of Gardens—fine motoring roads, among the most noted being the celebrated Malahat drive. Giant Douglas fir trees shoot straight upward for 300 feet—stately wooded cloisters—and the sunshine sparkles in a clear cool blue sky almost continually. Visit Victoria either going or returning through the

Canadian Pacific Rockies

on the world's greatest transportation system—the

Canadian Pacific Railway

No side trips necessary—every comfort and luxury at moderate cost.

Everything Canadian Pacific Standard—None Better.

For further information apply to any Canadian Pacific Ticket Agent, or W. B. Howard, District Passenger Agent, Toronto.



RITZ CARLTON HOTEL
SHERBROOKE ST. WEST, MONTREAL

TARIFF

Single Room and Bath from \$3.00 up.

Double Room and Bath from \$5.00 up.

Table D'Hôte and a la carte Meals at Moderate Prices.

CANADA'S FINEST HOTEL

FRANK S. QUICK, Manager