

1053—Girl's Dress with Long or Short Sleeve.—This popular style has raglan sleeve, portions combined with a yoke, to which the back is joined. The front of the waist is shaped at the closing. The sleeve may be finished in wrist length with a band cuff, or in short length with a turn back cuff. The skirt is plaited under the belt. The design is good for serge, cashmere, velvet, corduroy, galatea, linen, gingham, chambray or percale. The pattern is cut in 4 sizes: 6, 8, 10 and 12 years. It requires 3 1/4 yards of 44-inch material for a 10 year size. Pattern 10c.

1052.—Ladies' House or Home Dress. Blue chambray with trimming of blue and white checked gingham is here shown. The waist is shaped at the closing in front, and finished with a round rolling collar. The sleeve in wrist length has a band cuff. In short length it is

The neck is finished in square outline, with a neat shaped collar. The sleeve in wrist length is close fitting. The short sleeve has a pointed cuff. A shaped belt covers the joining of waist and tunic. The pattern is good for velvet, corduroy, silk, charmeuse, crepe, broadcloth, voile or cashmere. The pattern is cut in 4 sizes: 14, 16, 17 and 18 years. It requires 5 1/4 yards of 44-inch material for a 17 year size. Pattern

1073—Ladies' Basque, with or without Sash Drapery.—This attractive style was effectively developed in brown charmeuse, with fancy buttons and stitching for trimming. The basque is fitted with shoulder, under-arm and dart seams. The front extension is gathered at the side, and meets a sash drapery that may be omitted. The sleeve, a one-piece model, may be in wrist or short length, finished with a neat cuff. The pattern



finished with a facing. The skirt has a lap tuck at the front and back, and is joined to the waist under the belt. The pattern is cut in 6 sizes: 34, 36, 38, 40, 42 and 44 inches bust measure. It requires 6 1/2 yards of 36-inch material for a 36-inch size. The skirt measures about 2 yards at its lower edge. Pattern 10c.

1057—Boy's Suit with Trousers.—This style makes a splendid coat or jacket suit for the small boy. It may be of velvet, vorduroy, serge, cheviot, flannel, galatea, gingham, kindergarten cloth, drill or linen. The trousers are cut in regulation style. The blouse is made with overlapping fronts and a broad or small collar, as preferred. The pattern, cut in 4 sizes: 3, 4, 5 and 6 years, requires 2 7/8 yards of 44-inch material for a 4 year size. Pattern 10c.

1058—Costume for Misses and Small Women.—Brown serge in a new shade was used for this model, with facings of green satin on collar, sleeve and belt. The dress is made with regulation waistline, and has a long tunic, the front of which is cut in one with a vest portion, to which the waist fronts are joined.

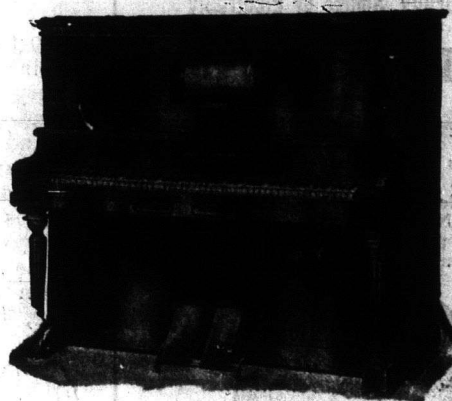
is cut in 6 sizes: 34, 36, 38, 40, 42 and 44 inches bust measure. It requires 3 1/4 yards of 40-inch material for a 36-inch size. Pattern 10c.

1064-1071—A Splendid Combination for Travelling, Shopping or General Wear.—Cape wraps are a new and popular style feature. The model here shown combines a waist coat, that may be omitted. Pattern 1064 supplies the cape wrap. It is cut in 5 sizes: 34, 36, 38, 40 and 42 inches bust measure. The skirt is made from pattern 1071, and is cut in five sizes: 22, 24, 26, 28 and 30 inches waist measure. It requires 7 1/2 yards of 36-inch material for cape and skirt, for a medium size, with 2 1/2 yards for the waist coat of 27-inch material. Two patterns, 10c each pattern.

1061—Ladies' Dressing or House Sack.—This dainty model may be finished with long or short sleeves. It is suitable for lawn, percale, or dimity, for cashmere, crepe, silk, flannel or flannel-ette. The pattern is cut in 6 sizes: 34, 36, 38, 40, 42 and 44 inches bust measure. It requires 2 1/2 yards of 44-inch material for a 36-inch size. Pattern 10c.

Every Member of Your Family Can Be A Master Musician!

That statement sounds a little exaggerated, doesn't it? But nevertheless, it is perfectly true. "Every member of your family can be a master musician." How? Simply put a



Player-Piano—Style 120

Sherlock-Manning 20th Century Player-Piano "Canada's Biggest Piano Value"

in your home. It will be a delight for the whole household—for many years to come.

The **Sherlock-Manning Player-Piano** has the **Otto Higel Mechanism**—the newest and best player mechanism produced, and is controlled so easily that the tiniest child can render correctly any musical composition.

Two notable features of the **Sherlock-Manning Player-Piano** are the **Solo-dant** (which subdues the accompaniment to the melody—brings out the theme—or correctly accents the melody), and the **Tempo-Aid** (which translates into the music each touch of emotion on the part of the performer).

We can save you over \$100 on the purchase of a player-piano. You owe it to yourself and family to investigate this superb instrument before purchasing elsewhere. Write Dept. 14 for particulars and handsome art catalogue A.

The Sherlock-Manning Piano Co.

London

(No Street Address Necessary)

Canada 61

The Winnipeg Piano Company, 333 Portage Avenue

carry a complete assortment of Sherlock-Manning Pianos and Organs. Catalogues and prices mailed free on application. Easy terms of payment arranged.

Special Winter Offer

WEEKLY FREE PRESS and PRAIRIE FARMER, Winnipeg	\$1.00
WESTERN HOME MONTHLY, Winnipeg	1.00
REGULAR Price-	\$2.00

Snap Offer Both for One Year \$1.25

This offer does not apply to those living within the City of Winnipeg limits or in the United States of America. It holds good, however, to Great Britain.

1914
WESTERN HOME MONTHLY, Winnipeg.
Find enclosed \$1.25 for which send the Weekly Free Press and Prairie Farmer, Winnipeg, and The Western Home Monthly to the following address for one year.