



MISS PERCY HASWELL IS BACK WITH US FOR HER FOURTH SEASON OF SUMMER STOCK.



Mlle. NORY, IN TAILOR-MADE GOWN BY DRESCOLL, PARIS, OF KHAKI TISSU, WITH EMBROIDERED BELT.



CARERE MODEL OF TAN TISSU TRIMMED WITH LACE



Mlle. BOYV IN A REDFERN MODEL TAILOR-MADE OF CREAM SERGE, TRIMMED WITH GOLD BUTTONS AND CHERISE BELT OF GLAZED LEATHER.

## Latest Ideas from Paris Shops



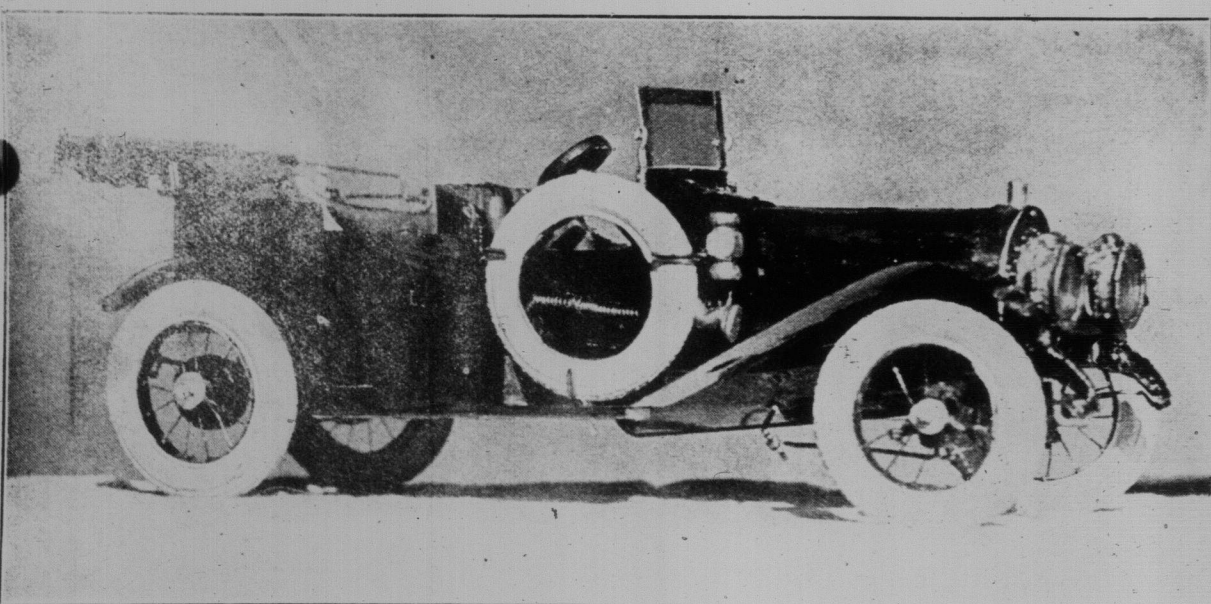
CREPE FOR MOURNING WHICH FOR A FEW YEARS HAS BEEN ALMOST ENTIRELY DISCARDED IS BEING REVIVED, BUT IS RELIEVED BY WHITE CHEMISSETTE AND EDGING ON SLEEVES AS SHOWN IN THE ILLUSTRATION BY BEER.



A PARISIAN MODEL SHOWING SHORT LACE TUNIC AND DRAPED SKIRT

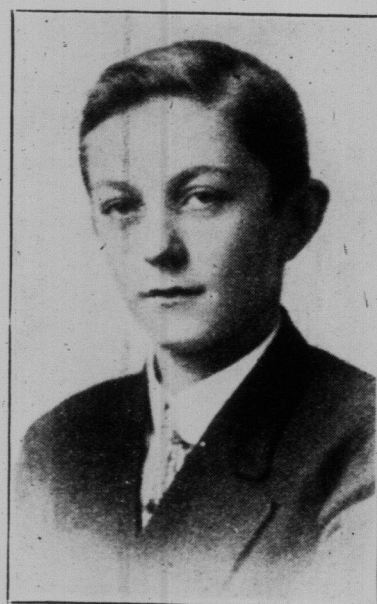


OPENING OF "PALESTINE IN TORONTO." GROUP SHOWING THE COSTUMES OF THE HOLY LAND. IN THE CENTRE, FROM LEFT TO RIGHT ARE REV. MR. SCHOR, BISHOP SWEENEY AND CANON DIXON.



THIS AUTOMOBILE WAS BUILT BY MILTON HOWLAND, 12 CLARENDON AVE.; AGED 15 YEARS.

Five samples of Staggard Republic rubber tires were given to this boy at the auto show, and with a pair of pliers, and such tools as he happened to have, he constructed this car in his own home, fashioning it after his father's Stevens Duryea. The car stands four and a half inches high, and fourteen inches long, and every detail has been fully followed out, including radiator, glass front, top leather cushions, hood, steering wheel, lamps, tank, etc. It is on view at the showrooms of the Dominion Auto Company.



MILTON HOWLAND, WHO BUILT THE MODEL AUTOMOBILE.



A TYPICAL CHAPEAU AND A FASHIONABLE FICHU

Patience: "Hasn't Miss Oldun got searching eyes?"  
Patrice: "Well, I don't wonder at it. She's been looking for a husband for 20 years.—Modern Man."

### From Both Points of View

yours and ours—you will be far better off after we have fitted you with correct glasses. You will not feel those pains in the head, you will see clearer and at longer distances. We are expert opticians and guarantee complete satisfaction to all our customers. Come in when passing and let us examine your eyes. You may need immediate treatment.

ERNEST A. LEWIS

OPTICIAN

93 1/2 Yonge St. - Phone M. 5031



## Are You Buying An Electric Cleaning Machine?

Decide on nothing until you see the "INVINCIBLE" at work. You won't regret it. The "INVINCIBLE" is the machine that has stood the test. Powerful, silent and efficient, portable or stationary machines.



The Invincible Renovator Mfg. Co.  
81 PETER STREET, TORONTO Limited