

the next annual contest, when it is again competed for. Should, however, a member retain possession of it for three consecutive years, he becomes entitled to it altogether.

Why cannot we have something of this nature in connection with our Canadian Clubs, or for annual competition among the players of the Province of Quebec? Our Dominion Chess Association has not exhibited much life lately; might not a prize of this sort advantageously take its place? Our indefatigable chess correspondent, Mr. Shaw, is just the person to be entrusted with such an undertaking, and should he be as successful with it as he has been with his Dominion Chess Correspondence Tourney, he would never regret the trouble. Fifty dollars could be easily raised which would purchase a prize that would for some time, at least, be an object to excite the ambition of our amateurs, and attract attention generally to the game and its votaries.

A chess circle of ladies has been formed in Columbia, S. C. Mr. John O. Holman, the present holder of the challenge cup of the St. Louis Chess Club, was recently challenged by Mr. Max Judd, who tendered him the odds of knight, but the former succeeded in retaining the cup by 3 to 1. We have stated that Mr. Judd undertook too great a task in attempting to win the cup and to hold it at this odds against the amateur local chess talent, and this match proves our assertion. We are happy to say for the cause of chess, that within the last three years there have arisen in our city three or four strong chess players. These, together with the old ones, make six or eight players to whom Mr. Judd would find it next to impossible to give the odds of knight. Mr. Holman now holds himself in readiness to accept challenges. Who will be the next to throw down the glove? The challenge cup consists of a beautiful silver goblet, valued at \$35, and bears the names of the winners.—*Globe Democrat*.

A game of chess was played January 21st, by telegraph, between the C. C. Clubs of Bradford and Woodstock. After a close battle of four hours' duration, the game resulted in a draw.—*Toronto Globe*.

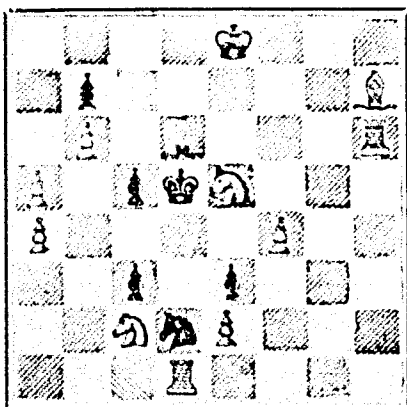
The Rev. A. Cyril Pearson announces that towards the end of January he will publish a book containing 100 of his problems. The price is 25 cts. Mr. Pearson is one of the most distinguished of English composers, his works being full of great delicacy and finish. The book will form a welcome addition to the library of every chess lover.

PROBLEM No. 211.

(From "Chess Chips.")

By Rev. A. Cyril Pearson.

BLACK.



WHITE
White to play and mate in two moves.

GAME 334TH.

One of the eight games played by Mr. J. H. Blackburne without sight of boards or men and situation equally, at Manchester, Eng., on the 9th of November last.

(Two Knights' Defence.)

WHITE.—(Mr. Blackburne.) BLACK.—(Mr. Duerden.)

- | | |
|------------------|---------------------|
| 1. P to K4 | 1. P to K4 |
| 2. Kt to K3 | 2. Kt to Q3 |
| 3. B to B4 | 3. Kt to B3 |
| 4. P to Q4 (a) | 4. P to Q3 (b) |
| 5. Kt to K2 | 5. P to Q4 |
| 6. P takes Q P | 6. Kt takes P |
| 7. Castles | 7. B to K3 |
| 8. R to Ksq | 8. B to Q3 |
| 9. P takes P | 9. B to K2 |
| 10. Kt takes B | 10. P takes Kt |
| 11. Q to Kt4 | 11. K to B2 |
| 12. Kt to B3 | 12. Q Kt to Kt5 (c) |
| 13. P to Q R3 | 13. P to K R4 (d) |
| 14. Q to B3 (ch) | 14. K to Kt sq |
| 15. P takes Kt | 15. B takes P |
| 16. Kt takes Kt | 16. B takes R |
| 17. Kt takes P | 17. Q takes Kt |

White mates in three moves.

NOTES.

(a) The uncertainty that prevails about some of the openings is illustrated by the fact that it has never yet been conclusively settled whether this continuation or Kt to K2 is superior.

(b) He should of course take the Pawn.

(c) Black cannot be congratulated either upon his play or his position.

(d) If Kt takes P, White replies with B takes Kt, winning a piece if the Pawn retakes, and doing a considerable amount of damage if Black capture one of the Rooks instead.

GAME 335TH

(From the *Globe Democrat*.)

A brilliant game played at the Cleveland (Ohio) Chess Club, November 15th, by Captain Mackenzie against Messrs. McKim, Yates, White, and others consulting. The notes are by Mr. Steinitz.

(Evans' Gambit.)

WHITE.—(Capt. Mackenzie) BLACK.—(The Allies.)

- | | |
|-------------------|--------------------|
| 1. P to K4 | 1. P to K4 |
| 2. Kt to K3 | 2. Kt to Q3 |
| 3. B to B4 | 3. B to B4 |
| 4. P to Q Kt4 | 4. B takes P |
| 5. P to B3 | 5. B to R4 |
| 6. P to Q4 | 6. P takes P |
| 7. Castles | 7. P to Q3 |
| 8. P takes P | 8. B to Kt3 |
| 9. Kt to Q B3 | 9. Kt to R4 |
| 10. B to Kt5 | 10. Kt to K2 (a) |
| 11. Kt to Q5 | 11. Kt takes B (b) |
| 12. B takes Kt | 12. Q to Q2 |
| 13. B to K B6 (c) | 13. Castles (d) |
| 14. Q to Bsq (e) | 14. Q to Kt5 (f) |
| 15. Kt to K7 (ch) | 15. K to Rsq |
| 16. Q to R6 | 16. B to K B4 (g) |
| 17. Kt takes B | 17. Resigns. |

NOTES.

(a) Q to Q2 at this juncture gives the defense a more satisfactory game.

(b) P to K B3 has been discarded here on account of the sacrifice of the B, but we are not quite satisfied of the strength of White's attack arising therefrom.

(c) A strong move which entangles the defense in great difficulties.

(d) Fatal. Their only chance consisted in Q to K Kt5, threatening to bring out the B to K3. If White then answered P to K R3, the Queen could retreat to Kt3, having another comfortable post at K R3 on hand, if further attacked by the adverse K Kt.

(e) Finely played. He threatens now the irresistible Q to K Kt5, besides winning the Kt. White grasps the situation with clear judgment.

(f) The allies were reduced to that unsatisfactory resource. K to R sq was equally bad, for White would have proceeded with B takes P (ch); Q to Kt5 (ch); Q to B6 (ch); and Kt to K7, which wins the Q.

(g) The position is very pretty, and the allies have no defense. Their K Kt P is pinned in one direction, and if they capture the B the destructive answer Q takes R (ch) follows. White also threatened the finishing stroke Kt to Kt5.

SOLUTIONS.

Solution of Problem No. 209.

- | | |
|-------------|--|
| WHITE. | BLACK. |
| 1. Kt to K7 | 1. K takes Kt, or Kt to Q3 or B4, or P moves |
| 2. Q to Q8 | 2. Anything. |
| 3. Q mates | |

Solution of Problem for Young Players No. 207.

- | | |
|--------------|---------------|
| WHITE. | BLACK. |
| 1. Kt to Q5 | 1. P moves |
| 2. R to Q B8 | 2. K to Q Kt6 |
| 3. R mates | |

PROBLEMS FOR YOUNG PLAYERS, No. 208.

- | | |
|----------------|-----------|
| WHITE. | BLACK. |
| K at Q R6 | K at Q B4 |
| R at Q6 | Pawn K B4 |
| Kt at K Kt3 | |
| Pawns at K4 | |
| Q R3 and Q Kt3 | |

White to play and mate in two moves.

TO LET.

In those central premises forming the corner of Bleury and Craig Streets, and in the adjacent house on Craig Street—

OFFICES, double and single.

FLATS, admirably adapted for light manufacturing business, with or without steam power. Rent moderate.

Apply to

G. B. BURLAND,
No. 7 Bleury Street.

25 FANCY CARDS with Name 10c. Plain or Gold, Agents' Outfit 10c. 150 Styles. Hull & Co., Hudson, N. Y.

J. K. MACDONALD,

BLACKSMITH, BELL HANGER, LOCK SMITH &c., 24 Latour Street, Montreal.

REPAIRS PROMPTLY ATTENDED TO.

17-90-59-84.



White FREE to all applicants. It contains 2 colored plates, 500 engravings, about 150 pages, and full descriptions, prices and directions for planting over 1200 varieties of Vegetable and Flower Seeds, Plants, Roses, Etc. Invaluable to all. Send for it. Address D. M. FERRY & CO. Detroit Mich.



THOMAS CREAN,
MILITARY TAILOR.

Master Tailor to the Queen's Own Rifles. Late Master Tailor in H. M. 16th Regiment. Uniforms and accoutrements strictly in accordance with the "Dress Regulations for the Army," and of the best workmanship and quality. The New Regulation Helmet in stock. Price Lists sent on application. 435 YONGE STREET, Toronto.

LONDON MANUFACTURING CO.'S

ESSENCES OF MEATS,

For Invalids, Travelers, and Persons of Delicate Health.

ESSENCE OF BEEF.

ESSENCE OF MUTTON.

ESSENCE OF CHICKEN.

These Essences consist solely of the Juices of the Finest Meats extracted by gentle heat without the addition of water or any substance, and are ready for use direct from the can, without further preparation, and will be retained by the stomach in the most severe cases of illness.

An excellent stimulant in cases of Diphtheria, Hemorrhage, and all cases of depressed system, and low vital power; almost a specific in cases of sea sickness and dyspepsia, and the ailments of infants in summer have been cured by this excellent Essence.

Wholesale by LYMANS, CLARE & CO., and H. SUGDEN EVANS, and by all Druggists and Grocers.

CARDS—10 1/2 by of the Valley, 10 Scroll, 10 Engraved—10 Transparent, 1 Model Love Letter, 1 Card Case—name on all, post-paid, 15c. 4 packs 50c. WARD & CO., NORTHFORD, CONN.

British American
BANK NOTE COMPANY,
MONTREAL.

Incorporated by Letters Patent.
Capital \$100,000.

General Engravers & Printers

Bank Notes, Bonds,
Postage, Bill & Law Stamps,
Revenue Stamps,
Bills of Exchange,
DRAFTS, DEPOSIT RECEIPTS,
Promissory Notes, &c., &c.,
Executed in the Best Style of Steel Plate
Engraving.

Portraits a Specialty.
G. B. BURLAND,
President & Manager.



Canadian Pacific Railway.

The time for receiving tenders for the sections between Lake Superior and Red River is extended until noon on WEDNESDAY, January 15th, 1879.

The time for receiving tenders for the sections in British Columbia is extended until

WEDNESDAY, the 12th day of February, 1879.

For further information, apply at the office of the Engineer-in-Chief, Ottawa.

By order,
F. BRAUN,
Secretary.

Department of Public Works,
Ottawa, 19th Dec., 1878.

FURTHER EXTENSION OF TIME.

The time for receiving tenders for the sections between Lake Superior and Red River is further extended until noon of THURSDAY, the 30th day of January, 1879.

F. BRAUN,
Secretary.

Department of Public Works,
Ottawa, 7th Jan., 1879.

IMPORTANT NOTICE.

THE
Burland-Desbarats Lithographic Co.
5 & 7 BLEURY ST.,

Begs to inform the BANKERS, MERCHANTS and BUSINESS MEN of the Dominion, that their large establishment is now in full operation, and that they are prepared to do all kinds of

ENGRAVING,
ELECTROTYPING,
STEREOTYPING,
LITHOGRAPHING
AND TYPE PRINTING,
Photo-Electrotyping & Wood Engraving

IN THE BEST STYLE, AND AT LOW PRICES.

Special attention given to the reproduction by

Photo-Lithography

OF
MAPS, PLANS, PICTURES OR BOOKS

OF ANY KIND.

From the facilities at their command, and the completeness of their establishment, the Company feel confident of giving satisfaction to all who entrust them with their orders.

G. B. BURLAND,
Manager.

WANTED A GOOD MAN FOR every State to sell our goods by sample. Fair Salary paid. References required. LA BELLE MANUFACTURING CO., 93 Clark Street, Chicago, Ill.

ROBERT MILLER,

Publisher, Book-Binder, Manufacturing and
WHOLESALE STATIONER.

IMPORTER OF

Wall Papers, Window Shades and
SCHOOL BOOKS,

307, NOTRE-DAME STREET, MONTREAL.

14-6.

TO LET.

One of those Comfortable Houses in Abbotsford Terrace, No. 1466 St. Catherine Street, opposite Emmanuel Church, in good repair, with all modern conveniences. Rent moderate.

Apply to

G. B. BURLAND,
No. 7 Bleury Street.

THE COOK'S FRIEND
BAKING POWDER

Has become a HOUSEHOLD WORD in the land, and is HOUSEHOLD NECESSITY

in every family where Economy and Health are studied. It is used for raising all kinds of Bread, Rolls, Pancakes, Griddle Cakes, &c., &c., and a small quantity used in Pie Crust, Puddings, or other Pastry, will save half the usual shortening, and make the food more digestible

THE COOK'S FRIEND

SAVE TIME,
IT SAVES TEMPER.

IT SAVES MONEY

For sale by storekeepers throughout the Dominion, and wholesale by the manufacturer.

W. D. McLAREN, UNION MILLS,
17-19-52-362 55 College Street.

THE

Canadian Spectator,

A high-class Weekly Journal,

EDITED BY THE

Reverend A. J. BRAY.

SUBSCRIPTION: \$2.00 PER ANNUM.

OFFICES: 162 St. James Street, Montreal, and 4 Toronto Street, Toronto.

THE MILTON LEAGUE.

"Give me the liberty to know, to think, to believe, and to utter freely, according to conscience, above all liberties.—Milton."

PUBLICATIONS:

- | | |
|---|--------|
| BRAY, REV. ALFRED J. The Churches of Christendom, cloth. | \$1.00 |
| BROWN, REV. J. BALDWIN. The Doctrine of Annihilation in the Light of the Gospel of Love | 50 |
| DALE, REV. R. W. Protestantism: Its Ultimate Principle | 60 |
| The Ten Commandments | 60 |
| DAWSON, GEO., M.A. Prayers, and a Discourse on Prayer | 50 |
| MCLEOD, NORMAN, D.D. Scotch Pebbles | 15 |
| TIPPLE, Rev. S. A. Echoes of Spoken Words | 50 |

"Here is a new wave of literature, and of the deep and wide sea of religious thought, but sparkling and bright and gratefully refreshing."—*Literary World*.

GRAY'S SPECIFIC MEDICINE.

TRADE MARK. The Great English Remedy. TRADE MARK.

will promptly and radically cure any and every case of Nervous Debility and Weakness, result of Indiscretion, excess or overwork of the brain and nervous system; is perfectly harmless, acts like magic, and has been extensively used for over thirty years with great success.

Full particulars in our pamphlet, which we desire to send free by mail to every one. The Specific Medicine is sold by all druggists at \$1 per package, or six packages for \$5, or will be sent free on receipt of the money by addressing

THE GRAY MEDICINE CO.,

WINDSOR, ONT.

Sold in Montreal by all Wholesale and Retail Druggists, and everywhere in Canada and United States.

CHEAPEST AND BEST.



JOHN DOUGALL & SON,

218 and 220, St. James Street, Montreal

Electrotyping and Job Printing, Chromatic and plain.