

can afford the consumptive—is at best only palliative. The cure of consumption depends upon two essential conditions: 1st, the arrest of the abnormal breaking down of the tissues, which prevents emaciation, and 2nd, the restoration of healthy nutrition, in order to stop the formation of tuberculous matter. Fulfill these conditions, and consumption is as curable as fever. To fulfill these conditions the required remedy must increase the appetite, favour the assimilation of food, and enrich the blood, thus retarding the development of tubercles. To accomplish this, a more powerful alternative than Dr. Pierce's Golden Medical Discovery has never been discovered. At the same time, it soothes the irritation of the nervous system produced by violent coughing, which in its turn so often leads to more serious results. The use of "expectorants" in consumption is absolutely suicidal. For while removing the tubercles already formed, they produce yet more serious results by inflaming and destroying the sound and healthy tissues. Consumption requires a remedy that will soothe while it relieves; harsh medicines but add fuel to the flame that already threatens to consume the system. The Golden Medical Discovery fulfills these conditions, and has been pronounced the best remedy yet discovered to allay and arrest consumption.

OUR CHESS COLUMN.

Solutions to Problems sent in by Correspondents will be duly acknowledged.

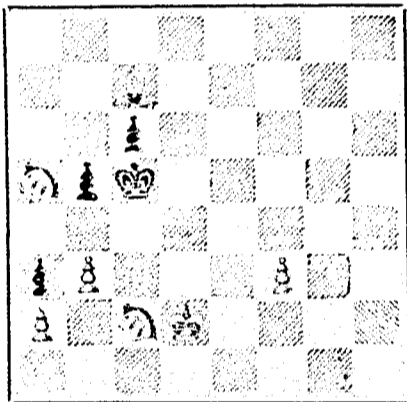
TO CORRESPONDENTS.

- J. W. S. Montreal.—Solution of Problem No. 171 received. Correct. Letter containing valuable information received. Thanks.
Student, Montreal.—Correct solution of Problem No. 71 received.
M. J. M. Quebec.—Solution of Problem No. 167 received. Correct.
B. S. Montreal.—The games shall have due attention.
E. H. Montreal.—Solution of Problem for Young Players No. 105 received. Correct.
W. A. Montreal.—Letter received. Many thanks.

PROBLEM No. 172.

By M. J. MURPHY, Quebec.

BLACK.



WHITE.

White to play and mate in three moves.

(From the Chess Player's Chronicle, for April, 1878.) We had sent you not long since a copy of the CANADIAN ILLUSTRATED NEWS, in the Chess Column of which we were glad to see a letter from Mr. Shaw, proposing a Canadian Correspondence Tourney. Mr. Shaw complains of the indifference shown to Canadian Chess by English Chess journals. On our part, we beg to assure him that there is no indifference, but simply lack of information. If the Chess players of the Dominion will only take the same pains to keep us in current with their proceedings as those of the Antipodeans, we will give them the same prominence, but do not appear to have done so.

From accounts published recently by Chess journals it appears that in Australia and New Zealand the game of Chess is becoming very popular, and that Clubs are being established in all the rapidly growing cities of those distant parts of the world. The Sydney Club is well at work, and so is also the Club at Adelaide. At Melbourne they have a flourishing Club, which was increased during the past twelve months by fifteen new members.

In New Zealand the interest in the game is most encouraging. Clubs exist in all the chief cities; Chess columns are to be found in several weekly papers, and frequent tourneys and matches testify to the enthusiasm that prevails.

At Dunedin the Chess Club numbers thirty-five members, and at Wellington, also, they have a very flourishing association of players.

Strong players seldom find an opponent worthy of their attention, and consequently, with all their knowledge and love of the game, have comparatively very little enjoyment from actual play, and often have to amuse themselves by playing over the games of others. On the other hand, the problemist finds pleasure even at the sight of his men; he knows that they are the willing instruments of his imagination; that they will assist him in his endeavour to puzzle the world; they are his companions; their checked play ground is his; he lives with them; he loves them, and is satisfied. The solver, when he wants an opponent, does not, of necessity, resort to the favourite club-rooms to find him, he meets him in the conception of others; in fact, obtaining a solution to a problem is a hard to hand encounter between the composer and the solver. To me there is no game so absorbing, or result more satisfactory, than the solution of a beautiful and difficult Chess problem.—R. S. Wash, in Chess Journal.

Mr. Blackburne's latest blindfold exhibition resulted as usual in his complete success. Out of the eight games he won seven, and one was drawn. This man Blackburne is beating the world on blindfold Chess. Where is Paulsen's ghost?

In the International Tourney, Crake, of England, has resigned a game to Foster, of Michigan. This makes honours even—three for Great Britain and three for America. Let the Envoys make a note of this.—Hartford (Conn.) Times.

CHESS IN GREAT BRITAIN. GAME 257th.

Played by Correspondence in Mr. Nash's Tourney. (King's Bishop's Gambit.)

- (H. BIVAN, Ayr.) WHITE: 1. P to K 4, 2. P to K B 4, 3. B to B 4, 4. B takes P, 5. K to B sq, 6. Kt to Q B 3, 7. Kt to K B 3, 8. P to Q 4, 9. P to K R 4, 10. K to Kt sq, 11. B takes Kt ch, 12. Kt to K 5, 13. B takes P, 14. B takes P, 15. Kt to K 2, 16. Kt to K R 4, 17. P to K R 5, 18. Q takes P, 19. P takes B, 20. Q to K B 3, 21. Q to K 3, 22. R to R 1, 23. Q to Q Kt 3, 24. R P takes Q, 25. P to K 6, 26. R to K sq, 27. R takes R, 28. Kt to Q 5, 29. P takes B, 30. P to Q B 4, 31. P to K Kt 3, 32. K to Kt 2, 33. K to B 3, 34. R to K 4, 35. P to K Kt 4, 36. K to B 1, 37. K to B 5, 38. K to B 6, 39. R to K sq, 40. R to K R sq, 41. R to R 5, 42. K to Kt 6, 43. R to B 5, 44. R to B 7, 45. R to B 8 ch, 46. B takes R ch, 47. K to Kt 7, 48. K takes P, 49. K to R 7, 50. P to Kt 5, 51. P to Kt 6, 52. K to K R 8.
(G. W. FARROW, Hull.) BLACK: 1. P to K 4, 2. P takes P, 3. P to Q 4, 4. Q to R 5 ch, 5. Kt to K 2, 6. Kt to Q B 3, 7. Q to R 4, 8. P to Kt 4, 9. P to K R 3, 10. P to Kt 5, 11. P takes B, 12. P to B 3, 13. P takes Kt, 14. R to R 2, 15. B to Q Kt 2, 16. Q to B 2, 17. B to Kt 2, 18. B takes B, 19. R to Kt 2, 20. Castles, 21. Q R to K B sq, 22. K to Kt sq, 23. Q takes Q, 24. Q R to Kt sq, 25. P to B 4, 26. R to Kt 5, 27. R takes R, 28. B takes Kt, 29. R to Kt 4, 30. R takes R P, 31. K to Kt 2, 32. R to Kt 4, 33. R to Kt 2, 34. Kt to B 4, 35. Kt to R 5 ch, 36. Kt to Kt 3 ch, 37. Kt to K 2 ch, 38. R to R 2, 39. K to B sq, 40. K to Q sq, 41. Kt to Kt sq ch, 42. R to K 2, 43. K to K sq, 44. K to Q sq, 45. R to K sq, 46. K takes R, 47. Kt to K 2, 48. R to B sq, 49. Kt to Kt sq, 50. K to K 2, 51. Kt to K B 4, 52. Resigns.

GAME 258th.

THE INTERNATIONAL CORRESPONDENCE TOURNEY.

A game recently won by Mr. Nash, of St. Neots, Eng.

- WHITE.—(Mr. Nash.) (British): 1. P to K 4, 2. Kt to K B 3, 3. Kt to Q B 3, 4. B to Kt 5, 5. Kt takes K P, 6. Kt to Q 3, 7. Castles, 8. Kt takes K.
BLACK.—(Mr. Romney.) (American): 1. P to K 4, 2. Kt to Q B 3, 3. Kt to K B 3, 4. B to B 4, 5. Q to K 7, 6. Kt takes P, 7. Castles, 8. Resigns out.

NOTES.

(a) On account of the loss of a piece which hangs lately follows.

SOLUTIONS.

Solution of Problem No. 170.

- WHITE: 1. B to Kt 2, 2. R to Q 3 ch, 3. K takes Kt, 4. Q mates.
BLACK: 1. B to R 2, 2. K takes R.
There are other defenses.

Solution of Problem for Young Players, No. 165.

- WHITE: 1. P to Q R 6 ch, 2. Q to Q R 2 ch, 3. Q takes P ch, 4. Q mates.
BLACK: 1. K takes P, 2. K to Kt 3, 3. K to Q R 2.

PROBLEMS FOR YOUNG PLAYERS NO. 166.

- WHITE: K at K 7, B at K Kt 7, B at Q B 5, Kt at Q 2, Pawns at Q 7, K B at Q B 3, Q Kt and Q R 3.
BLACK: K at Q B 4, Q at K B 4, B at K R 8, B at Q B sq, Pawns at K R 4, Q R 5 and Q Kt 3.
White to play and mate in two moves.

\$10 to \$1000 invested in Wall St. Stocks makes fortunes every month. Book sent free explaining everything. Address BAXTER & CO., Bankers, 17 Wall St., N. Y.

JOHN McARTHUR & SON, OIL, LEAD, PAINT, COLOR & VARNISH MERCHANTS IMPORTERS OF English and Belgian Window Glass, Rolled, Rough and Polished Plate Glass, Colored, Plain and Stained Enamelled Sheet Glass. PAINTERS & ARTISTS' MATERIALS, BRUSHES, CHEMICALS, DYE, STUFS, NAVAL STORES, &c. 310, 312, 314 & 316 ST. PAUL ST., AND 253, 255 & 257 COMMISSIONERS ST. MONTREAL. 15-24-52-268.

25 CARDS, 25 styles, 10 cts., or 20 Chromo Cards, 20 cts., with name. J. B. HUSTED, NASSAU, N. Y. E. N. FRESHMAN & BROS., Advertising Agents, 156 W. Fourth St., CINCINNATI, O., Are authorized to receive advertisements for this paper. Estimates furnished free upon application. Send two stamps for our Advertisers' Manual. 16-25-46

OTTAWA RIVER NAV. CO.'S STEAMERS

BETWEEN MONTREAL AND OTTAWA. Passengers by Day boat leave Montreal every morning at 7.15 a.m. for Lachine to connect with steamers for Ottawa. Baggage checked through. Daily Excursions over Lachine Rapids, 50c. for round trip; leave by 5 p.m. train. Daily Excursion for Carillon; fare for round trip, \$1.25. Tickets at 13 Bonaventure street, Windsor Hotel, St. Lawrence Hall, and at Railway Station, Montreal, and at Office. R. W. SHEPHERD, President. 17-17-33-259

HATS! NOBBY STYLES, constantly on hand and receiving from best English and American Houses. JOB C. THOMPSON & CO., 17-17-33-248 416 NOTRE DAME STREET.

Bank of Montreal.

NOTICE IS HEREBY GIVEN that a Dividend of SIX PER CENT. upon the paid-up Capital Stock of this Institution has been declared for the current half-year, and that the same will be payable at its Banking House, in this city, on and after SATURDAY, THE FIRST DAY OF JUNE NEXT. The Transfer Books will be closed from the 17th to the 31st May next, both days inclusive. The ANNUAL GENERAL MEETING of the Shareholders will be held at the Bank ON MONDAY, THE THIRD DAY OF JUNE NEXT. The Chair to be taken at ONE o'clock. R. B. ANGUS, General Manager. Montreal, 16th April, 1878. 17-17-33-47

British American BANK NOTE COMPANY, MONTREAL. Incorporated by Letters Patent. Capital \$100,000. General Engravers & Printers. Bank Notes, Bonds, Postage, Bill & Law Stamps, Revenue Stamps, Bills of Exchange, DRAFTS, DEPOSIT RECEIPTS, Promissory Notes, &c., &c., Executed in the Best Style of Steel Plate Engraving. Portraits a Specialty. G. B. BURLAND, President & Manager.

THE WONDER OF THE AGE IS THE CHAMPION WASHER. Try it, and you will never be without it. DRINKS! CHAMPION WASHER. PRICE ONLY \$6.00. It is the cheapest and most perfect Washer in the market. Is easily handled, does not wear the clothes, or break buttons. Never gets out of order, and fits any tub. Is selling by thousands. Agents wanted. Manufactured by STOCKTON, ROSSITER & CO., 122 King Street West Toronto. All kinds of Wringers on hand. Montreal branch office, 17 1/2 Beaver Hall, S. S. Baker, Manager.

DR. WILLIAM GRAY'S SPECIFIC MEDICINE. The Great English Remedy will promptly and radically cure any and every case of Nervous Debility and Weakness, result of indiscretions, excesses or overwork of the brain and nervous system; is perfectly harmless, acts like magic, and has been extensively used for over thirty years after taking with great success. Price: \$1 per package, or six packages for \$5, by mail free of postage. Full particulars in our pamphlet, which we desire to send free by mail to every one. Address: WM. GRAY & CO., WINDSOR, ONTARIO, CANADA. Sold in Montreal by all Druggists, and by all Druggists in Canada. 167-52-284

JOHN DOUGALL & SON, 218 and 220, St. James Street, Montreal. Electrotyping and Job Printing, Chromatic and Plain. 25 Elegant Mixed Cards & Names, 15c. No. Analogue or Yankee match. Agents' outfit, 15c. Catalogue and sample, 3c. 5 Chromos, 10c. All post paid. NATIONAL CARD HOUSE, Ingleside, Ont. 15-17-33-265

TO LET. One of those comfortable medium-sized STONE HOUSES, No. 39, Lorne Avenue. Rent low to a good tenant. ALSO several rooms, suitable for WORKSHOPS or OFFICES. Corner of Craig and Bleury Streets. Apply to G. B. BURLAND, Burland-Desbarats Lith. Co., 5 & 7 Bleury Street.

THE COOK'S FRIEND

BAKING POWDER Has become a HOUSEHOLD WORD in the land, and is a HOUSEHOLD NECESSITY in every family where Economy and Health are studied. It is used for raising all kinds of Bread, Rolls, Pancakes, Griddle Cakes, &c., &c., and a small quantity used in Pie Crust, Puddings, or other Pastry, will save half the usual shortening, and make the food more digestible. THE COOK'S FRIEND. SAVE TIME, IT SAVES TEMPER, IT SAVES MONEY. For sale by storekeepers throughout the Dominion and wholesale by the manufacturer. W. D. MCLAREN, UNION MILLS, 15-17-52-249 55 College Street.

NOTICE TO THE PUBLIC. CANADIAN MECHANICS' MAGAZINE AND PATENT OFFICE RECORD. This VALUABLE MONTHLY MAGAZINE has been much improved during the past year, and now embodies within its pages the most Recent and Useful information published connected with Science and the different branches of Mechanical Trades, selected with particular care, for the information and instruction of Mechanics in Canada. A portion of its columns is devoted to instructive reading, suitable for the younger members of a family, of either sex, under the title of the

ILLUSTRATED FAMILY FRIEND, SUCH AS FLORAL CULTURE, NATURAL HISTORY, POPULAR GAMES AND AMUSEMENTS, LADIES' FANCY AND NEEDLE WORK, AND SHORT PLEASING STORIES. ALSO SELECTED NEW MUSIC, DOMESTIC RECEIPTS, &c. The Canadian Mechanics' Magazine, with the addition of the Illustrated Family Friend AND PATENT OFFICE RECORD. Contains 16 full pages of Superior Illustrations and about 125 diagrams of all the Patents issued each month in Canada; it is a work that merits the support of every Mechanic in the Dominion, whose motto should always be "SUPPORT HOME INDUSTRY." Price, only \$2.00 per annum. BURLAND-DESBARATS LITH. CO., PROPRIETORS AND PUBLISHERS, 5 and 7 BLEURY STREET, MONTREAL. F. N. BOXER, Architect, 187-17-33-47

CHEAPEST AND BEST. DAILY WITNESS, MONTREAL WITNESS, WEEKLY WITNESS, CANADIAN MESSENGER, NEW DOMINION, MONTHLY. JOHN DOUGALL & SON, 218 and 220, St. James Street, Montreal. Electrotyping and Job Printing, Chromatic and Plain. 25 Elegant Mixed Cards & Names, 15c. No. Analogue or Yankee match. Agents' outfit, 15c. Catalogue and sample, 3c. 5 Chromos, 10c. All post paid. NATIONAL CARD HOUSE, Ingleside, Ont. 15-17-33-265