

Miners Wanted

TO CHEW !!

PAY ROLL

Plug Tobacco

WANTED.

At the several collieries of the Dominion coal co. Limited, skilled coal miners and mine laborers.

Apply on the works Or by letter

Dominion Coal Company, Ltd

Genuine Garlock Packings

FOR ALL PURPOSES.

**Pipe and Boiler Coverings,
ENGINEERS SUPPLIES.**

also

"Tauril" High Pressure Jointing
the Best Sheet Packing yet
Produced.

THE GARLOCK PACKING CO.
HAMILTON, ONTARIO.

Used by Collieries in Lancashire, Staffordshire
& Yorkshire

'XTERRA'

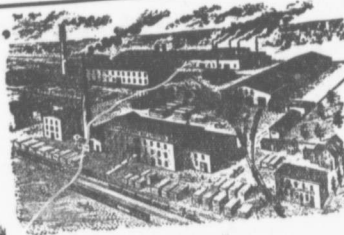
COLLIERY LAMP OIL.

For Marquet, Muesle Deflector or Closed Lamp

LOW PRICE

PURE WHITE FLAME
E. WOLASTON, Dutton St MANCHESTER

Sole Representatives for Canada, AUSTEN BROS.,
Halifax, N. S.



—MANUFACTURERS OF—

RAILWAY
STREET and
MINING

CARS,

CAR WHEELS
FORGINGS &
CASTINGS

Church Pews,
Fittings for Stores, Schools, &
A SPECIALTY

Large Stocks of Foreign and Domestic Lumber on Sale.

Rhodes,
Curry & co., Ltd.

BUILDING MATERIALS
GENERAL

Branch

ROBBIE STREET,
HALIFAX, N. S.

AMHERST, N. S.

INTERCOLONIAL RAILWAY

On and after SUNDAY, OCT. 13 1907 trains
run daily, Sunday excepted, as follows:—

—TRAINS LEAVE STELLARTON—		
No 144 Mixed for Hopewell	8.55
No 79 Mixed for Trenton	8.30
78 Mixed for Hopewell	8.55
18 Express for Halifax and St. John	7.40
21 Mixed for Pictou Landing	7.40
21 Mixed for Pictou	7.45
62 Mixed for Mulgrave	8.30
25 Mixed for Sydney	11.15
19 Express for Pictou	13.55
25 Mixed for Truro	15.55
150 Mixed for New Glasgow	16.50
25 Express for the Sydneys	15.30
25 Express for Halifax and Montreal	15.35
140 Mixed for Pictou	16.45
181 Mixed for Pictou Landing	18.10
25 Mixed for St. John	19.50
25 Mixed for New Glasgow	19.50
86 Express for Halifax and St. John	21.50
17 Express for New Glasgow	21.50
86 Express for Pictou	21.55

—TRAINS ARRIVE AT STELLARTON

79 Mixed from Hopewell	8.50
78 Mixed from Trenton	8.55
61 Express from Pictou	7.30
18 Express from New Glasgow	7.35
18 Express from Hopewell	8.00
21 Mixed from Truro	10.55
25 Mixed from New Glasgow	12.55
25 Mixed from Pictou	13.35
27 Mixed from Mulgrave	11.00
19 Express from Halifax and St. John	13.15
19 Express from Pictou	16.40
129 Mixed from Pictou	15.50
85 Express from Halifax and St. John	18.10
25 Express from Sydney	18.45
25 Mixed from Pictou Landing	19.35
77 Mixed from Hopewell	19.40
25 Mixed from Pictou	19.40
86 Express from the Sydneys	21.45
86 Express from New Glasgow	21.45
17 Express from St. John and Halifax	21.45

All trains are run by Atlantic Standard time Twenty four
clock is mid-night, Moncton, N. B. OCT 13th, 1907
Buffet sleeping cars on trains 25 and 26 between Halifax and Mulgrave
and Sydney Dining cars between Halifax and Mulgrave
and Buffet Parlor Car on trains 18 and 20 between Halifax and
Sydney Dining cars between Mulgrave and South River