

length, 1.05 mm. Clypeus, labrum and thoracic shield a tawny olive colour; head a seal brown; body a sordid straw colour. The tubercles proportionately smaller and the hairs longer than in the full grown larva.

Larva (Fig. 1, b), (last stage) length, 2 cm.; head, diameter, .32 mm. body, diameter, 3.7 mm. Head and thoracic shield black; scattering hairs occur on the head. Dorsal surface of body pale green with black tubercles. There are four tubercles on each side of the third and fourth segments, three in a row extending ventro cephalad and the fourth caudad of the last one in the row. The dorsum of the remaining segments i

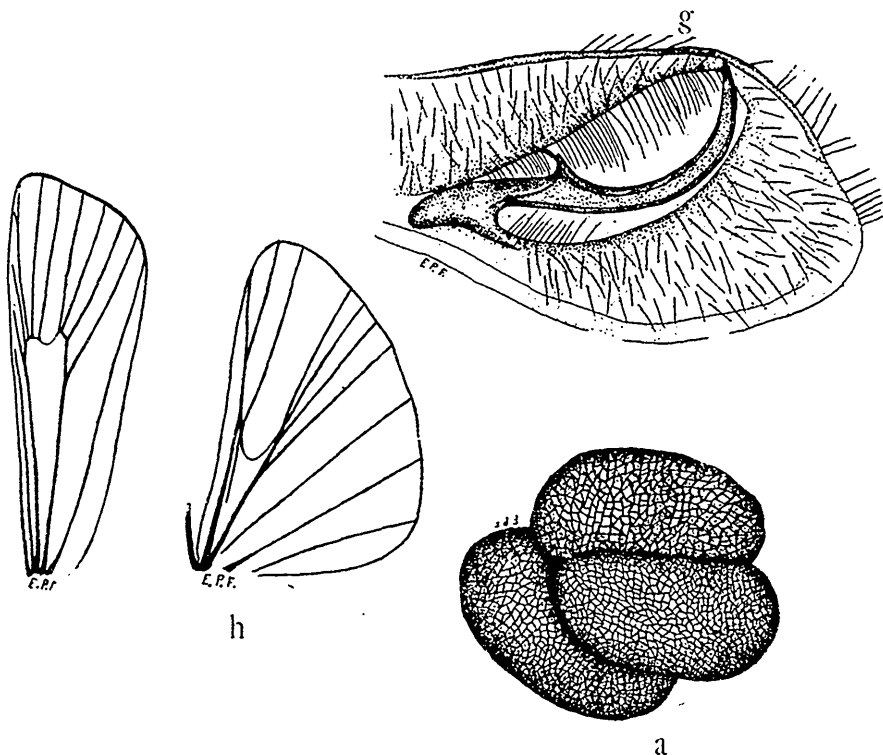


FIG. 2.

Nomophila noctuella: a, eggs, $\times 40$; g, male genitalia (mesal aspect of right harpe and clasper), $\times 80$; b, venation of wings, female, $\times 4$.

divided by a slight transverse constriction into a cephalic and caudal part; the cephalic part of each segment bears three tubercles in a row, extending ventrad and forming with the tubercles of the third and fourth