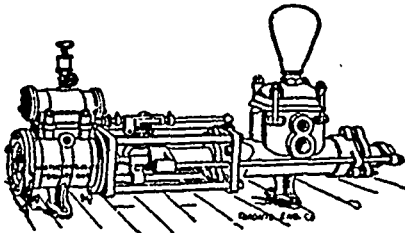


Waterous Engine Works Co.,

WINNIPEG, MAN.

Engines and Boilers,
Saw Mills.



Saw Mill Machinery,
Northey's Steam Pumps,
Grain Choppers,

PORTER & CO.,

DIRECT IMPORTERS OF

Crockery.

GLASSWARE, CHINA,

Silverware, Cutlery, Lamps,
Fancy Goods, Etc.

330 Main St, Winnipeg

Established 1800.

Incorporated 1895.

"Crescent"

Steel Enamelled Ware

Tinware of every Description
Manufactured by

The Thos. Davidson Mfg. Co Ltd.

MONTREAL

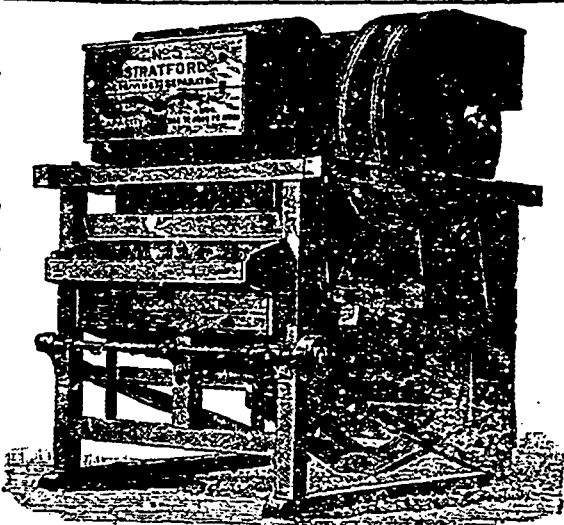
Merrick, Anderson & Co. Agents,
Winnipeg.

STUART & HARPER

AGENTS FOR

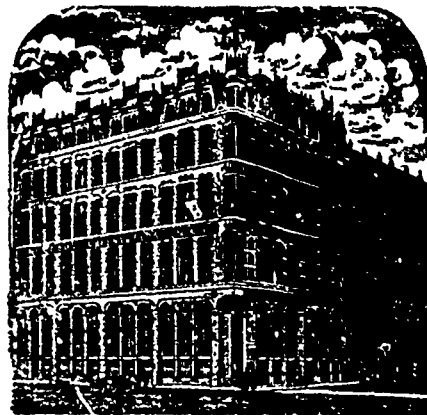
Stratford Mill Building Co.
Flour Mill and Elevator Machinery
Dustless Warehouse and Elevator
Separators
Dodge Wood Pulleys
New and Second-hand Machinery
of all kinds.

758 to 764 Main Street,
Winnipeg.



S. Greenshields Son & Co.

MONTREAL AND VANCOUVER, B.C.



We are offering for Spring Delivery the
following special lines:

Crums' Prints. Tokio Pongees.
Priestley's Waterwitch Serges, Cravenettes,
Coutilles, Lustres & other Mohair Effects.
Harrison's Brussel's Carpets.

Also a very large range of COTTON GOODS
Samples with C. J. REDMOND, Room 18,
McIntyre Block, Winnipeg.

McMASTER & CO

—WHOLESALE—

WOOLENS, TAILOR'S TRIMMINGS

CARPETS
AND GENERAL DRY GOODS,

Represented by
J. J. THORLEY TORONTO, ONT.

JAS. McCREADY & CO.,

WHOLESALE

Boot and Shoe Manufacturers,
MONTREAL.

W. WILLIAMS, AGENT.
SAMPLE ROOM—Room M, McIntyre Block,
MAIN STREET, WINNIPEG.

M. and L. Samuel Benjamin & Co.,

26, 28, 30 FRONT STREET, WEST.
TORONTO

* Shelf and Heavy Hardware,
* Metals, Tin Plate, etc.
* Lamp Goods and Gas Fixtures.
Plumbers and Steam Fitters' Supplies

Special attention given to import
and export trade.
English House: Samuel Sons & Benjamin
164 Fenchurch St., London, E.C.

Cigars

Made in your own Country.

HISPANIA, RED CROSS, KHEWIVE

Try these Brands. They are Unsurpassed.

—BRYAN & LEE, Winnipeg.

Andrew Allan, President. John McKechnie, St pt
F. H. Brydges, Vice-President. W. R. Allan, Sec.-Treas

THE VULCAN IRON COMPANY, OF MONTREAL LIMITED

MILL ROLLS GROUND & CORRUGATED.
Architectural Iron Work.

ENGINE AND BOILER WORKS,
GENERAL BLACKSMITHING.

BRIDGE BUILDING A SPECIALTY.
TENDERS SOLICITED.

POINT DOUGLAS AVE., WINNIPEG.