

The

# CANADIAN MANUFACTURER

AND INDUSTRIAL WORLD

DEVOTED TO THE MANUFACTURING INTERESTS OF CANADA.

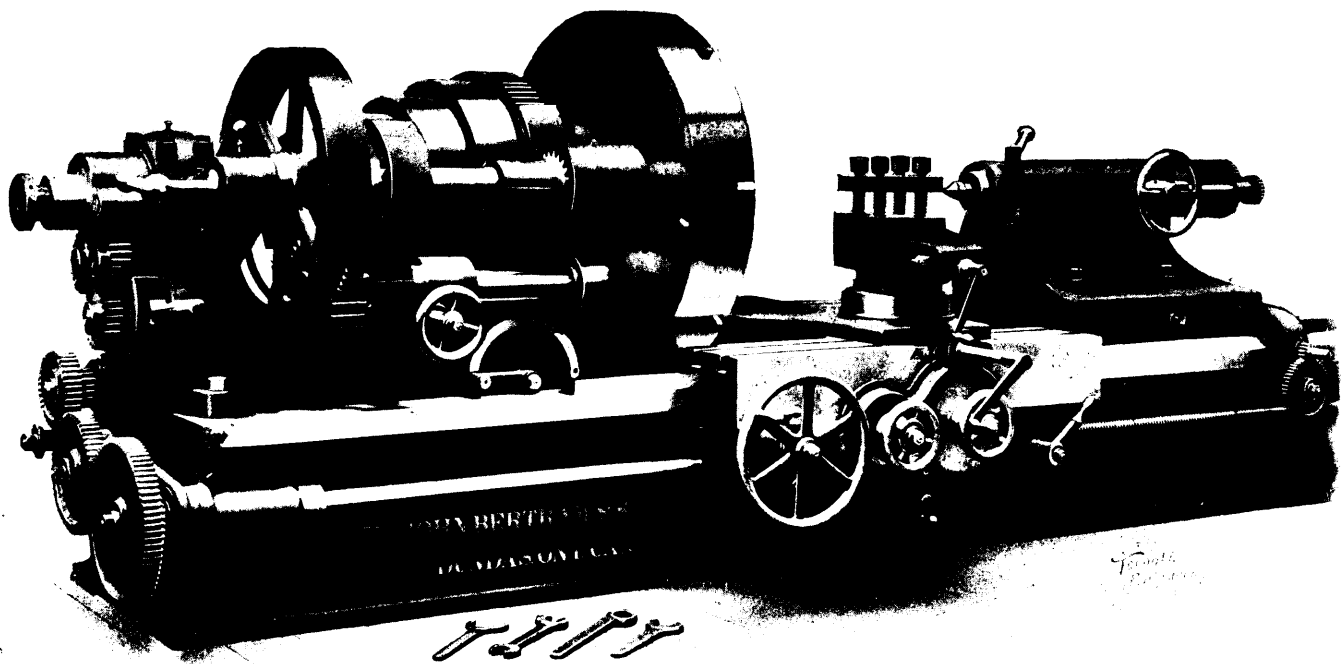
VOL. 55.

TORONTO, NOVEMBER 15, 1907.

No. 10.

## Bertram Engine Lathes

From 16-inch to 72-inch Swing



Built for the heaviest service required by modern shop methods.

Our lathes can be driven to their rated capacity without strain to the machine or the nerves of the operator.

Illustrated circulars describing our line of lathes will be sent to any address on application.

## The John Bertram & Sons Co., Limited

DUNDAS, ONTARIO, CANADA