

A NEW AIR COMPRESSOR.

The new type of air compressor here shown is made by the Chicago Pneumatic Tool Co. (Fisher Bldg. Chicago and 95 Liberty St., New York) at their Air Compressor Works, Franklin, Pa., and is designed to meet the growing demand for an efficient, simple and compact compressor furnished at a moderate price. This form of compressor is made in a variety of sizes and styles, starting with a minimum capacity of 30 cubic feet of free air

base the compressor is entirely self-contained, obviating the necessity of expert services in erecting, and reducing cost of foundation.

Air cylinder and heads are completely water jacketed, with thorough circulation of water, affording equal cooling at all points.

Steam valves on cylinders under 12 inches diameter are of plain slide type accurately scraped to seat and securely fastened to rod. Cylinders 12 inches diameter and larger are provided with

iron spring rings accurately fitted. Piston rods are of best machinery steel.

Shaft is of center crank type with exceptionally heavy crank arms, made of best open hearth steel of ample diameter, accurately finished.

Cross-head is of cast iron with adjustable shoes top and bottom.

Connecting rod is of best open hearth steel, with bronze cross-head pin boxes having wedge adjustment. Crank pin end is of Marine type lined with genuine babbitt metal.

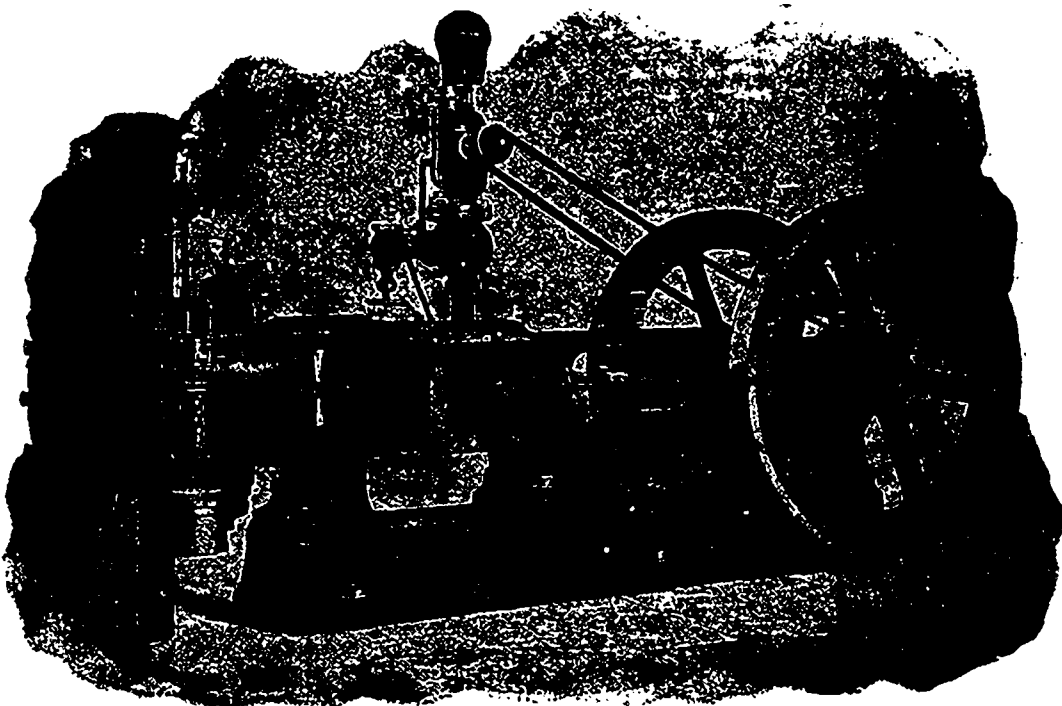
Compressor is furnished with two wheels, one on each side of compressor, turned true, and keyed to shaft, of sufficient weight to insure smooth operation.

An unloading device is provided to relieve the compressor of all load when the desired air pressure is obtained, and automatically cause it to resume delivery when the storage pressure becomes reduced.

Cylinders have provision for indicator connections.

A pressure regulating governor is provided, to automatically control the operation of the compressor in accordance with the demand for air, working in connection with a speed governor for regulating the speed of the engine.

These compressors are submitted to a working test before shipment and although designed primarily to supply compressed air power for operating pneumatic tools in railroad shops, machine shops, foundries, shipyards, and stone-yards, they are equally suitable for actuating rock drills, coal cutters and other machinery in mines, tunnels and quarries, pumping water by the air lift system and for every other purpose to which compressed air is applied.



New Type Air Compressor.

per minute, single, duplex or compound, actuated by steam, belted, chain driven, or geared to an electric motor. The frame is of box section design, with large factor of safety to withstand all strains when working at maximum load. Graceful in outline, with bored cross-head guide and provision for catching and removing drip from bearings and stuffing boxes.

Compressors having cylinders 8" in diameter and larger are furnished with or without sub-base. When furnished with

Meyer Adjustable Cut-Off Valves and gear.

Air valves are of poppet type made from high grade steel, having removable seats and guides, easily renewed or repaired and thoroughly guarded from entering cylinder in case of breakage. They are placed radially in cylinder, making them readily accessible, ensuring accurate setting, and reducing wear to a minimum.

The pistons are of solid type with cast

SHAW MACHINERY CONTRACTS.

One of the best known American dealers in new and second-hand contractors' machinery in the West is Willis Shaw, of 171 La Salle Street, Chicago. Mr. Shaw is also sales agent for the "Davenport" locomotive, Flory hoisting engines, North Penn Iron Co's. locomotive cranes and Blaisdell air compressors. He reports a continuance of good enquiries and satisfactory business. Mr. Shaw has just secured an order for eight carloads of Flory hoisting engines for the coal docks of Standard Coal Co., Milwaukee, and Two Rivers Coal Co., Two Rivers. Six Flory hoists, 100 h.p. each will be installed in the Milwaukee plant, and the Flory engines were selected in view of the satisfaction given at Es-

canaba and Green Bay docks where they are also used. The Hoisting & Conveying Machinery Co. of Chicago have the general contract, and the Flory machines are furnished by Mr. Shaw. Other Shaw contracts included the following: air compressor and rock drills for Rowley Mining Co., Buncombe, Wis.; 45-ton steam shovel, Porter Bros., Duluth, Minn.; prospecting mine hoist, J. T. Duffy, Louisville, Ky.; "Davenport" locomotive, Cole Creek Coal Co., Big Muddy, Wyo.; traction steam shovel, McDonald-McMillan Co., Winnipeg, Man.; Flory hoisting engine, Lincoln Park Commissioners, Chicago; mine drills, Antler Coal & Coke Co., Antler Siding, W. Va.; hoisting engine, Stirling Co., Barberton, Ohio; traction engine, C. C.

Provino, Grenada, Miss.; revolving and travelling derrick and quarry drills, Onaway, (Mich.) Limestone Co.; Flory hoisting engine, M. Suck, contractor, Mobile, Ala.; steam shovel, South Bend (Ind.) Electric Co.; hoisting engine, Peoria, (Ill.) Water Works Co.; 28x30 inch saw mill engine, Tremont (La.) Lumber Co.; hoisting engine, Pepper & Register, Philadelphia, and stone crusher, Bickford Bros., New Orleans.

The Convertible Car Co., Toronto, have been incorporated with a capital of \$75,000, to manufacture convertible cars, railway cars, etc. The provisional directors include R. G. Dickson, C. A. Johnson and P. H. Drayton, Toronto.