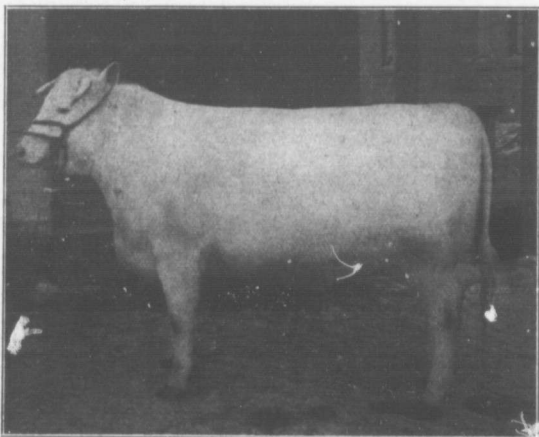


turns are reasonably satisfactory.

There is abundance of evidence to prove that the most economical, rapid and effective method of improving our farm animals is by the use of a pure-bred sire; an animal of good conformation, a true representative of the breed to which he belongs and in addition possesses those characteristics that are associated with strength, vigor and masculinity. A publication issued under

was used was \$19 per cow. In the herds where pure-bred sires had been in use less than five years the returns were \$46 each. Where a pure-bred sire had been in service more than five and less than ten years the profit was \$51, and in those herds in which a pure-bred sire had been used over ten years a profit of \$57. A profit over the cost of feed is in every case in favor of the pure-bred sire, the profit increasing in propor-



A Winter Fair Champion.

The type of steer that results from good breeding.

the direction of the American Holstein-Friesian Association claims that a good pure-bred sire used on a herd of scrub dairy cows has actually given a cash return of nearly one thousand per cent. on the original cost of the bull.

According to the farm survey made recently there is no question regarding the influence of the pure-bred sire. The profit over the cost of feed in herds where a grade sire

tion to the length of time he had been in use. The two cases mentioned of the far-reaching influences of a pure-bred sire could be multiplied many times; they all bear testimony to the rapid improvement possible by maintaining a well bred sire at the head of the herd. In actual practice the following table shows the result of six generations of grading up when a registered sire is used: