

Electric Railway Department

Rolling Stock for Three Rivers Traction Company.

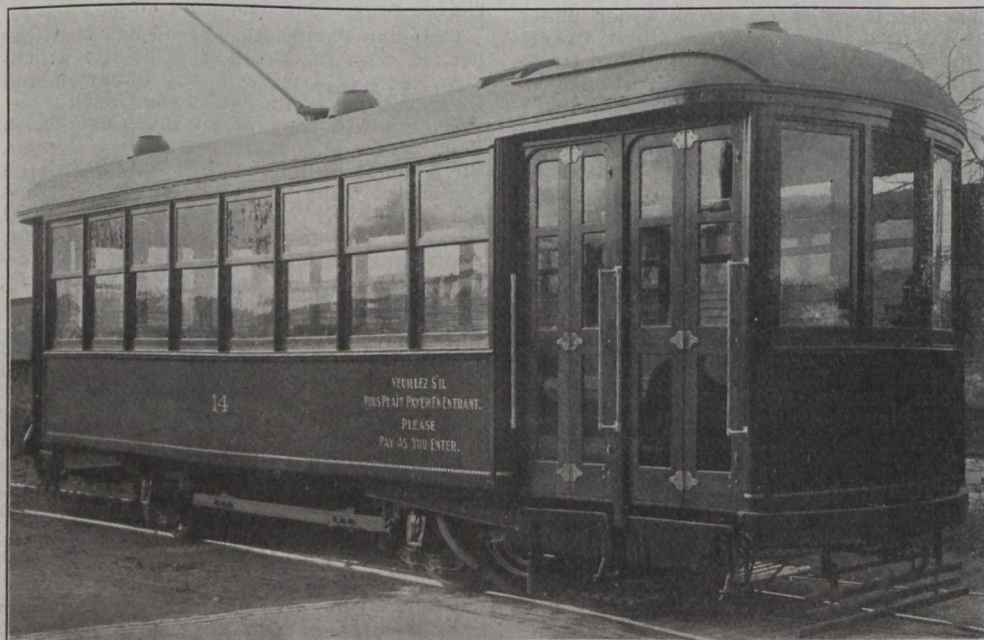
The Three Rivers Traction Co., which has built a circuit electric railway in Three Rivers, Que., and has a suburban line projected to Cap de la Madeleine, a total length of about seven miles, has received recently

ency exit door controlled by the motorman from his position in the front vestibule. There is a circular seat running around the rear vestibule which accommodates five passengers. The seats are the builder's

push buttons and buzzers, the current being procured from batteries.

The cars are heated with cross seat heaters with ten heaters per car. The cars are mounted on radiax trucks, 12 ft. wheel base, with 33 in. cast iron wheels and 4½ in. hot rolled axles. Each car is equipped with two Westinghouse 121-B-2 motors, with 1 K-10 controller, Westinghouse schedule S-M-1 straight air brake equipment. H-B life guards, and the Trolley Supply Co.'s Ideal trolley catcher. The bodies are painted olive green with gold lettering and striping.

The combination sweeper and tower car is the builder's standard single truck sweeper with a tower built on one end. The body or cab is of wood construction, built on a heavy wood underframe, which is reinforced with heavy steel plates. The roof is of the turtle back type, supported on steel carlines. The interior of the body is in ash, natural finish. The truck is the builder's standard design, which is extra heavy. The brooms and broom operating machinery are of the builder's standard construction. The brooms are mounted on a heavy shaft, which runs in bearings which slide up and down in heavy malleable iron guides. They are driven by a heavy chain and sprocket drive from a main driving shaft, which is directly connected to the motor by a gear and pinion drive, having the same gear ratio as the truck motors. Each set of brooms can be cut in or out by clutches on the main driving shaft. The brooms are raised and lowered by hand winches in the cab, a separate



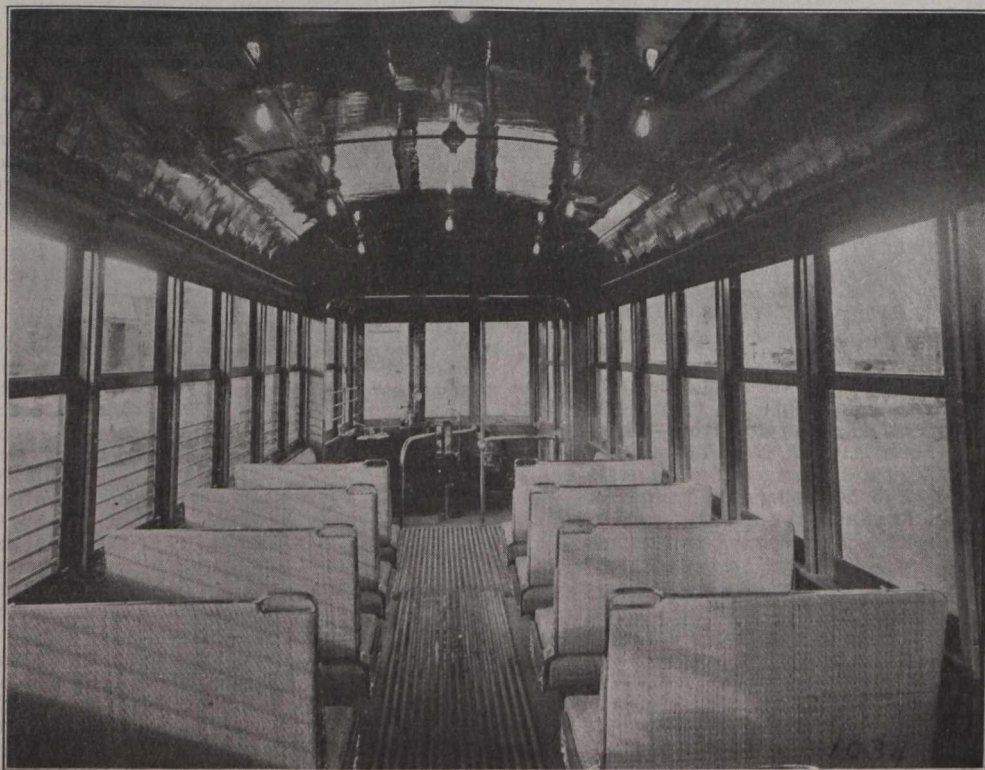
Three Rivers Traction Co.'s Passenger Car.

six single end, single truck, one man, near side cars, and a single truck combination sweeper and tower car, from the Ottawa Car Manufacturing Co. The general dimensions of the passenger cars are as follows:

Length of body	21 ft.
Length of front vestibule	6 ft. 2 ins.
Length of rear vestibule	4 ft.
Length over all	32 ft. 2 ins.
Width over all	8 ft. 6 ins.

The car bodies are of semi-convertible type, wood construction, built specially for one man, near side operation, and single end control. The sides are straight and sheeted vertically with narrow tongue and groove poplar sheeting. There are eight double sash windows on each side of the body. Top sash are made stationary and bottom sash made to raise to open. The roof is of arch type, with ventilators in each side, also one in front vestibule. The underframe is of composite construction, having wood sills reinforced with steel plates, which are rivetted together to form a complete steel frame. The flooring is ¾ in. thick tongue and groove, hard yellow pine covered, with hardwood floor matting laid lengthwise in the aisle. The interior trimming is red cherry. The front vestibule is made extra long and step opening extra wide, so that entrance and exit can be made by same. Each opening has an individual folding door and step of the builder's standard construction, so arranged that when the motorman opens the door, the step drops, and when he closes the door the step folds up. The doors are arranged so that the motorman can operate them singly or both together.

The front vestibule is equipped with brass p.a.y.e. rails, folding curtain behind motorman, and the Coleman Fare Box Co.'s no. 4 type of stationary fare box. The rear vestibule is circular in shape, with an emerg-



Three Rivers Traction Co.'s Passenger Car.

standard stationary type, covered with twill weave rattan and with brass grab handle on back. The curtains are pantasote mounted on metal rollers. The cars are also equipped with the builder's standard

winch being provided for each set of brooms. The tower has a working platform about 6 ft. by 5 ft. wide, with a folding fence all around it. The tower is raised and lowered by a heavy winch inside the