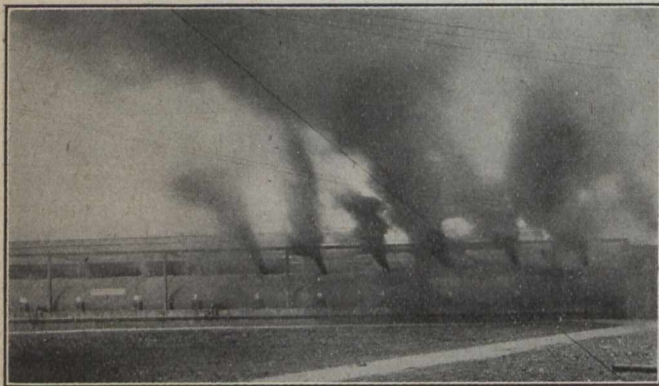


Steel Gallery in which Coal Dust experiments are made.



An explosion of coal dust in the steel gallery.

A few minutes later, while volumes of dense brown fumes were still billowing from the gallery, a rescue party, equipped with various types of breathing apparatus, entered the gallery and effected the rescue of two dummies. Several squads of rescuers then performed a series of evolutions before the President.

One interesting experiment was conducted earlier in the morning. Mr. G. A. Burrell, an officer of the Bureau, entered a glass box, the atmosphere of which contained 0.25 per cent. of carbon monoxide (white damp). He took with him three canaries. While the gas had no effect upon the experimenter, all three of the birds began at once to show signs of distress. Af-

ter a few minutes they collapsed. Mr. Burrell stayed in the box for some minutes further. Later the birds were all revived by the application of oxygen.

At 11.30 a.m., President Taft presented the trophies. Speeches were made by Governor Tener, Hon. Mr. Fisher, and Miss Mabel Boardman. Miss Boardman represented the American Red Cross Society.

To the visitor it was a slight shock to hear Governor Tener declare that all the anthracite coal in the world came from Pennsylvania. Similarly it was a source of surprise when the Secretary of the Interior asserted that the United States led the world in mine safety work. This is so beside the mark as to need no comment.

* * * *

Too much praise cannot be bestowed on Director Holmes and his efficient lieutenants Messrs. Paul, Shields, Hall, Feehan, and Clement. The limited time at their disposal made it obligatory to crowd into one day and a half, events that could easily have been spread over a week. It was necessary, also, for the sake of impressing gatherings that numbered from two thousand to fifteen thousand, to make the demonstration spectacular. And it was spectacular. The whole effect was impressive, educative, and inspiring.

The JOURNAL hopes that when our own Mines Branch Testing Station is completed some such public exhibition can be arranged.



First Aid to the injured—bandaging for injury to jaw.



Interior rescue room Bureau of Mines Station.