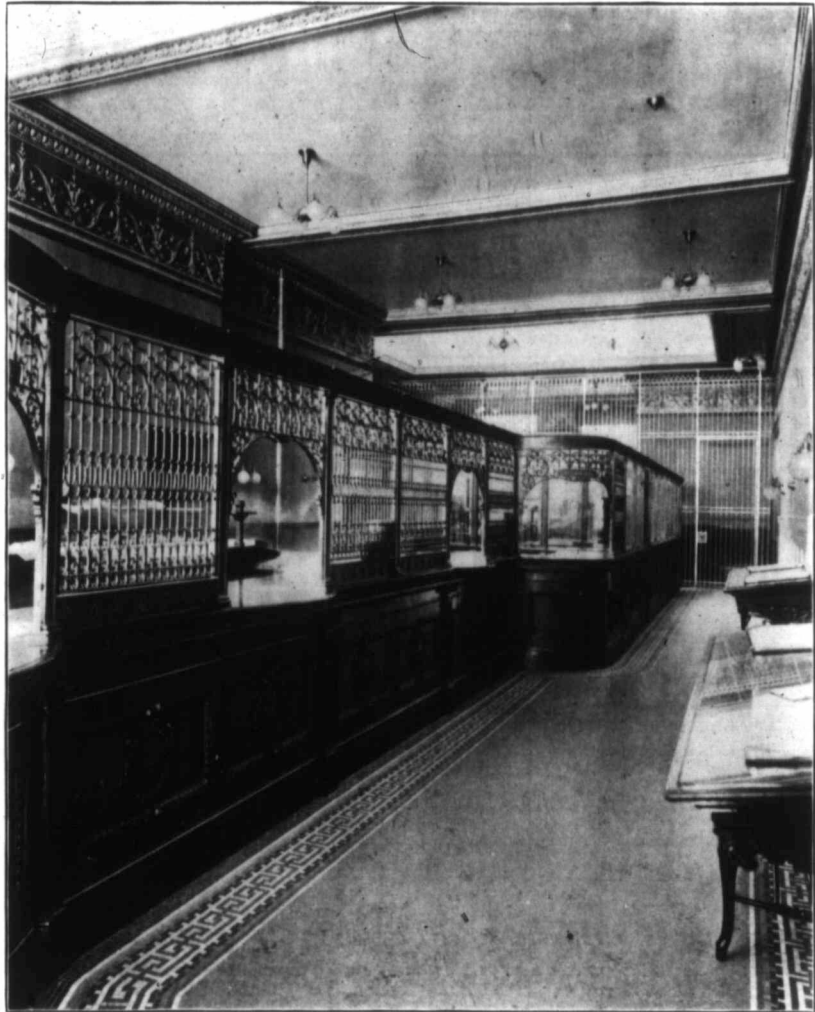


2-4 *Ornamental Iron Department.*



403.

SHOWING OFFICE RAILING, METAL COUNTER FRONT, AND SAFETY DEPOSIT VAULT GUARD IN THE BACKGROUND: THESE WERE ALL FINISHED IN ELECTRO BRONZE, AND WITH ALL THE INTERIOR IRON WORK, INCLUDING IRON STAIRS, WERE MADE BY US AND ERECTED IN THE NATIONAL TRUSTS CO.'S BUILDING, TORONTO.