

# Intramural Notice

Entries for hockey and bowling are now being received at the Athletics Department. The deadline for entries will be Friday, Oct. 23rd.

## INTRAMURAL HOCKEY ENTRIES

Entries to be registered at the athletics department by Friday, October 23rd.

### FEE

A registration deposit of \$15.00 per team will be charged. This will be refunded at the end of the season unless the team has failed to meet their obligations.

### ELIGIBILITY

Students are eligible to play for their faculty within their own class. Classes or faculties not having sufficient interest for one or more teams may be combined with other classes subject to the approval of the Athletics Department.

Minimum on roster (15) fifteen.  
Minimum at any one match (11) eleven.  
Maximum dressed at one match (18) eighteen.

### DEFAULTS

A team having less than eleven players at fifteen (15) minutes after scheduled game time on more than one occasion will be suspended from further play and lose their registration deposit.

### INTRAMURAL BOWLING ENTRIES

Entries to be registered at the Athletics Office by Friday, October 23rd. Please signify the type of bowling you wish, (candlepins, five pins, duck pins).

### FEE

A registration deposit of \$5.00 per team will be charged. This will be refunded at the end of the season

unless the team has failed to meet their obligations.

### ELIGIBILITY

Students are eligible to play for their faculty within their own class. Classes or faculties not having sufficient interest for one or more teams may be combined with other classes subject to the approval of the Athletic Department.

### TEAM COMPLEMENT

Teams must have at least eight players on roster and must have at least five in attendance for each string.

### DEFAULTS

A team having less than five players on more than one scheduled date will be suspended from further play and forfeit their deposit.

## CHARGE PLATES

(Continued from Page 1)

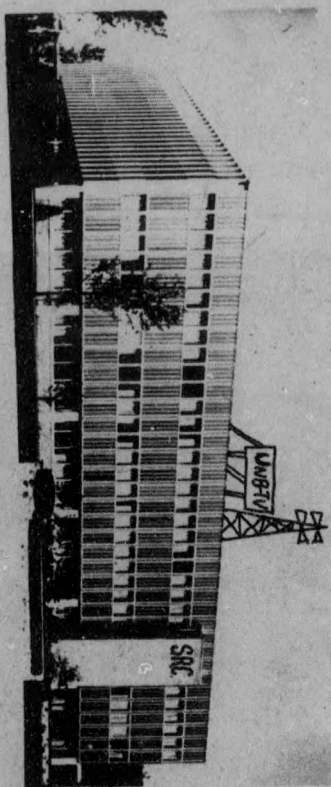
not to replace the present mode of meal cards) and perhaps in the Business Office.

Students leaving the university will be required to return their I.D. cards, unless the cards have expired. The cards will be effective for one year. If one is lost, the fine for replacement will be \$5.

The possibility of these cards replacing the present type of SRC card as student identification for student functions and discounts was mentioned. It was noted that the cost of establishing this card system would have been disproportionately large for the SRC on its own, but now there was no reason why the cards could not be used.

In any case we need not worry much. The cards will be used little this year, if at all.

ARCHITECT'S DESIGN FOR NEW S.U.B.



## PAUL BURDEN

Business Equipment  
Stationery  
Drafting Supplies  
Typewriter Sales,  
Rentals, Repairs  
Stenorette Dictating  
Machines

95 York 475-6639

## What do you want in a Company after graduation?

Graduates who've been out a few years say the important things to look for in choosing a job are good training, an unrestricted chance to grow in a solid, recognized company, income, early responsibility and a stimulating environment where intelligence and enthusiasm are recognized. The points are not always in that order, but these are the main ones. What, then, can Proctor & Gamble offer you?

1. An outstanding record of individualized, on-the-job training.
2. Responsibilities and promotion based on a man's ability - not seniority.
3. A growth company which controls 30%-65% of all the major product markets in which it competes; at least one of our brands is in 95% of all Canadian households.
4. Among other benefits, highly competitive salaries and profit sharing.

Obviously, you need to know facts before making an intelligent choice of your career. We'd like to tell you more about us. Descriptive brochures are available at your Placement Office and company representatives will visit for interviews on

### MONDAY, NOVEMBER 2, 1964

for positions in

ADVERTISING, BUYING, FINANCE,  
SALES MANAGEMENT AND TRANSPORTATION

## PROCTOR & GAMBLE

REPRESENTATIVES OF

THE

## International Nickel Company

OF CANADA LIMITED

Will visit the University to discuss career opportunities with graduating and post graduate students in

### ENGINEERING -

- CHEMICAL
- ELECTRICAL
- MECHANICAL
- CIVIL

### and CHEMISTRY

on **OCTOBER 27 and 28**

Also interviews will be held with students in

### GEOLOGY

for Summer Employment - 3rd, 4th and post-graduate years

for Regular Employment - graduating and post-graduate students

on **OCTOBER 28**

We invite you to arrange an interview through the University Placement Office

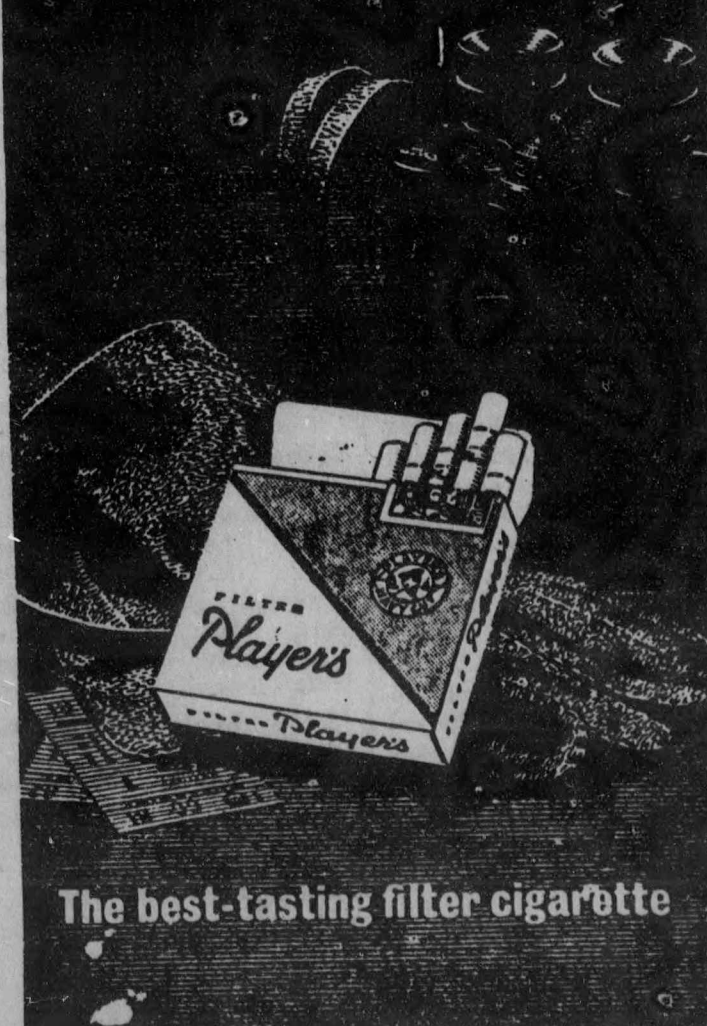
THE

## International Nickel Company

OF CANADA LIMITED

COPPER CLIFF, ONTARIO

# FILTER Player's



The best-tasting filter cigarette