

which is scarcely probable—we could not suggest a better remedy than that given for the preceding species, namely, hand picking.

THE GRAPE SEED INSECT. (*Isosoma Vitis*, Saunders.)

This insect, which was fully described in the report of the Entomological Society for 1870, has not, as far as we have been able to ascertain, affected the grape to any extent in Canada during the past year. It seems, however, to be much more widely distributed than we at first supposed. During the latter part of August, we spent a few days at Dubuque, Iowa, and while there paid a visit to the market, where there were offered for sale large quantities of a species of wild grape, which was fully ripe at that early period in the season, and which, we were told, was much used for wine making. On opening the seeds of these grapes we found a large proportion inhabited by the larvæ of this insect, a small, fat white grub. See figure 6, where it is shown much magnified. An outline of the little creature of the natural size is given below. The larvæ at that time were more than two-thirds grown.

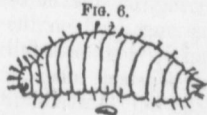
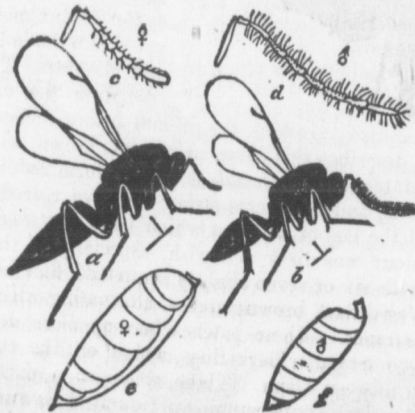


FIG. 6.

For the benefit of those who may not have access to the report for 1870, we give a figure also of a perfect fly, almost identical in appearance with that from which this larva is produced, and well serves the purpose of illustrating

FIG. 7.



it. See figure 7. *a* Represents the female; *c* and *e*, her antennæ and abdomen; *b*, *d*, and *f* give similar details of the male. The larva lives within the seed, and consumes the kernel during the summer; undergoes its change to chrysalis also within the seed, and eats its way out of it in the early part of the summer following, when in the perfect or winged state.

No. 20. A CUTWORM. (*Agrotis*—?)

This destructive pest, which is referred to at length in this report, when treating of the insects affecting the strawberry, has also proved very destructive to the vine. For details of the history and habits of this insect, the reader is referred to No. 7, Injurious to the strawberry.

1. The St
- (And
2. The Wh
- Kn
3. A Stray
- frag
4. A secon
- tema
5. A third
- nia f

Fortun
cultivated
times prov
to strawbe
may meet v
an unmixe
secure a g
more or le
organs in o
of insects,
them where
labour is re

THE

This is
the strawbe
this fruit a
who first ca
few specime
a large pro
borer is a s
eats irregul
plant, causi
shoots.