

TRANSPORTATION FACILITIES

FROM the standpoint of railway accommodation, St. Thomas offers absolutely unequalled facilities for the manufacturer. The five steam railroads cater for passenger and freight business, and some of the fastest trains in America, including the Chicago-New York limited trains of the New York Central lines, run through the Railway City, carrying the business man at a mile-a-minute rate to the commercial centres of Canada and the United States over night. Up-to-the-minute equipment, competition and excellent management have reduced to a minimum the possibility of danger to railway employees and patrons. There are fifty-six passenger trains which stop at St. Thomas every twenty-four hours, and an average of about eighty-five freight trains.

The electrification of the London and Port Stanley Railway, and also the London and Lake Erie Railway and Transportation Company, afford electric service from St. Thomas to Port Stanley, and quick communication between St. Thomas and a section of rich farming district.

From Port Stanley there is a regular steamship service for passengers to Cleveland, which is just across the lake. Large boats of the Great Lakes stop at this port and ocean vessels will call there after the enlargement of the Welland Canal.

Electric radial railways, one St. Thomas to Port Burwell, east thirty miles, and another running west 115 miles to Windsor, are assured in the near future. The rapid development of the southern counties, the garden of Canada, will make St. Thomas the centre of a veritable network of radial lines.

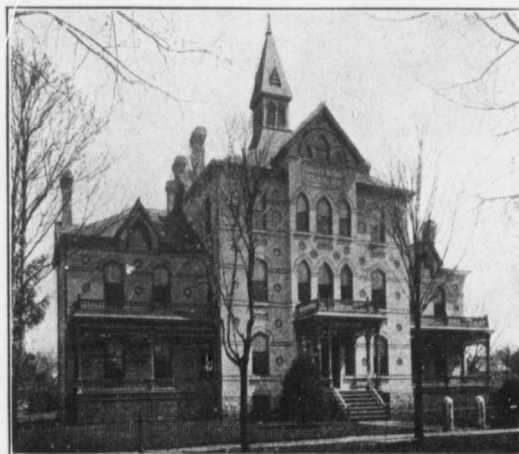
An electric street railway owned by the municipality provides good service and cheap fares throughout the city.

ST. THOMAS'S LAKE PORT

St. Thomas's lake Port (Port Stanley), opposite Cleveland, Ohio, open practically twelve months of the year, is the best harbor on the Canadian side of the lake. Its importance to the manufacturing and railway interests of St. Thomas may be gathered from the fact that during 1912, 3,580 cars of coal, steel, coke, and grain were brought into St. Thomas through this port. It is the natural point of entry into Ontario for the products of the steel and coal industries of Ohio and Pennsylvania.

The traffic entering Port Stanley averages more than 2,000 cars per month. The facilities for traffic interchange over the five railroads entering St. Thomas has had to do with popularizing it for international shipments, and hundreds of carloads of coal, coke, and structural steel for Canada enter via St. Thomas's lake port. It is also growing in favor as a lightering point for the grain boats which ply the lakes, carrying the products of Western Canada.

The picturesqueness of Port Stanley has made it an ideal summer resort, and thousands of citizens from St. Thomas and other centres have their summer cottages there—only forty minutes ride from St. Thomas.



Amasa Wood Hospital