

# EVERYTHING in GLASS for BUILDING PURPOSES

*We Carry a Complete Stock  
at all our Branches*

PLATE GLASS

PRISM GLASS

SHEET “

CATHEDRAL GLASS

FIGURED “

MIRRORS

ART “

SIDEWALK PRISM

METAL STORE FRONTS

## The Consolidated Plate Glass Co. of Canada, Limited

MONTREAL  
30 St. Sulpice Street

TORONTO  
241 Spadina Avenue

WINNIPEG  
375 Balmoral Street

## DOMINION BRIDGE CO. LIMITED

Head Offices and Works,  
MONTREAL

Branch Offices and Works,  
Toronto, Ottawa, Winnipeg

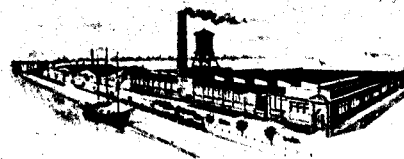
Supplied all the steel for the C. P. R.  
Building, King and Yonge Sts., Toronto.

**CAPACITY  
100,000 Tons**

### Engineers and Contractors

Steel Buildings of all kinds,  
Railway and Highway Bridges,  
Swing and Bascule Spans,  
Turntables, Electric Cranes,  
Hoisting Appliances, Lift Locks,  
Hydraulic Regulating Gates, etc.

Large Stock of Standard Structural  
Material at All Works



**GLASS BENDERS**  
TO THE TRADE

THE  
TORONTO PLATE GLASS  
IMPORTING COMPANY,  
LIMITED

91-133 DON ROADWAY  
TORONTO

GLASS IMPORTERS  
AND  
MANUFACTURERS