

**THE "SKREI" Cod Liver Oil.**



Pure, Pale and almost tasteless. No other Oil to compare with it.

**KENNETH CAMPBELL & CO.**

**THE QUEEN'S LAUNDRY BAR.**



Ask for it, and take no other. BEWARE OF IMITATIONS.

Trade Mark. | Made by THE ALBERT TOILET SOAP CO

**GRAY'S RED SPRUCE GUM**

SYRUP OF

GOUGHS & GOLDS

SOLD BY ALL DRUGGISTS

OUR NEW PACK FOR 1882.

50 All Chromo Cards. (Extra fine Stock). Artistic designs of Swiss, Floral, Sea-view, Wreath, Landscape, Gold & Silver panels, Bird Motifs, Butterfly, Moonlight, Summer & Winter Scenes, all in beautiful (not fancy) colors, with year name in fancy type. 10c. Sample Book of 90 costly styles for 1882, 25c. 40 per cent. paid. Agents or beautiful prizes given for clubs. Full particulars with every order. **CANTON PRINTING CO.** Northford, Conn.

70 Choice Chromo Cards, or 50 elegant new Chromos name on. The Crown Printing Co., Northford, Ct.

**The Scientific Canadian**

**MECHANICS' MAGAZINE**  
AND  
**PATENT OFFICE RECORD**  
A MONTHLY JOURNAL

Devoted to the advancement and diffusion of Practical Science, and the Education of Mechanics.

THE ONLY SCIENTIFIC AND MECHANICAL PAPER PUBLISHED IN THE DOMINION.

PUBLISHED BY  
**THE BURLAND LITHOGRAPHIC CO.**

OFFICES OF PUBLICATION,  
5 and 7 Bleury Street, Montreal.  
G. B. BURLAND General Manager.

TERMS:  
One copy, one year, including postage..... \$2.00  
One copy, six months, including postage... 1.10  
Subscriptions to be paid in ADVANCE.

**THE BURLAND LITHOGRAPHIC COMPANY**

(LIMITED)  
CAPITAL \$200,000,  
GENERAL  
Engravers, Lithographers, Printers  
AND PUBLISHERS,  
3, 5, 7, 9 & 11 BLEURY STREET,  
MONTREAL.

THIS ESTABLISHMENT has a capital equal to all the other Lithographic firms in the country, and is the largest and most complete Establishment of the kind in the Dominion of Canada, possessing all the latest improvements in machinery and appliances, comprising—

- 12 POWER PRESSES
  - 2 PATENT ENVELOPE MACHINES, which make, print and emboss envelopes by one operation.
  - 1 PATENT LABEL GLOSSING MACHINE.
  - 1 STEAM POWER ELECTRIC MACHINE.
  - 4 PHOTOGRAPHING MACHINES.
  - 2 PHOTO-ENGRAVING MACHINES.
- Also CUTTING, PERFORATING, NUMBERING, EMBOSSEING, COPPER PLATE PRINTING, and all other Machinery required in a first class business.
- All kinds of ENGRAVING, LITHOGRAPHING, ELECTROTYPING, and TYPE PRINTING executed in THE BEST STYLE
- AND AT MODERATE PRICES.

PHOTO-ENGRAVING and LITHOGRAPHING from pen and ink drawings A SPECIALTY.

The Company are also Proprietors and Publishers of the CANADIAN ILLUSTRATED NEWS, L'OPINION PUBLIQUE, and SCIENTIFIC CANADIAN.

A large staff of Artists, Engravers, and Skilled Workmen in every Department.

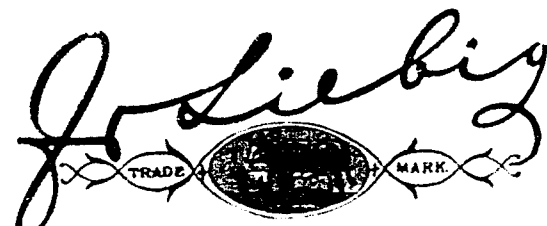
Orders by mail attended to with Promptitude; and prices the same as if given personally.

G. B. BURLAND,  
MANAGER.



THE GLEANER.

**LIEBIG COMPANY'S**



**EXTRACT OF MEAT**

FINEST AND CHEAPEST MEAT-FLAVOURING STOCK FOR SOUPS, MADE DISHES & SAUCES.

An invaluable and palatable tonic in all cases of weak digestion and debility.  
It is a success and a boon for which Nations should feel grateful.  
See Medical Press, Lancet, British Medical Journal, &c.  
To be had of all Grocers, Grocers, and Chemists.  
Sole Agents for Canada and the United States (wholesale only):  
C. David & Co., 43, Mark Lane, London, England.

CAUTION.—Genuine ONLY with fac-simile of Baron Liebig's Signature in Blue Ink across Label. This Caution is necessary, owing to various cheap and inferior substitutes being in the Market.

**LEA & PERRINS' SAUCE**



In consequence of Imitations of THE WORCESTERSHIRE SAUCE which are calculated to deceive the Public, Lea and Perrins have to request that Purchasers see that the Label on every bottle bears their Signature thus—



without which no bottle of the original WORCESTERSHIRE SAUCE is genuine.

Ask for LEA and PERRINS' Sauce, and see Name on Wrapper, Label, Bottle and Stopper. Wholesale and for Export by the Proprietors, Worcester; Cross and Blackwell, London, &c., &c.; and by Grocers and Oilmen throughout the World.

To be obtained of  
MERRILL, J. M. DOUGLASS & CO., MONTREAL; MERRILL, URQUHART & CO., MONTREAL.

40 CARDS all Chromo, Glass and Motto, in Case name in gold & jet 10c West & Co., Westvil's Ct.

**THE COOK'S FRIEND BAKING POWDER**

Has become a HOUSEHOLD WORD in the land, and is a HOUSEHOLD NECESSITY

In every family where Economy and Health are studied. It is used for raising all kinds of Bread, Rolls, Pancakes, Griddle Cakes, &c., &c., and a small quantity used in Pie Crust, Puddings, or other Pastry, will save half the usual shortening, and make the food more digestible.

**THE COOK'S FRIEND**

SAVES TIME. IT SAVES TEMPER. IT SAVES MONEY.

For sale by storekeepers throughout the Dominion and wholesale by the manufacturer.

W. D. McLAREN, UNION MILLS,  
55 College Street.

**CASTOR FLUID** (Registered.)

A delightfully refreshing preparation for the hair. Should be used daily. Keeps the scalp healthy, prevents dandruff, promotes the growth. A perfect hair dressing for the family. 25c. per bottle.

HENRY R. GRAY, Chemist,  
Sole Manufacturer,  
144 St. Lawrence Main Street.

**FURNITURE.**

FINE AND MEDIUM.  
AN IMMENSE STOCK.  
HENRY J. SHAW & CO.,  
726 Craig St. (Near Victoria Sq.)

**Montreal Post-Office Time-Table.**

MAY, 1882.

DELIVERY.		MAILS.	CLOSING.	
A. M.	P. M.		A. M.	P. M.
8 9 00		(A) Ottawa by Railway	8 15	8 00
8 8 40		(A) Province of Ontario, Manitoba & B. Columbia Ottawa River Route up to Carleton	8 15	8 00
		<b>QUE. &amp; EASTERN PROVINCES.</b>		
		Quebec, Three Rivers, Berthier, Sorel, per steamer		
3 35		Quebec, Three Rivers, Berthier, &c., by Q. M. O. & O. Railway		1 50
8 00		(B) Quebec by G. T. Ry.		8 00
8 00		(B) Eastern Townships, Three Rivers, Arthabaska & Riviere du Loup R. R.		8 00
12 50		Occidental Railway Main Line to Ottawa	7 00	
9 20		Do St. Jerome and St. Lin Branches		1 00
8 00		Do St. Jerome & St. Janvier	7 00	
10 00		St. Remi, Hemmingford & Laprairie Railway		2 15
8 00	12 45	St. Hyacinthe, Sherbrooke, Contrecoque, &c.	6 00	2 15 8
8 00		Acton and Sorel Railway		8 00
10 00		St. Johns, Stanbridge & St. Armand Station	7 00	
10 00		St. Johns, Vermont Junction & Sherford Railways		2 15
9 00		South Eastern Railway		4 45
8 00		(B) New Brunswick, Nova Scotia & P. E. I.		8 00
		Newfoundland, forwarded daily on Halifax, whence despatch is by the Packet leaving Halifax on the 10th and 24th April		8 00
		<b>LOCAL MAILS.</b>		
9 45		Valleyfield, Valois & Dorval		4 00
11 30		Beauharnois Route	6 00	
11 30		Boucherville, Contrecoque, Varennes & Vercheres		1 45
9 00	5 30	Cote St. Antoine and Notre Dame de Grace	9 00	1 45
9 00	5 30	Hochelaga	8 00	1 00
11 30		Huntingdon	6 00	2 55
10 00	5 30	Laohine	6 00	2 00
10 30	3 00	Laprairie	7 00	2 00
10 30		Longueuil	6 00	2 55
10 00		New Glasgow, St. Sophie, by Occidental Railway Branch		1 45
10 00		Longue Pointe, Pointe-aux-Trem, & Charlemagne	8 00	1 45
8 30	2 30	Point St. Charles	8 00	2 00
11 30		St. Onegonde	6 00	1 45
10 00		St. Lambert		2 15
1 30		St. Laurent, St. Martin & St. Eustache	7 00	
11 30	5 30	Taunier West (St. Henri de M.)	6 00	
10 00		Sault-au-Roccollet & Pont Vian (also Bongie)		2 00
10 00	6 55	St. Jean Baptiste Village, Mills-End & Coteau St. Louis	7 00	1 00
			11 45	3 00
		<b>UNITED STATES.</b>		
8 40		Boston & New England States, except Maine	7 00	
8 40		New York and Southern States	6 00	
10 30		Island Pond, Portland & Maine		2 50
8 00	12 30	(A) Western & Pacific States	8 15	8 00
		<b>GREAT BRITAIN, &amp;c.</b>		
		By Canadian Line on Thursday		7 00
		By Canadian Line for Germany on Thursday		7 00
		By Cunard on Monday		9 15
		Do. Supplementary, 11th and 25th December		9 15
		By Packet from New York for England, on Wednesday		9 15
		By Hamburg American Packet to Germany, Wednesday		9 15
		By White Star and Inman Lines 14th and 28th April		9 15

(A) Postal Car Bags open till 8.45 a.m., and 9.15 p.m.  
(B) Do 9.00 p.m.

Mail for St. Thomas, W. I., Brazil, Argentine Republic and Montevideo will be despatched from Halifax N.S., once a month—date uncertain.

Mails leave New York by Steamer:

- For Bahama Islands, April 12th.
- Bermuda, April 6th, 13th, 20th and 27th.
- Brazil, April 5th and 11th.
- Cuba and Porto Rico, April 8th and 22nd.
- Cuba, Porto Rico & Mexico, April 6th, 20th & 27th.
- Cuba and W. I. via Havana, April 15th and 29th.
- Santiago and Cienfuegos, Cuba, April 25th.
- South Pacific and Central American Ports, April 1th, 20th and 29th.
- Windward Islands, April 5th and 29th.
- Venezuela and Curacao, April 15th.

Mails leave San Francisco:  
For Australia and Sandwich Islands, April 8th.  
For China and Japan, April 19th.

**BANK OF MONTREAL.**

NOTICE is hereby given that a Dividend of FIVE PER CENT upon the paid up capital stock of this Institution, has been declared for the current half year, and that the same will be payable at its Banking House in this city, and at its branches on and after,

Thursday 1st day of June next.

The Transfer Books will be closed from the 17th to the 31st of May next, both days inclusive.

The Annual General Meeting of the Shareholders, will be held at the Bank on Monday the 5th day of June next. The chair to be taken at one o'clock.

By order of the Board,  
A. MACNIDER,  
Assistant General Manager.

Montreal, 25th April, 1882.