

THE BELL Telephone Co'y OF CANADA.

—Manufacturers and Dealers in—

Telegraph & Electrical
INSTRUMENTS,

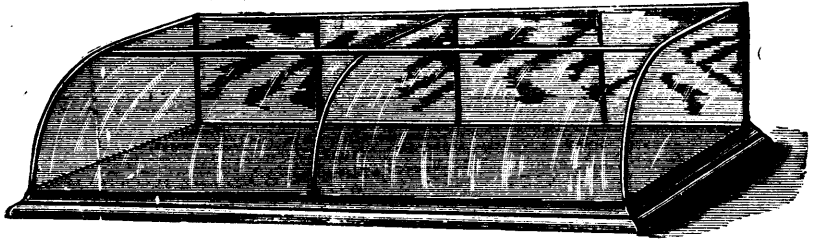
Electro-Medical Apparatus,
Fire Alarm Apparatus,
Magnets for Mills

Electrical Gas Lighting Apparatus,
Burglar Alarms,
Hotel and House Annunciators,
Electric Call Bells, &c., &c.

For further particulars apply to

No. 12 HOSPITAL STREET,
MONTREAL.

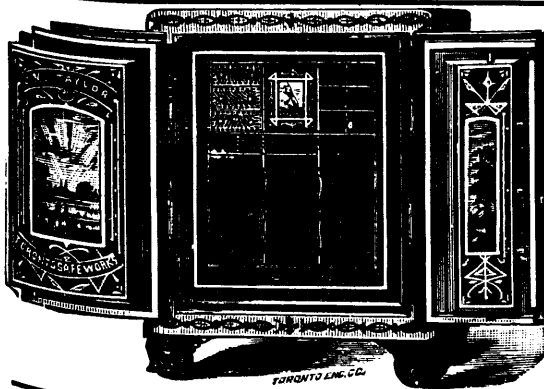
Dominion Showcase Works, WAGNER, ZEIDLER & CO. (Formerly DOMINION SHOWCASE CO.)



Showcases, Store-Fittings, Tables, Office Cabinets, Desks Mantles, &c

HIGHEST AWARDS WHEREVER EXHIBITED

Factory and Head Office: **Toronto Office and Show Rooms**
WEST TORONTO JUNCTION. 40 YONGE STREET.
Send for Catalogue and Price List, and address all communications to Head Office.



J. & J. TAYLOR'S

Double Tongue
and Groove
FIRE-PROOF

SAFES

(Patented
January 14th,
1886.)

Established 33 years.

All our new style Fire-proof Safes are fitted with **TWO COMPLETE TONGUES AND TWO GROOVES** on both the door and door frames, which effectually prevent the heat from passing between the door and frame into the interior of the safe.

They are also fitted with **CHILLED CHROME STEEL PLATES** under the Lock and Bolt Spindles to prevent drilling; and have **DRY AIR-CHAMBER** inside to prevent dampness to papers.

See Catalogues and Prices on application.

J. & J. TAYLOR, Toronto Safe Works.

The Intercolonial

RAILWAY OF CANADA.

The Royal Mail, Passenger and Freight
Route between Canada and
Great Britain,

AND

Direct Route between the West and all points on the
Lower St. Lawrence and Baie de Chaleur; also
New Brunswick, Nova Scotia, Prince Edward
Island, Cape Breton, Newfoundland,
Bermuda and Jamaica.

New and elegant Buffet Sleeping and Day Cars run on Through
Express Trains.

Passengers for Great Britain or the Continent by leaving Toronto
per 8.30 a.m. train Thursday, will join outward Mail Steamer at
Halifax a.m. Saturday.

Superior Elevator, Warehouse and Dock accommodations at Halifax
for shipment of grain and general merchandise.

Years of experience have proved the Intercolonial, in connection
with Steamship lines to and from London, Liverpool and Glasgow to
Halifax, to be the quickest Freight route between Canada and Great
Britain.

Information as to Passenger and Freight Rates can be had on
application to

ROBERT B. MOODIE,

Western Freight and Passenger Agent, 93-Rossin House Block,
York Street, **TORONTO.**

D. POTTINGER,

Chief Superintendent.

JAMES LESLIE

MANUFACTURER OF

MACHINE CARD CLOTHING AND LOOM REEDS.

LEATHER
BELTING
FACE
LEATHER
&
HOSE



COTTON
AND
WOOLEN
MILL
SUPPLIES

COTTON LOOM HARNESS AND WIRE HEDDLES

OFFICE AND FACTORY

JUNCTION OF CRAIG AND ST. ANTOINE STREETS.
MONTREAL.