

E. P. Hannaford, for 30 years to 1896 chief engineer of G.T.R., died suddenly in Montreal, Aug. 18, aged 68. He was born at Stoke Gabriel, Devonshire, Eng., in 1834, and entered railway service in 1851 in England, under Sir I. K. Brunel, and was particularly engaged on the engineering staff of the South Devon Ry., a 6 ft. gauge line, from Exeter to Plymouth, designed to be operated on the "Atmospheric" system. This system was operated on the first section in 1844, but was soon abandoned, and the line completed as a steam railway soon after Mr. Hannaford joined the staff. The big bridge over the Tamar at Saltash, Cornwall, was designed and mainly constructed during the time Mr. Hannaford was with Sir I. K. Brunel. Coming to Canada, Mr. Hannaford was appointed assistant engineer of the G.T.R. in 1857, and Chief Engineer in 1866. In 1873 he was appointed Chief Engineer of the International Bridge Co., and superintended the construction of the bridge over the Niagara river at Fort Erie. He was also Chief Engineer of the Montreal and Champlain Jct. Ry., and of the Jacques Cartier Union Ry., and United States and Canada Ry.

#### TRANSPORTATION APPOINTMENTS.

**Algoma Central and Hudson Bay Ry.**—W. Apps, formerly Master Car Builder of the C.P.R., has been appointed Master Car Builder of the A.C. and H.B. Ry., vice H. M. Perry, resigned.

J. C. Urich has been appointed Superintendent at Michipicoten Harbor, vice J. R. Patterson, resigned.

G. A. Montgomery has been appointed Superintendent at Sudbury, vice J. C. Urich, promoted.

**Brockville, Westport and Sault Ste. Marie Ry.**—W. H. Cole has been appointed Vice-President.

**Canadian Northern Ry.**—J. M. Robb, heretofore with the Virginia and South West Ry., has been appointed Superintendent of Motive Power of the C.N.R. Office at Winnipeg.

W. S. R. Cameron, heretofore City Freight Agent at Winnipeg, has been appointed Travelling Freight and Passenger Agent.

R. Crawford has been appointed City Freight Agent.

D. Jelly, heretofore Roadmaster of the C.P.R. at Schrieber, Ont., has been appointed Roadmaster of the C.N.R. at Port Arthur, with jurisdiction from Port Arthur to Rainy River.

#### GRAND TRUNK RAILWAY COMPANY OF CANADA

NOTICE is hereby given that the Ordinary General Half-Yearly Meeting of the Grand Trunk Railway Company of Canada will be held at the City Terminus Hotel, Cannon Street, London, E.C., on Monday, the 13th day of October, 1902, at Two o'clock, p.m., precisely, for the purpose of receiving a Report from the Directors, and for the transaction of other business of the Company.

Notice is also given that the Transfer Books of the Company, will be closed from Thursday, the 18th day of September, to the day of Meeting, both days inclusive.

By order,

C. RIVERS WILSON, President.

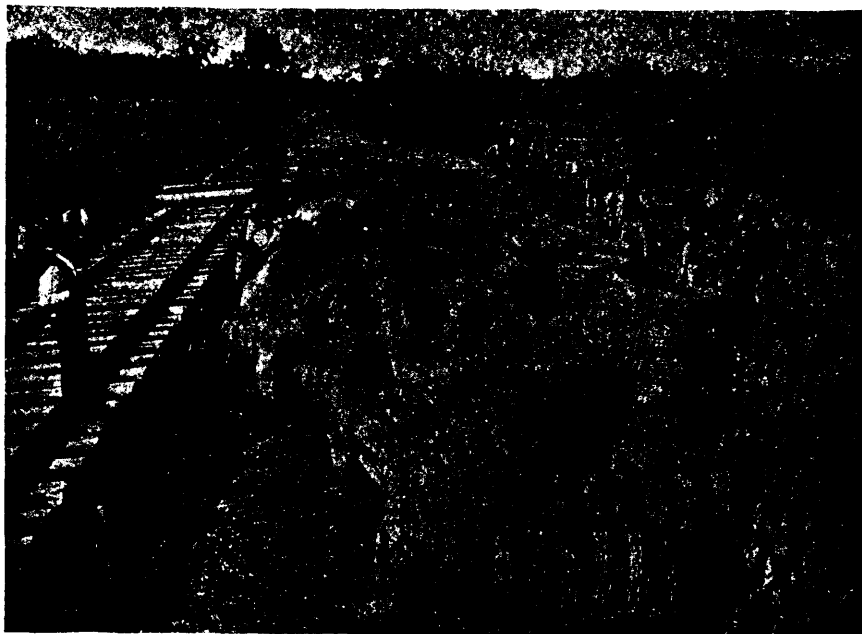
H. H. NORMAN, Secretary.

Dashwood House,  
9 New Broad St., London, E.C.,  
5th September, 1902.

**Canadian Pacific Ry.**—G. Mc. L. Brown, who was recently appointed Superintendent of Sleeping, Dining and Parlor Cars, also has jurisdiction over the Co.'s hotels in the same manner as his predecessor, J. A. Sheffield, had. This includes the Banff, Field, Glacier, North Bend, Sicamous and Vancouver hotels,

and the Emerald Lake and Lake Louise chalets, but not the Chateau Frontenac and Place Viger hotels. He also has jurisdiction over the news department.

The reorganization of the engineering department has been completed. The Chief Engineer, E. H. McHenry, is in general



Page coiled wire Fencing is in use on practically every railroad, both great and small, in Canada, and some of the larger roads have in the neighbourhood of a thousand miles of it. It is found that it wears so much better than any other fence; there is no comparison. We can supply any height and weight wanted, and either galvanized or painted. The latter we can furnish for less money, and is adapted to localities where galvanized wire rusts.

THE PAGE WIRE FENCE CO., LIMITED, WALKERVILLE, ONT.

## The POLSON IRON WORKS

TORONTO, CANADA.

**Engineers, Boilermakers and Steel Shipbuilders.**

OFFICE AND WORKS—Esplanade St. East, TORONTO.

## THE CANADA SWITCH AND SPRING CO. Limited

CANAL BANK, PT. ST. CHARLES, MONTREAL.

MANUFACTURERS OF

**STEEL CASTINGS**

(Open Hearth System)

**Springs, Frogs  
Switches**

**Interlocking Plants Installed  
Jenne Track Jacks, Etc.**

FOR STEAM AND ELECTRIC RAILWAYS.