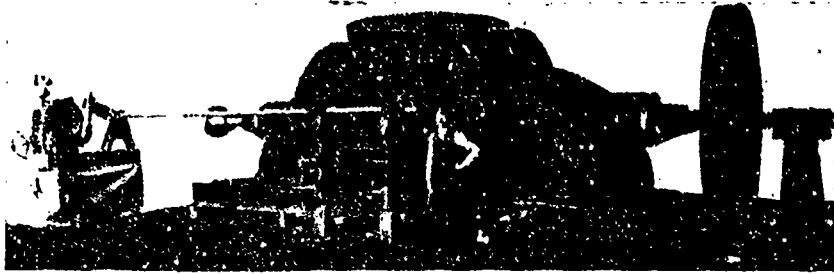


McCORMICK TURBINES

State your Requirements and send for Catalogue



Estimates Furnished for Complete Power Plants, and Results Guaranteed

Represents a pair of 30-inch McCormick Turbines, with Governor and Fly-wheel for regulating speed. The Turbine Shaft is direct-connected to a 750 k.w. Generator.

Four Outfits like this, developing 5,000 h.p., and one pair of 51 inch of 1,150 h.p., furnished the Sacramento Electric, Gas & Railway Co., Folsom, Cal. Power is transmitted 23 miles.

S. MORGAN SMITH CO. - YORK, PA., U.S.A.

TRUITT REGULATING LAMP AND SOCKET



Cheapest and most economical regulating lamp in existence. No coils to burn out, no key or switch required. With one lamp and socket four different candle-powers can be obtained—1, 8, 16, or 24 C.P.

Write for Prices and Agencies.

SOLE AGENTS FOR CANADA

NESS, MCLAREN & BATE,
419 JAMES STREET - MONTREAL.

Tiny Lihtan Enclosed Arc Lamp

"The Greatest Competitor of the Incandescent Gas Lamp."

Cheap TO BUY TO OPERATE

FOR SALE BY . . .

- W. A. Johnston Electric Co., Toronto, Canada.
- H. B. Coho, 143 Liberty St., New York City.
- Sawyer Elec. Co., Sawyer Building, Philadelphia, Pa.
- Kingsmay, Samuel & Co., Baltimore, Md.
- Doubleday-Hill Elec. Co., Pittsburg, Pa.
- Los Angeles Elec. Co., Los Angeles, California.

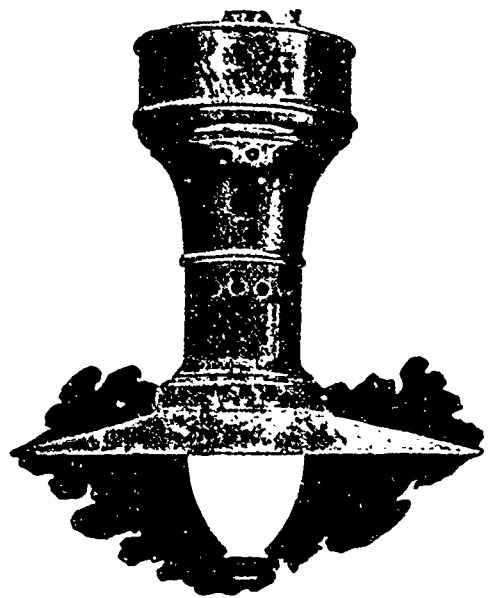
WRITE FOR PRICES AND CIRCULAR

Manufactured by . . .

THE SAFFORD ARC LAMP MFG. CO.

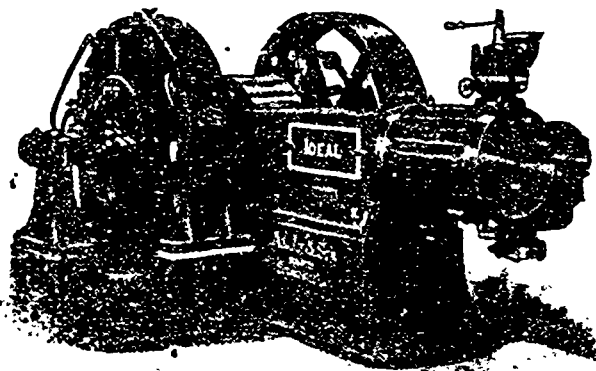
BUFFALO, N.Y.

13' LONG.



2 1/2 AMPERES.
110 VOLTS.
50 HOURS LIFE.

The "IDEAL" High Speed Engine



is particularly adapted to direct connected work, on account of its Perfect Balance, Quiet Running, Automatic Lubrication and Cleanliness, in addition to its massive and compact construction.

BUILT BY . . .

Write for Catalogue.

The GOLDIE & MCGULLOUGH CO., Limited, GALT, ONT.