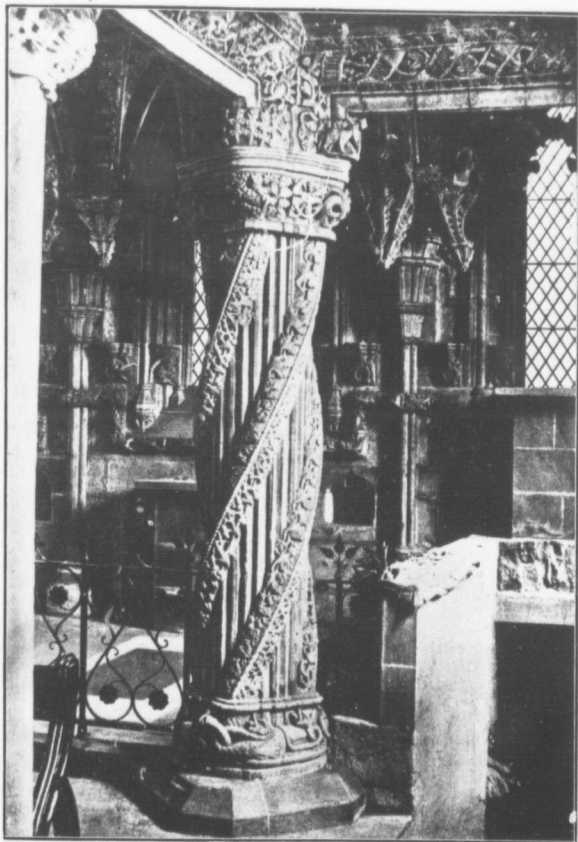


SUNSHINE

Vol. XIV.
No. 7

MONTREAL

JULY,
1909



THE 'PRENTICE PILLAR, ROSSLYN CHAPEL.

The 'Prentice Pillar, with its sculptured foliage is the most celebrated feature of Rosslyn Chapel. The legend is that the master-builder, unable to execute the design for this pillar, went to Rome to study. On his return he found the pillar completed by his apprentice. Crazy with envy the master struck the apprentice dead with his mallet.