

house is located on the west bank of the river. These boat houses afford facilities for the inspection of the aqueduct. In the boat house on the east bank a blow-off pipe is provided for draining the aqueduct.



Fig. 3.—Bucyrus Drag Line Bucket.

In order to overtake their schedule the following camps have been opened up: Contract No. 30, Mile 17; contract No. 34, Mile 89 and Mile 97.

Fig. 2 shows the Blaw steel forms for the circular pipe at Mile No. 17.

Fig. 3 shows the bucket of the class No. 24 Bucyrus drag line used by the contractors on contract 34 at camp

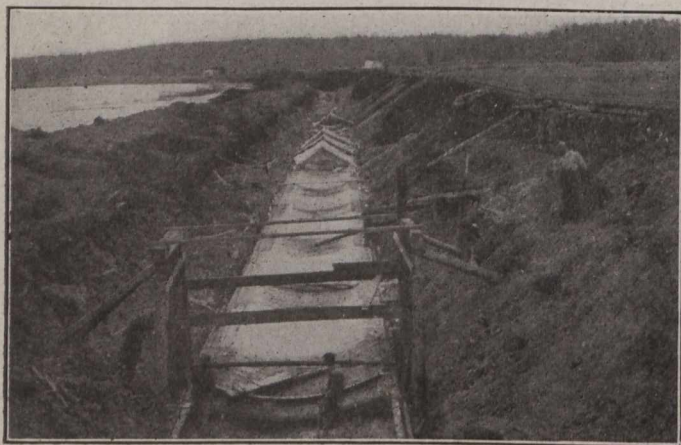


Fig. 4.—Inverts—Just West of the Intake Along Indian Bay.

7, Mile 89. General Superintendent Wm. Smail, of the Winnipeg Aqueduct Co., is shown beside the bucket.

Fig. 4 shows the invert laid just west of the intake along Indian Bay. In the foreground a railway trestle is shown in process of erection for railway connection to dock where supplies are brought by boat and barge from

Kenora. The tent covers over the invert are used to protect the inverts for finishing from the effects of bad weather.

Fig. 5 shows the arch completed on the inverts shown in Fig. 4. A travelling chute is shown in foreground for depositing the concrete.

In order to furnish aggregate for concrete to meet the increased progress on the various contracts the Water District made certain changes in their gravel plant at pit

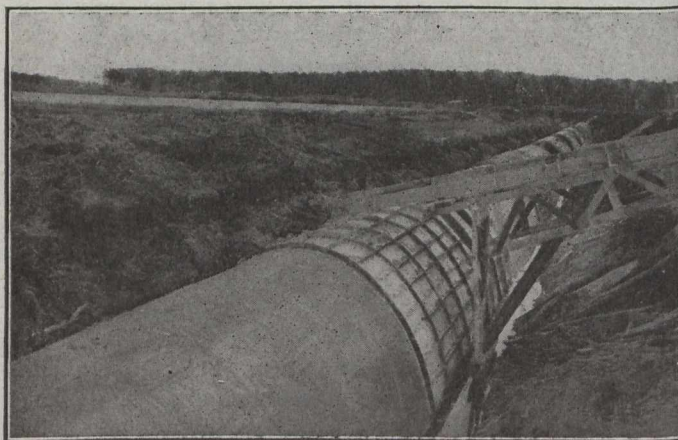


Fig. 5.—Completed Arch.

No. 1 and opened up pit No. 2, Mile 80, and a rock plant at Mile 95.5.

Rock is added to the government pit gravel in order to reduce the sand content in the aggregate. Fine sand, government pit gravel and rock are used to make the aggregate for concrete at the east end of the work. The western portion is supplied from the District's gravel plant at pit No. 1.

At the end of December, 1915, 65,390 lin. ft. of arch had been laid, and at the end of June, 1916, this had been increased to 85,340 lin. ft. The total length of the concrete aqueduct is 449,000 feet.

NEW INCORPORATIONS.

Regina, Sask.—Harris Engineering Company, Limited, \$20,000.

Victoria, B.C.—Victoria Gravel Pit Company, Limited, \$100,000.

Vancouver, B.C.—Mahwitte Dredging Company, Limited, \$250,000.

Edmonton, Alta.—Crown Sand and Gravel Company, Limited, \$150,000.

Toronto, Ont.—Wright-Hargreaves Mines, Limited, \$2,500,000. M. McDowell, G. R. Sproat, C. H. Kemp.

Quebec, Que.—The Victor Quarry Company, Limited, \$25,000. V. Mercier, Jeanne Turcotte, Berthe Blanchet.

Woodstock, Ont.—The Woodstock Reinforced Concrete Post Company, Limited, \$40,000. B. Blair, J. W. Clark, R. Gibb.

Montreal, Que.—The Oka Gold and Lead Mining Company, Limited, \$1,000,000. T. Scott, J. E. Moranville, J. J. Trickey.

Port Arthur, Ont.—Canadian Conley Frog and Switch Company, Limited, \$150,000. W. F. Langworthy, G. A. McTeigue, Laura McComber.

Toronto, Ont.—The Caswell Mining Company, Limited, \$1,000,000. B. F. Fisher, W. N. Robinson, Ida B. Lynn; the Arnot Construction Company, Limited, \$40,000. D. Arnot, O. Rouse, J. B. Nicholson; North Victoria Lead Mines, Limited, \$49,500. W. H. O. Mercer, Irene O. Allan, Lily Guylar, Ethel M. Gallagher; Peerless Artificial Stone, Limited, \$40,000. G. H. Shaver, E. A. Harris, Gertrude B. Marrin.