

THE FROST & WOOD COMPANY, Limited

HEAD OFFICE AND WORKS.
SMITH'S FALLS, Ont.

FROST & WOOD No. 8 MOWER

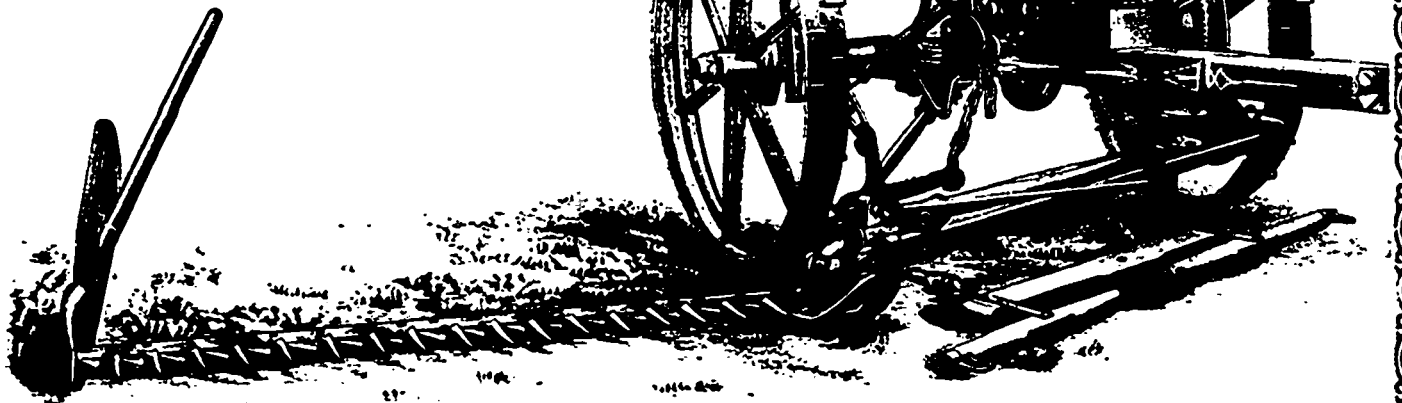
With Roller and
Ball Bearings
Spring Footlift
All the Very Latest Improvements

SIMPLICITY
STRENGTH
DURABILITY
ECONOMY
COMFORT



Call on our nearest agent and
see our samples before buying
elsewhere. It will pay you.

HAY SAVED AND MONEY MADE



WIDTH OF CUT, 4½, 5 AND 6 FEET.

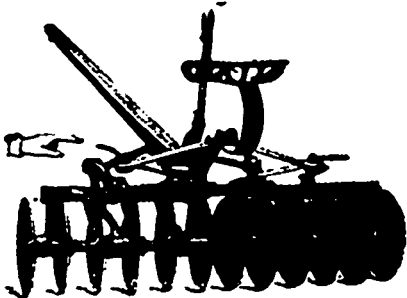
THE ONLY MOWER THAT REALLY DOES WHAT OTHER MOWERS CLAIM TO DO.

If your crop is **LIGHT** you need the **BEST CUTTER** to **SAVE IT ALL**. If your crop is **HEAVY**, you need the most powerful cutter to **CUT IT ALL**. The **FROST & WOOD No. 8** stands for the **HIGHEST PERFECTION** in grass-cutting machinery. You **MAKE NO MISTAKE**, and **SAVE MONEY** when you buy a No. 8. It is the **BEST**.

BRANCH OFFICES: 77 Jarvis St., TORONTO, Ont.; Market Square, WINNIPEG, Man.; LONDON, MONTREAL, QUEBEC, TRURO, N.S.; ST. JOHN, N.B.
Send for Illustrated Catalogue. When writing mention **FARMING**.

Farmers

We are surprised to read the claims of some of the makers of Disc Harrows. One would think it was the **WATFORD DISC** they had reference to.



The up-to-date disc of to-day is a throw-out harrow. Still the Watford will throw either in or out. The leading improvement in disc harrows to-day is the spring pressure and its application to hard or soft ground, to cut a uniform depth, and to avoid weight on horses' necks. This pressure must be applied directly over and in line with the centre of discs, just where

you will find it in the Watford, and where we have had it for years. Comfort for rider. Buggy Spring construction. (See Cut.)

Special Offer—Where Watford Implements are not sufficiently known we will name an interesting price, it being understood that special cut is to have no bearing on regular selling price—a special price for a special purpose.

Yours for up-to-date implements on the farm,

Thom's Implement Works, Watford, Ont.

The Unparalleled Reputation of

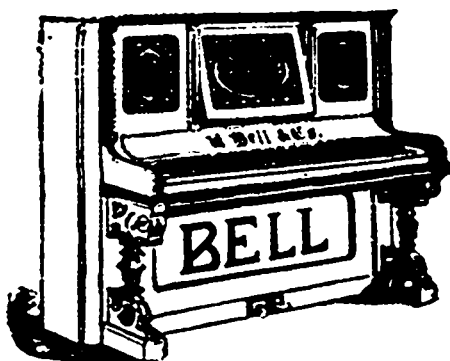
The BELL PIANOS and ORGANS . . .

Is accepted without dispute
by all other makers

ORGANS from \$40 upwards
PIANOS from \$260 upwards

Only the best materials used. All others are rejected.
On Reasonable Terms from all Agents

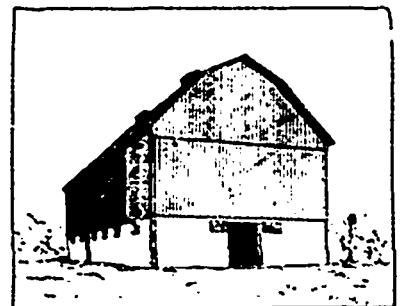
Manufactories: GUELPH, Ont.



THE BELL ORGAN & PIANO CO., LIMITED

Estate of JOHN BATTLE

THOROLD, ONT.



This is the Barn that the Hurricane Blew Down
but the walls built with Battle's Thorold
Cement stood firm as a rock.

The Thorold Cement is tested by a Hurricane
Read what Mr. Hunt Kennedy, of Ilderton, Ont.
says about Thorold Cement:

ILDERTON, ONT., Jan. 27th, 1899.

ESTATE OF JOHN BATTLE,
Manufacturers Thorold Cement,
Thorold, Ont.

DEAR SIR, We think Thorold Cement is the best
cement in use for building walls and floors in stables.
Last June I built a wall 36 x 109 x 10 ft. high at back,
and 8 ft. at front. We were 12 days building it, under
the management of Mr. P. Howey, Ilderton (five men
in all). We raised the barn on the wall in 12 days
after it was completed. The next day there came a
hurricane, which blew down the framework. It all
fell on the wall but one bent. The posts were 26 feet
long and seven of them broke. The wall stood the
test, which was a very trying one, and it only chipped
off a little in one place. I intend putting floors in the
spring with Thorold Cement, for I think no other ce-
ment could have stood such a test.

Yours truly, HUNT KENNEDY.

ESTATE OF JOHN BATTLE

Mention this paper. THOROLD, ONT.