

OATS

OATS

OATS

SHIP your OATS to

G. B. MURPHY & CO.

and obtain HIGHEST PRICES, also prompt settlements.

214 GRAIN EXCHANGE, WINNIPEG, MAN.

REFERENCES: EASTERN TOWNSHIPS AND UNION BANKS.



\$60

ROUND TRIP ALL NORTH PACIFIC

COAST CITIES

On sale June 1st to September 15th
Limit October 31st, 1906

STOPOVERS

TOURIST RATES TO ALL SUMMER RESORTS FROM JUNE 1st

FAST FREIGHT LINE

Route all your freight care Northern Pacific at St. Paul or Duluth.

H. SWINFORD, General Agent
R. CREELMAN, Ticket Agent
341 MAIN STREET, WINNIPEG

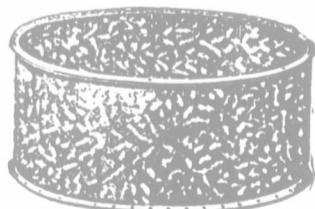
TOWN OF NANTON

Southern Alberta on the Line of C. P. R.

Daily service. Fifty seven miles south of Calgary. If you want to buy Beautiful Town Site Lots, Choice Farming Lands, and get in on the ground floor in the very best section, write to us promptly, as the opportunities to get some of these choice lands are daily growing less. It will pay you to come and select for yourself. We will give you a square and honest deal, and place you on the road to success.

McPHAIL & McINTYRE.

STEEL TANKS FOR ALL PURPOSES.



Corrugated and Plain. Galvanized Steel Tanks. Portable Grain Tanks.

RED RIVER METAL CO.
51 & 53 Aikins St. Winnipeg

WE BUY FURS SKUNK MINK COON
and all other kinds. Top market prices and quick cash returns. Trappers Guide Free to those who ship and mention this ad.
McMILLAN FUR & WOOL CO.
MINNEAPOLIS, MINN.
WRITE FOR CIRCULARS

Through Tourist Car Service to California.

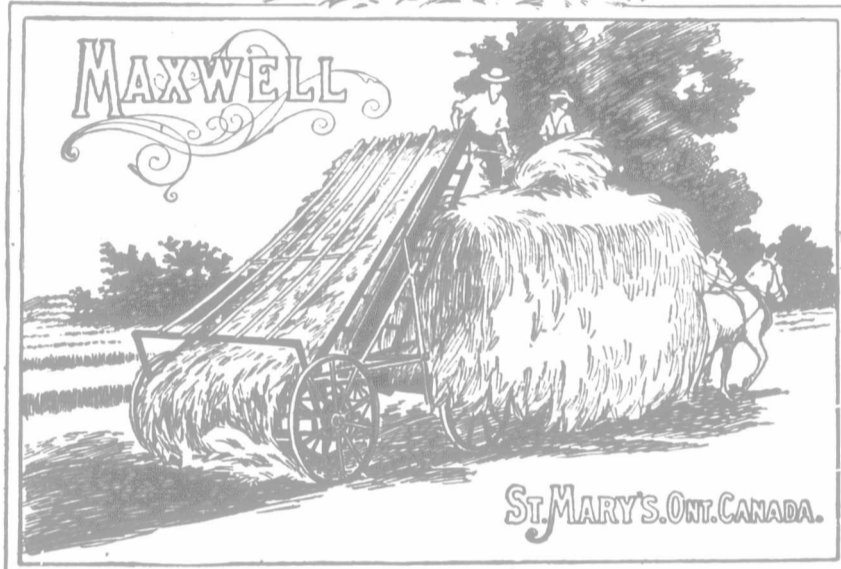
Via Chicago, Great Western Railway. Cars leave Minneapolis and St. Paul on four days of the week—Monday, Tuesday, Wednesday, and Thursday. For full information apply to J. P. Elmer, G. P. A., St. Paul, Minn.

SAVE YOUR HAY & SAVE EXTRA LABOR

SPECIAL LABOR SAVING TOOLS



MAXWELL TEDDER SIDE DELIVERY RAKE & LOADER.



IS THERE AN AGENT IN YOUR DISTRICT

IF NOT ADDRESS THE FIRM DIRECTLY

DAVID MAXWELL & SONS, St. Mary's, Ontario, Canada.

Buy a Farm

I HAVE over 6,000 acres of improved lands for sale ranging from \$12 up to \$30 per acre to choose from. This is one of the best wheat-growing districts in the West. Write me for particulars and government reports, or call at my office in Hyde Block.

J. R. AGAR, Real Estate & Auctioneer, Balgonie, Sask.



SMYTH, HARDY & CO., of Calgary,
Handle all kinds of power for FARM AND RANCH PURPOSES.

Write them for catalogues and prices of Canadian Airmotors and Gasoline Engines.
Address, Box 3

Imperial Bank of Canada

HEAD OFFICE: TORONTO

Capital (Paid-up) - \$3,000,000
Reserve Fund - \$3,880,000

D. R. WILKIE, President and Gen'l Manager.
ROBT. JAFFRAY, Vice-President.

AGENTS GREAT BRITAIN—Lloyds Bank, Limited, Head Office, Lombard Street, London.
BRANCHES in Manitoba, Saskatchewan, Alberta, British Columbia, Quebec, and Ontario.

WINNIPEG BRANCHES

North End—Corner Main street and Selkirk avenue. F. P. JARVIS, Mgr.
Main Office—Cor. Main street and Bannatyne avenue. N. G. LESLIE, Mgr.

Province of Saskatchewan.

NOTICE TO STOCK OWNERS.

Notice is hereby given that on and after the First day of July, 1906, the joint office of the Recorders of Brands for the Provinces of Alberta and Saskatchewan will be situated at Medicine Hat, Alberta. All communications in connection with brands should after that date be addressed to THERE-CORDER OF BRANDS, MEDICINE HAT, ALBERTA

Money sent in payment of fees should be remitted by postal note, money order, or express order made payable to The Recorder of Brands, Medicine Hat. If cheques are sent, they must be certified by the bank on which they are drawn, and the necessary exchange must be included.

RECORDING OF BRANDS IN BOTH PROVINCES.

Persons ranging cattle in the vicinity of the inter-provincial boundary (the Fourth Meridian) when applying for brands should, in order to protect themselves, also apply for a record of the same in the Province of Alberta, which may be effected on payment of an additional fee of \$1.00.

J. R. C. HONEYMAN,

Deputy Commissioner of Agriculture
Department of Agriculture,
Provincial Government Offices,
Regina, Sask. June 1st, 1906.

WE edit, compile and print Live Stock Catalogues.

FARMER'S ADVOCATE, Limited
14-16 Princess St. Winnipeg, Manitoba

Five Famous Trains

and why you should use them.

- 8.30 a.m. **The Daylight Express**
To Milwaukee and Chicago. Past the grand scenery of the Mississippi River by daylight.
- 4.00 p.m. **The Afternoon Express**
To Dubuque, Rock Island and Chicago. Best Train for Lower Mississippi River points.
- 7.20 p.m. **The Fast Mail**
To Milwaukee and Chicago. Fastest Train from Twin Cities to Chicago.
- 8.35 p.m. **The Pioneer Limited**
To Milwaukee and Chicago. Preferred Train of all others for first-class travel to Chicago.
- 11.00 p.m. **The Night Express**
To Milwaukee and Chicago. Splendid Train for Late Night Travelers.

LONGER, HIGHER AND WIDER BERTHS.

FROM ST. PAUL & MINNEAPOLIS EVERY DAY VIA THE

Chicago Milwaukee & St. Paul Railway

W. B. Dixon, Northwestern Passenger Agent, Saint Paul
J. I. Gillick, Commercial Agent, Winnipeg