

R283.713
As 23
1894, no. 12
Lans

H

The Parish Guide.

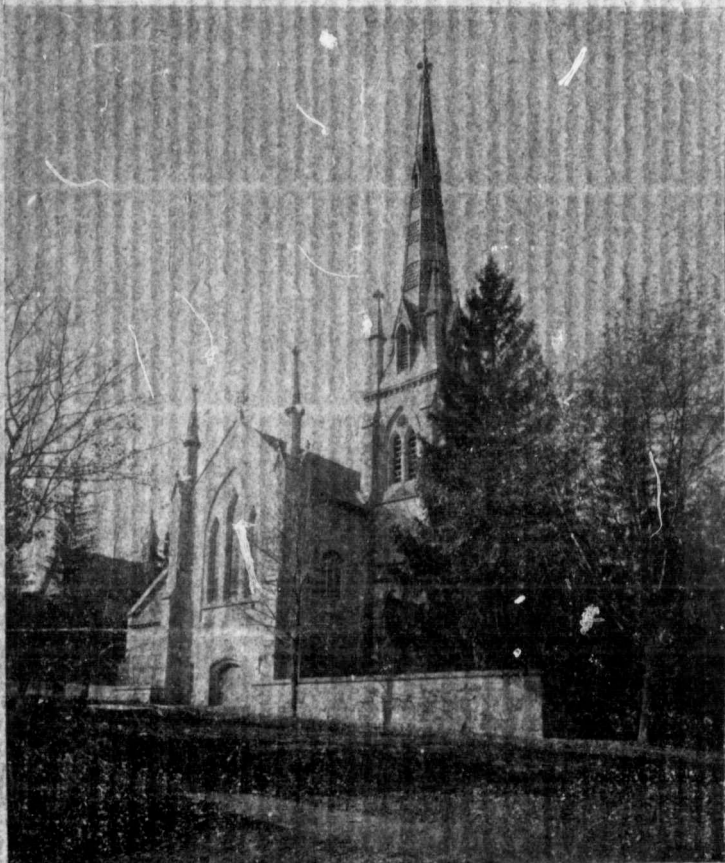
DECEMBER, 1894

No. 12.

CHURCH OF THE ASCENSION,

CORNER JOHN AND MARIA STS.,

HAMILTON.



CLERGY:

REV. W. H. WADE, RECTOR,
Cor. Hannah and McNab.

REV. F. E. HOWITT, ASSISTANT,
224 Bay St. South.

SERVICES:

Day.—Morning service, 11 o'clock.

Evening " 7 "

Sunday-school, 3 p. m.

Rector's Bible Class, 3:15 p. m.

Holy Communion—1st Sunday in month, 11 a. m.

" 2nd " " " 9 "

" 3rd " " " 7 p. m.

" 4th " " " 11 a. m.

Baptism—2nd Sunday in month, 4:15 p. m., and at any other time upon notice being given.

Service at the Mission Room, Wellington Street, every Sunday evening at 8 o'clock.

Monday.—Daughters of the King, 7:30 p. m. Weekly.

Tuesday.—Woman's Auxiliary, Missionary Association, 2:45 p. m. Weekly.

" District Visitors—1st Tuesday in month.

" Dorcas Society, as arranged.

" Temperance Society, 8 p. m. Monthly.

Wednesday.—Service, 8 p. m. Weekly.

" S. Andrew's Brotherhood, 9 p. m. Weekly.

Friday.—Confirmation Class.

" Service in Advent and Lent, 8 p. m.

Saturday.—W. A. M. A., Jun or Branch, 10 a. m. Weekly.

" Choir practice, 8 p. m. Weekly.