

## Market Review and Forecast

**TORONTO, Oct. 29.**—The Census and Statistics Office has issued its second estimate of Canadian crops for 1917. These returns bring based to a larger extent upon thorough results than was the first estimate. The first estimate was too high in the case of wheat in now estimated at 231,780,000 bushels, an average per acre of 24.7 bushels, as compared with 24.5 bushels a month ago. Oats are estimated at 232,670,000 bushels, or 24.5 bushels an acre, and rye 1,230,000 bushels. The condition of root and fodder crops measured against the standard of 1916 as representing a full crop, was on Sept. 30th as follows: Potatoes, 54; turnips, 10; mangels, carrots, etc., 77; sugar beets, 75; fodder corn, 73; and alfalfa, 81.

Ontario reports indicate that threshing returns show good average yields for most of the grain crops. Beans and late buckwheat have been more or less injured by frost and much frost corn will be unfit for feed. Most fall wheat will enter the winter with a good crop, but some has been sown late and there is little October growth. Potatoes will be a fair to good crop.

There have been few changes on the grain market of note, butter and eggs still show an upward tendency, and the live stock market is fairly quiet. Hogs, however, are down.

### WHEAT.

There has been little movement of grain to market and little change is expected until colder weather sets in, which accounts for the slowness of the Ontario wheat market. Demand for Western wheat by Ontario millers is of a very moderate order. There is a steady enquiry for flour, however, at steady prices. Quotations:—

Manitoba Wheat.—In store, Fort William, nominal (including 2½ cent tax); No. 1 northern, \$2.35; nominal No. 2 northern, \$2.25; No. 1 northern, \$2.17; No. 4 wheat, \$2.00.

Ontario Wheat.—New crop, No. 3, \$2.25 basis in store, Montreal.

### COARSE GRAINS.

There has been a slight strengthening in cash prices on Manitoba oats. Otherwise the market has been uneventful. Quotations:—

Manitoba Oats.—No. 1 C.W., 65¢; in store, Fort William, No. 1 feed, 65¢; extra No. 1 feed, 65¢; No. 1 feed, 65¢; American Corn.—No. 1 white, 65¢; in store, Ontario Oats.—No. 1 white, 65¢; in store, nominal No. 3, 65¢; in store, nominal.

Feed.—Nominal.

Barley.—Milling, now, \$1.15 to \$1.20, according to freight, outside.

Buckwheat.—Nominal.

Rye.—No. 2, \$1.15.

At Montreal.—Corn.—American No. 2 yellow, \$2.20 to \$2.25; (also Canadian wheat, No. 2, 75¢; extra No. 1 feed, 75¢; No. 1 feed, 75¢; Barley.—Manitoba feed, \$1.15; do, milling, \$1.15.

MILL FEEDS.

Mill feeds are quoted in car lots, delivered, Montreal freight, shorts, \$12; bran, 15¢; middlings, 16¢ to 18¢; good feed flour, \$3.25 per bag. At Montreal bran in quoted 15¢; shorts, 16¢ to 18¢; middlings, 18¢ to 20¢; shorts, 18¢ to 20¢; middlings, 18¢ to 20¢.

HAY AND STRAW.

Hay, extra No. 1, is quoted on track here, \$15.00 to \$17.00; medium, \$10 to \$12; straw, car lots, \$7 to \$8. At Montreal hay No. 3, per ton, car lots, \$12 to \$13.50.

POTATOES AND BEANS.

Potatoes are decidedly firm, wholesalers quoting them at \$1.70 per bag. The firmness of the market in the United States in attractive market for some of Canadian potatoes. Beans, foreign, hand-picked, bushel, \$1.75.

FEEDS.

Wholesalers are giving the following prices for feed at country points:—

Alaska, No. 1, fancy, 100, \$11.75 to \$12.50.

do, No. 1, ordinary, 100, 10.00 to 11.25.

do, No. 2, per bush, 7.75 to 10.25.

do, rejected, per bush, 6.75 to 8.75.

do, No. 3, per bush, 4.00 to 7.00.

do, rejected, per bush, 1.00 to 1.50.

Red clover, No. 1, 100, 11.00 to 12.50.

do, No. 2, 100, 10.00 to 11.50.

do, No. 3, 100, 9.00 to 10.50.

do, rejected, bush, 2.50 to 3.50.

do, rejected, bush, 1.00 to 1.50.

do, No. 2, per cwt., 8.00 to 9.00.

do, No. 3, per cwt., 6.00 to 7.00.

do, rejected, per cwt., 3.50 to 5.00.

Flax, bush, 10.00 to 11.00.

EGGS AND POULTRY.

Fresh gathered eggs of quality are becoming scarce on local markets and specials are increasing in demand at ad-

vancing prices. The cold wet weather has given production a sharp setback. Storage eggs are coming into more general use, but the movement reported so far is slow. Exporters claim that the market for Canadian storage would be greatly strengthened if they could obtain sufficient ocean space. Country prices now ruling are from 40¢ to 45¢ for ordinary run and 45¢ to 46¢ for circle eggs. Wholesale prices to retail trade for eggs, ex-carbon, are: 40¢ to 45¢.

Receipts of live and dressed poultry have been much heavier during the week, although receipts are much lower than at this season last year, with prices ruling somewhat higher.

Live weight. Dressed. Chickens, spring, 15c to 16c; 25c to 30c; Hens, under 4 lbs., 15c to 16c; 25c to 30c; Hens, over 4 lbs., 16c to 17c; 25c to 30c; Ducks, 15c to 16c; 25c to 30c; Turkeys, 20c to 25c; 25c to 30c; Geese, 15c to 16c; 25c to 30c.

DAIRY PRODUCE.

Wholesalers differ in their opinions as to the effect the entry of oleomargarine will have on the butter market. It is the opinion of some that it will lessen the production, while others believe it will not affect the market materially one way or the other. At country points wholesalers are paying 42¢ to 43¢ for creamery solids; creamery prints, 42¢ to 44¢; butter, 25c to 40c. Prices to the retail trade are: Creamery solids, 42¢ to 44¢; creamery prints, 42¢ to 44¢; choice dairy prints, 42¢ to 44¢; ordinary dairy prints, 38c to 39c; bakers', 38c to 39c.

Cheese quotations are: New, large, 25c to 26c; twin, 25c; 25¢ to 26¢; Cheddar, large, 25c to 26c; twin, 25¢ to 26¢.

LIVE STOCK QUOTATIONS.

Sixty-three hundred head of butcher cattle were on sale on Monday, and, in addition, heavy shipments came west direct to local shippers. As a consequence the demand was not very keen, and prices were ruled by the local supply per hundred on all medium and common cattle. While choice cattle were very scarce they barely held steady, and \$11 was about the top price paid during the week for a straight load. The bulk of the cattle coming on to the market do not show sufficient quality to command a high price, and it was the cattle of this class that suffered the most severe cut in value during the balance of the week. Cows of quality were in good demand and sold at steady prices, while calves were steady at last week's quotations. No change in the offerings were of bologna grading, and sold from \$6 to \$7 per hundred. The bulk of the offerings for stockers and feeders was slow throughout the week, and prices were from \$5 to \$6 per hundred. The market for lambs remained fairly stationary. Hogs on the Monday market were largely contracted for at last week's prices, but those offered on the open market sold from \$16.50 to \$17, and one lot at \$16.46. On Tuesday the bulk sold at \$17, while on Wednesday and Thursday the prevailing price was \$16.75, only an odd lot moving at \$17.

Quotations:—

Choice export steers, \$11.50 to \$12.50.

Butcher's choice handy, 10.25 to 10.50.

do, good, 9.50 to 10.00.

do, medium, 8.50 to 9.00.

do, common, 7.25 to 7.75.

Butcher's bulls, choice, 9.00 to 9.25.

do, medium, 8.50 to 8.75.

do, good, 8.25 to 8.50.

do, medium, 7.50 to 8.00.

Butcher's choice cows, 9.00 to 9.25.

do, medium, 8.50 to 8.75.

do, good, 8.25 to 8.50.

do, medium, 7.50 to 8.00.

Feeders, 7.00 to 7.25.

Stockers, good, 6.50 to 7.00.

do, medium, 5.50 to 6.00.

Cows, 5.25 to 5.75.

Milkers, good to choice, 10.00 to 12.00.

do, com. and medium, 8.00 to 10.00.

Calves, choice, 12.00 to 15.00.

do, medium, 10.00 to 12.00.

do, good, 8.00 to 10.00.

do, hay cut, 15.00 to 18.00.

Spring lambs, cwt., 15.00 to 18.00.

do, heavy and bucks, 7.50 to 9.50.

Cans, 15.00 to 17.00.

Hogs, fed and watered, 15.00 to 17.00.

do, off cut, 17.00 to 19.00.

Calves, 15.00 to 17.00.

Less \$1 to \$2 on light or thin hogs; less \$2 to \$3 on sows; less \$4 on stags; less \$5 to \$1 on heavy.

At Montreal.—Receipts of cattle during the week constituted a record for the past two years, there being over 6,000

## DISPERSION SALE

OF REGISTERED

21 HEAD **HOLSTEINS** 21 HEAD



Including our herd sire, EVERGREEN  
ADGERSK TEAK, No. 18,478, born January  
15th, 1913, whose dam and sire's dam average  
29.65 lbs. in 7 days. At the

ROYAL HOTEL STABLES, TILLSONBURG, ONT.

ON

TUESDAY, NOVEMBER 6th, 1917

POSITIVELY NO RESERVE. Tillsonburg is reached by M.C.R.,  
G.T.R., C.P.R., and Wabash Ry.

WRITE FOR CATALOGUE.

W. J. THOMPSON,

R. R. No. 4,

PORT ROWAN,

ONT.

Moore, Dean &

Rutherford,

AUCTIONEERS.



## PUBLIC AUCTION SALE

As I have disposed of my farm I will offer my small but choice  
herd of PURE BRED HOLSTEINS, consisting of about

20 Friesies and Several Bulls

ON

WEDNESDAY, NOVEMBER 28th, 1917

at Maple Grove Stock Farm

R.R. No. 1, TAVISTOCK, ONT.

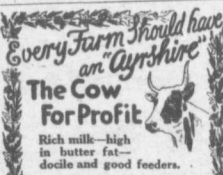
These animals are of the choicest blood lines of my former herd,  
and exceptionally fine individuals.

All Other Farm Stock and Farm Implements Will also be Sold.  
This announcement will appear only once, so REMEMBER THE  
DATE AND PLACE—November 28th, at the old Maple Grove Stock  
Farm, Tavistock, Ont.

Catalogues are now ready. Apply for one and study the excep-  
tional breeding and liberal terms of sale.

Trains will be met at Tavistock and New Hamburg on morning of  
day of sale.

T. MERRITT MOORE, H. BOLLERT,  
Auctioneer R.R. No. 1 Tavistock, Ont.



Rich milk—high  
butter fat—  
docile and good feeders.

WRITE W. F. STEPHEN, Secretary  
CANADIAN AYRSHIRE BREEDERS' ASSN.  
BOX 508—HUNTINGDON, QUE.

## Three Choice Ayrshires

One cow, registered Ayr-  
shire cow. Also her two  
daughters, aged 2 and 3  
years, respectively. All three  
due to freshen in November.  
All are of the richest breed-  
ing and in the pink of condi-  
tion. Will sell at a bargain  
for quick sale.

\$450

BUYS THE LOT

F.O.B. Delta Station, Ont.

W. C. STEVENS

Philpville Ontario



The Leading R. O. P. Herd  
Large Cows, Large Testes, Large Re-  
cords, High Testers, Choice Young  
Bulls and Bull Calves and a Few Cows  
for sale.

WINDSOR, ONT. R. O. P. 100 MARKFIELD, ONT.

Please mention Farm and Dairy  
when writing advertisers.

## PEACH BLOW AYRSHIRES

Young Stock for sale, always on hand (both sexes), from high-testing  
pure producers. Good udders and large test. A special feature of  
these young sires ready for service. Get particulars of these if you  
need a sire. R. T. BROWNLEE, Peach Blow Farm, HEMMINGFORD, Que.