



3425 3425



712 712

last year's gowns made of light-weight striped cheviot was utilized, the patterns used being dress No. 3425, which costs 10d. or 20 cents, and jacket No. 712, price 7d. or 15 cents. The dress skirt is plain and full and is gathered to the plain waist, which we made more ornamental by adding a full portion of blue silk gathered at the neck and reaching to the waist-line, where it is turned under to droop with blouse effect. This full portion reaches to the under-arm seams and falls rather deeper than the waist-line in front, from which its lower edge slopes gradually upward at the sides. The collar of the dress is omitted, the neck being plainly bound. The zouave jacket is made of the cheviot and

has a straight collar, the ends of which slightly overlap at the front. The edges are trimmed with blue-and-gold braid, the braiding being done in rather large loops and extending all round the jacket and across the collar. This dress was a surprising success.

For "very best" a brown-and-fawn mixture was selected and made up by pattern No. 4009, which costs 1s. 6d. or 35 cents. As

Edna is quite slender, loose effects are very becoming to her. The skirt is trimmed at the top of the hem with parallel rows of brown braid. The body consists of a blouse and Figaro jacket. The blouse is made of brown Surah silk, and under the turnover collar is arranged a brown silk scarf, which is bowed most becomingly in front. The Figaro jacket has narrow lapels above the bust and is braided with brown soutache. The hat to be worn with this dress will harmonize with any of Edna's other frocks. It is a light-fawn chip trimmed with fawn and brown velvet ribbon and with two feathers, one fawn and the other brown, that stand saucily at the back. Tan glacé gloves complete a really charming outfit.

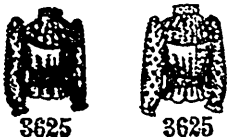
A short jacket for Spring wear was made of gray broadcloth, which was sponged before being made up. The pattern used was number 4449, which costs 10d. or 20 cents. The jacket is made without lining, but all the seams are neatly finished with gray binding made expressly for this purpose. The simple little garment is closed in double-breasted style with white pearl buttons, and the only ornamentation is supplied by rows of machine-stitching.

Annie, the acknowledged beauty of the family, was next on the list. This little lady is a bit of a gipsy, with coal-black hair, saucy black eyes, and cheeks the color of the "red, red rose." Red silk-and-wool Lansdowne was chosen for her good dress, which was made by pattern No. 4282, price 10d. or 20 cents. The full, round skirt is finished at the bottom with a hem, above which five rows of very narrow black velvet ribbon are applied. The top of the skirt is gathered and joined to the body, which has added jacket-fronts that pass into the shoulder and under-arm seams. The jacket fronts are each trimmed with three rows of velvet ribbon, and rosettes of similar ribbon decorate the body between the jacket fronts. The half-sleeves are each finished with a band encircled with parallel rows of ribbon that are formed in bows at the back of the arm.

With the dress is worn a pretty guimpe of black India silk cut by pattern No. 3625, which costs 5d. or 10 cents. The upper part of the guimpe is a full, seamless yoke, the fulness being shirred at the upper and lower edges. The full sleeves are gathered to narrow bands at the wrists. The dress may be worn with a white guimpe, if preferred; but the black and red combination was particularly attractive and becoming in this instance. The hat is a black straw trimmed with red and black ribbon and with three fluffy cream-white pompons placed at the back in a bow of the ribbon.



4282 4282



3625 3625

Pattern No. 3813, which costs 1s. or 25 cents, was chosen for making a coat of dark-blue light-weight cloaking. The coat, which is delightfully childish in effect, has an ornamental yoke, and a plaited front and back that falls in well pressed plaits to the edge. The yoke and collar are made of blue velvet decorated with blue and gold metallic braiding. The stylish sleeves are finished with velvet cuffs ornamented with braiding. The skirt reaches to the bottom of the dress.

For wear on cool days light-weight flannel in a gray-and-brown mixture was purchased, and the costume was fashioned by pattern No. 3932, which costs 1s. or 25 cents. The

plaza skirt is joined to a high-necked, sleeveless waist, the upper part of which is trimmed in V shape with narrow brown ribbon. The blouse is folded back in broad revers, revealing the waist decoration; and the revers are trimmed with ribbon, as are also the cuffs of the sleeves. The sailor collar is deep and square at the back and laps upon the upper part of the revers, beneath which its tapering ends disappear. The lower edge of the blouse is drawn in by an elastic.

Two cotton dresses were needed for school wear—one with a lining for cool weather, and one without lining for warm days. The first we made of blue-and-white plaid gingham in combination with plain blue chambray, the shaping being done by pattern No. 3554, which costs 1s. or 25 cents. The full skirt is gathered at the top and joined to the baby waist at the belt. The upper part of the waist is a square yoke of the plain material, to which are gathered full lower-ports. About the waist is a girle of chambray laced both back and front with white cord, lined stiffly, and boned to keep its shape. Cuffs of chambray complete a most dainty garment.

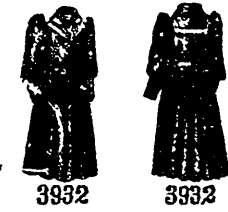
For the lighter suit, dress No. 3880, which costs 10d. or 20 cents, and guimpe No. 4012, price 7d. or 15 cents, were used. The guimpe, for which India silk was selected, has a fancy yoke, and full sleeves gathered to embroidered bands at the wrists. The dress was made of green-and-white striped zephyr. It is shaped in deep, square outline both back and front, and Bertha frills rise high on the shoulders. Herring-bone stitching done with white outlining cotton decorates the edges of the frills and the bands completing the short, puffy sleeves.

As Annie has not yet learned to be altogether careful of her school dresses, white aprons are still needed, and two of these protective garments were made for the little lady. For one, pattern No. 4446, which costs 10d. or 20 cents, was used. This apron as a prettily embroidered yoke, to which are joined full skirts of India linen. Sashes of the linen are plaited at the front ends, included in the seams at the waist-line and arranged in a bow at the back. A deep hem at the bottom and an edging of narrow embroidery at the sash ends and at the yoke, neck and arm's-eye edges complete the garment.

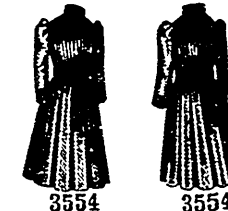
The other apron was cut by pattern No. 4418, which costs 7d. or 15 cents, the material being barred muslin. The full skirt is joined to a sleeveless body, which is cut in deep, oval outline at the neck. The neck and arm's-eye edges are decorated with narrow embroidered edging, and three rows of insertion are stitched to the front of the body. The material may be cut away from beneath the insertion or not, as may be considered desirable.



3813 3813



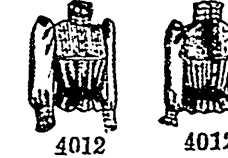
3932 3932



3554 3554



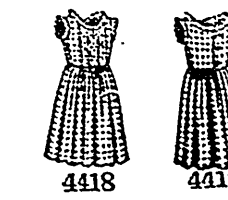
3880 3880



4012 4012



4446 4446



4418 4418