

lier fashion at the back of the arm. At the neck is a close-fitting standing collar overlaid with net. The basque is lengthened by two ripple skirts of silk of unequal depth, the lower one extending well down upon the hips. The skirts are headed by a band of rich jet passementerie, and two bands of similar trimming are set higher up on the basque.

Very elegant then-tre gowns may be developed by the mode in satin, Bengaline, faille, brocade or cr  pon, with cr  pe de Chine, beaded net or embroidered mousseline de soie for the vest. Handsome trimming may be supplied by jewelled, jet or silk floral passementerie, gimp, galloon, Persian bands, etc.

The small velvet hat is stylishly trimmed with jet, velvet, cr  pon rosettes and a fancy feather pompon.

FIGURE NO. 506 D.—
LADIES' VISITING
TOILETTE.

(For Illustration see
Page 618.)

FIGURE NO. 506 D.—This consists of a Ladies' waist and skirt. The waist pattern, which is No. 6599 and costs 1s. or 25 cents, is in thirteen sizes for ladies from twenty-eight to forty-six inches, bust measure, and is given another portrayal on page 638 of this DELINEATOR. The skirt pattern, which is No. 6582 and costs 1s. 6d. or 35 cents, is in nine sizes for ladies from twenty to thirty-six inches, waist measure, and is shown again on page 639.

The toilette possesses an originality of design which will be especially appreciated by women who seek novel effects in their gowning. It is here shown to advantage in a unique combination of gray vicuna and black satin. The skirt, which is also illustrated at figure No. 493 D., where it is fully described, has a flounce of black satin that is partially revealed below the graceful over-skirt; and just above the edge of the over-skirt is applied a band

of black satin decorated at each edge with a piping of white satin. The waist is of the short, round variety and is lengthened styl-

ishly by a ripple skirt that flares in regulation fashion. The fronts are closed invisibly below the bust and flare widely above to reveal the dart-fitted under-fronts in deep V shape. The fulness below the bust is collected in plaits at each side; and to the flaring edges

of the fronts are attached black satin Restoration lapels, which overlap the sleeves and emphasize the broad-shouldered effect. The seamless back is separated from the fronts by under-arm gores and is smooth at the top, while the fulness at the waist-line is plaited nearly to a point at the center. The seam joining the waist and ripple skirt is covered with a band of black satin edged with white satin pipings, the ends of the band being bowed at the center of the front. The mutton-leg sleeves, which are arranged upon smooth linings, droop picturesquely on the shoulders and present innumerable soft folds and wrinkles below. They are banded at the wrists with folds of black satin edged with white pipings; the lapels are decorated to correspond, and the exposed portions of the under-fronts are made fanciful by evenly spaced bands of satin. A satin collar in close-fitting standing style is at the neck.

The toilette will make up exquisitely in any of the silk-and-wool novelties which are now offered in so many handsome varieties and at prices to suit all purses. Particularly attractive gowns may be developed in combinations of hopsacking and satin or of camel's-hair and Bengaline, with galloon, gimp, passementerie, etc., for decoration. The small, close-fitting hat is stylishly adorned with jet, ribbon and feathers.

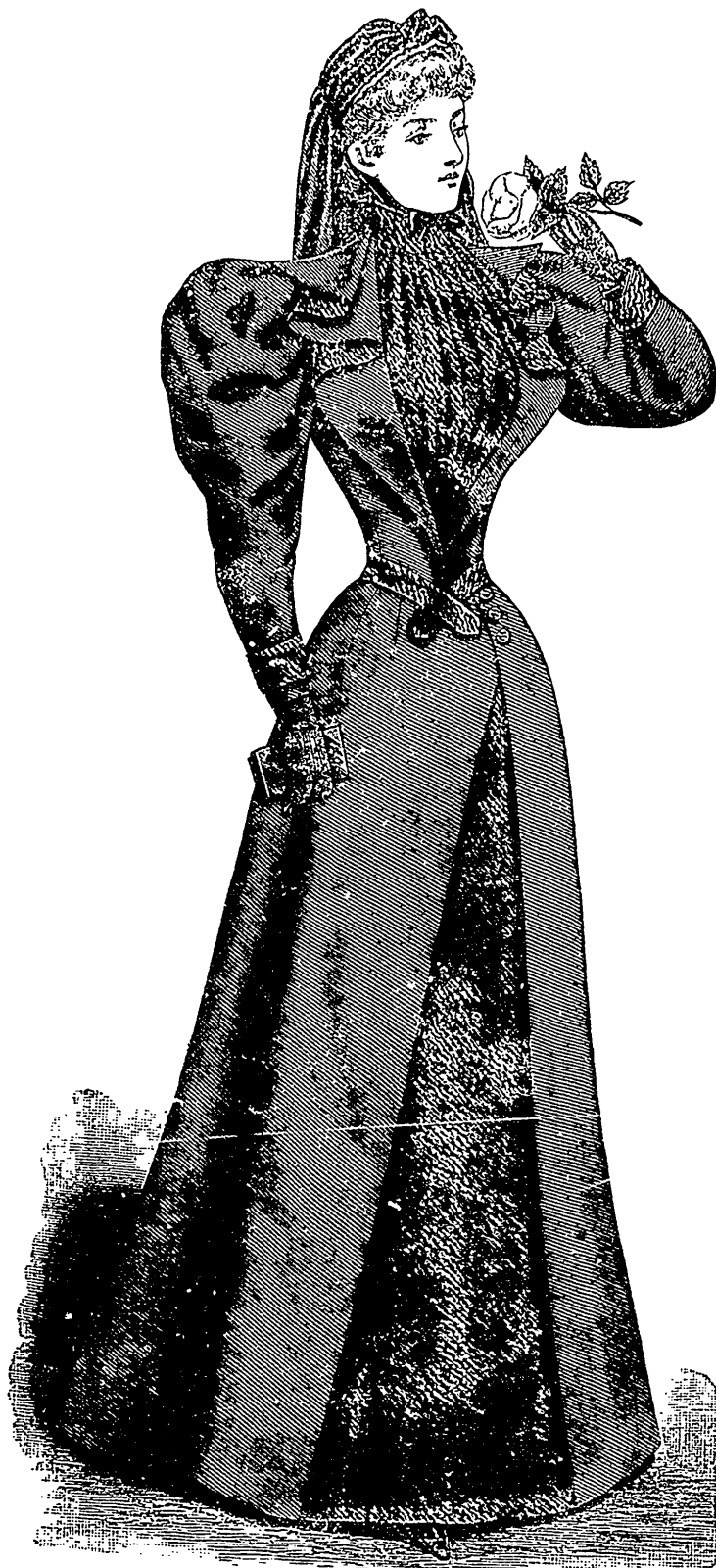


FIGURE NO. 511 D.—LADIES' MOURNING TOILETTE.—This consists of Ladies' Basque-Waist No. 6571 (copyright), price 1s. or 25 cents; and Skirt No. 6584 (copyright), price 1s. 6d. or 35 cents.

(For Description see Page 621.)

FIGURE NO. 507 D.—
LADIES' COAT.

(For Illustration see
Page 614.)

FIGURE NO. 507 D.—This illustrates a Ladies' coat. The pattern, which is No. 6610 and costs 1s. 6d. or 35 cents, is in thirteen sizes for ladies from twenty-eight to forty-six inches, bust measure, and is given another portrayal on page 630.