

THE STORE for BIG VALUE

Big Value in Men's Suits
Men's Straw Hats
Men's Underwear
Men's Furnishings
Linoleum
Lace Curtains
Curtain Nets
Crepe Dress Goods
Voile Dress Goods
Ladies' Underwear
Whitewear
Ladies' Waists
Ladies' Fancy Furnishings

SEE THE BIG VALUE IN MEN'S SUMMER SHIRTS
HIGHEST PRICES FOR BUTTER AND EGGS.

CHAS. DEAN

MRS. W. A. CURRIE MILLINERY PARLORS

SYMES STREET,
GLENCOE Phone 25

WARDSVILLE
ONTARIO

RAILWAY AND POSTAL GUIDE. GRAND TRUNK RAILWAY.

Main Line.
Eastbound—No. 12, mail and express to London and intermediate points, 3:27 a.m.; No. 11, express to London and intermediate points, 3 p.m.; No. 10, Eastern Flyer, for Toronto, Montreal, etc., 2:30 p.m.; No. 10, local accommodation to London, 10:10 p.m.
Westbound—No. 11, local mail and express, 7:30 a.m.; No. 31, way freight and passenger, 10:15 a.m.; No. 11, express from London and points east for Detroit, 12:25 p.m.; No. 11, local mail and express, 6:57 p.m.; No. 15, International Limited, from Toronto and east for Detroit, 5:45 p.m.
No. 11, 16, 17 and 18, Sundays included.
Wabash and Air Line.
Eastbound—No. 32, mixed, local points to St. Thomas, 9:30 a.m.; No. 2, Wabash, 12:25 p.m.; No. 34, way freight and passenger to St. Thomas, 4:20 p.m.
Westbound—No. 33, way freight, St. Thomas to Glencoe, 9 a.m.; No. 33, mixed, local points, St. Thomas to Glencoe, 2:30 p.m.; No. 3, express, 4:25 p.m.
No. 2 and No. 5, Sundays included.
King's Court Branch.
Leave Glencoe for Alvinston, Petrolia, etc., connecting for Sarnia, Tipton and points west, No. 35, mixed, 1:30 a.m.; No. 47, passenger, 3:10 p.m.; No. 37, mixed, 6:40 p.m.
Arrive at Glencoe—No. 15, passenger, 7:05 a.m.; No. 19, express, 2:45 p.m.; No. 37, mixed, 5:45 p.m.
CANADIAN PACIFIC RAILWAY.
Eastbound—No. 61, Sundays included, 12:27 p.m.; No. 62, 5:10 p.m.
Westbound—No. 67, 8:57 a.m.; No. 68, Sundays included, 8:27 p.m.
GLENCOE POST-OFFICE
Mails closed—G.T.R. East, 9:00 a.m.; G.T.R. West, 8 p.m.; London and East, 2:40 p.m. and 7 p.m.
Mails received—London and East, 8 a.m.; G.T.R. East, 7 p.m.; G.T.R. West, 9:45 a.m.

CANADIAN PACIFIC S. S. LINE

Donaldson S. S. Line
Allan S. S. Line
White Star S. S. Line
Royal S. S. Line

Tickets issued both outward and prepaid for the above line.
R. CLANAHAN - Ticket Agent
GLENCOE

We carry a Full Line of
Tin, Enamel and Galvanized Ware, Sinks, Bathtubs, etc.

Plumbing, Furnace-work, Roofing, Eavetroughing, Repairing, etc., done by a Practical Mechanic.

J. M. Anderson
Tinsmith Plumber



SOON PAY FOR THEMSELVES
Manufactured by the
De Laval Dairy Supply Co., Ltd.

Get particulars from
NEIL GRAHAM
Agent - Glencoe



When Preserving

Use LANTIC Sugar. Because it dissolves quickly, it will not scorch or burn in the kettle. LANTIC Sugar is refined from cane only, granulated extra fine and comes to you clean and pure from refinery in original packages. 2 lb. and 5 lb. cartons and 10 lb. and 20 lb. bags. 100 lb. bags coarser granulation. Weight guaranteed. Buy in original packages and look for the LANTIC Red Ball on each package.

Send your address and small Red Ball Trade Mark from bag or top end of carton and we will mail you book of 50 assorted Fruit Jar Labels—printed and gummed ready to put on the jars.

Lantic Sugar

Atlantic Sugar Refineries Limited, MONTREAL, QUE. ST. JOHN, N. B.

PERSONAL MENTION

The Junior Auxiliary of St. John's Church will hold their sale of work on the grounds of the rectory Saturday, July 24th, from 2 to 6 p.m. Refreshments will be served and a sale of useful and fancy articles made by the members will be held. A candy booth will provide its attractions. All will be welcomed most cordially. 70-1

The Methodist Sunday School and Rebekah Lodge, O. O. F., of Melborne, will hold their annual excursion to Port Stanley on Tuesday, July 27th. Train leaves Alvinston 8:02, Walkers 8:12, Appin Road 8:20, Melborne 8:32. Appin Methodist Sunday School and Epworth League will accompany this excursion on their annual outing.

Glencoe Orangemen and others from the town and vicinity attended the Twelfth of July demonstration in London on Monday, when it is estimated 10,000 were in parade, with twenty five and drum corps figuring in the procession. Speechmaking and an elaborate programme of sports marked the celebration in Queen's Park. The speeches were of a patriotic nature.

The big rains and high temperature of the past few days have made a noticeable improvement in all kinds of vegetation, and those who were delayed in their hay cutting are not likely to have reason for regret, as they will have a better crop, especially of timothy. Some wheat fields were ready for the reaper on Monday and Tuesday and will be in a few days. The yield will be heavy.

A lawn social in connection with St. Alban's church, Appin, will be held on John Cramp's grounds Monday evening, July 19. Rev. R. W. Norwood and local ministers will address the gathering, and music will be furnished by the Misses Taylor and Edwards, of London; the male quartette of St. John's church, Glencoe; the Melborne orchestra, and local talent. Miss Daniels, of Lobo, will recite.

An interesting game of lacrosse was played here on Wednesday afternoon of last week between the Oneida Indian team and the Glencoe team, resulting in defeat for the visitors 5 to 1. The Glencoe lineup was as follows: J. Martin, goal; George Richards, point; Wm. Burr, cover point; J. M. Ferguson, defence; A. Davenport, centre; A. F. Johnston, home; R. Roberts and C. G. Campbell, Ed. Mayhew, inside. The Glencoe club has only recently been organized but is taking right hold of the game. Chas. Davidson is manager and C. Bodkin captain. It is expected that return game will be played with Oneida on Friday. A game is also being arranged with London.

The funeral of the late Malcolm C. Campbell was held last Thursday afternoon and was attended by a large gathering. Service was held in the Presbyterian church and was conducted by the pastor, Rev. Geo. Weir. The Odd Fellows Lodge, of which the late Mr. Campbell was a member, held a large assembly of friends, Bro. J. W. Sheppard officiating, when Margaret, daughter of Mrs. Robert Clark, of Appin, Ontario, became the bride of A. A. Lawton, of Highland Park, Michigan.

The bride wore a gown of white silk crepe de chene, with lace and pearl trimming, and carried a bouquet of white roses. Her veil was caught up with orange blossoms. A cousin of the bride, Miss Katherine Ferguson, of Alvinston, acted as bridesmaid. She was attired in a white lace voile dress, with white satin sash, and wore a white transparent brim satin hat and carried an arm bouquet of pink roses. The groom was supported by G. A. Conn, of Highland Park. Evelyn and Marion Lyda, the bride's nieces, acted as flower girls. The happy couple spent their honeymoon with friends in Strathroy, Alvinston and at Appin, Ontario, and will be at home at 241 Windermere Ave., Highland Park, Michigan, after August 1st.

SPECIAL NOTICES

Cash for eggs.—G. A. McAlpine, 307 Old papers for sale at the Transcript office.

Best Manitoba flour for sale at McLachlan's Bakery. 901

Raspberries for sale. Order early.—Mrs. John Gould, phone 3942.

Large quantity of road and cement gravel free.—William Squire, Glencoe.

See the new Overland car. It will surprise you.—S. Humphries, Agent, Glencoe.

The Transcript is agent for all the daily papers. Let us remit your subscription.

Farmers, take your butter and eggs to Henry's grocery store and get the best prices.

Don't forget J. B. Henry's new grocery store. Everything you want you can get there.

Two hustlers wanted. Salary and commission. Apply to W. Robertson, Mount Brydges.

The Overland is the simplest and most up-to-date car on the market.—S. Humphries, Agent, Glencoe.

For sale—pen of twenty thoroughbred White Leghorns, Ferris strain. Apply to M. L. Farrell, Glencoe, 72.

"Rough on Rats" clears out rats, mice, etc. Don't die in the house. 15c and 25c at drug and country stores.

Urgently disposed of my business, a prompt settlement of all accounts due is urgently requested.—Mary D. McAlpine.

Fresh extracted clover honey in 5 and 10-lb. pails, also some bee supplies for sale.—Bessie McRae, Fairview Place, Appin Road; phone 55.

Mrs. M. C. Campbell wishes to express her thanks to friends and neighbors for kindnesses and sympathy extended to her in her bereavement.

All notices in this column are strictly cash. If orders are telephoned The Transcript, kindly arrange to pay the amount the first time you are in town, so they will not have to be carried through the books.

Farmers' sons take great interest in the Feeding Hogs for Profit Competition, and in the 20 competitions last year the average net profit of the 20 winners was \$6.40, while the average of the first five winners was \$10.10 per hog, and that of the lowest five \$4.53.

A lady writes: "I was enabled to remove the corns, root and branch, by the use of Holloway's 'Corn Cure.' Other cures have tried it have the same experience."

In the dairy herd competition, conducted by the Dairywomen's Association of Western Ontario in 1914, the first prize herd produced 7,923 pounds per cow for six months from May to October.

Lawton-Clark.

A happy event occurred at Vinewood Ave. Church of Christ, Detroit, on Friday evening, June 25, before a large assembly of friends, Bro. J. W. Sheppard officiating, when Margaret, daughter of Mrs. Robert Clark, of Appin, Ontario, became the bride of A. A. Lawton, of Highland Park, Michigan.

The bride wore a gown of white silk crepe de chene, with lace and pearl trimming, and carried a bouquet of white roses. Her veil was caught up with orange blossoms. A cousin of the bride, Miss Katherine Ferguson, of Alvinston, acted as bridesmaid. She was attired in a white lace voile dress, with white satin sash, and wore a white transparent brim satin hat and carried an arm bouquet of pink roses. The groom was supported by G. A. Conn, of Highland Park. Evelyn and Marion Lyda, the bride's nieces, acted as flower girls. The happy couple spent their honeymoon with friends in Strathroy, Alvinston and at Appin, Ontario, and will be at home at 241 Windermere Ave., Highland Park, Michigan, after August 1st.

The Ideal Vacation Route.

The Canadian Pacific conveniently reaches Point St. Barthelemy and Pickett's River, Severn River, Muskoka Lakes, Kawartha Lakes, Rideau Lake Ontario resorts, etc. If you contemplate a trip of any nature consult Canadian Pacific ticket agent or write M. G. Murphy, District Passenger Agent, Toronto. 70-3

Worms derange the whole system. Mother Gray's Worm Expeller. Finlay McDiarmid, George Elliott, M. P., and D. C. Ross, M. P. You can't afford to miss it.

Eliminate the Male.

The Canadian egg trade is losing several dollars each year, on account of neglect, carelessness and lack of appreciation of the perishable nature of an egg.

Eggs are gathered on the farm once or twice a day, and held at the house until it is convenient to take them to market. Eggs from hidden nests are often added to these. These eggs may be stored in damp places, and then become moldy, or if stored with vegetables, etc., they take on the flavor of the vegetables. The country storekeeper sometimes places eggs in the window. The eggs stand on the railway platform in the dust, while the sun beats down. The hot freight cars in which eggs are sometimes shipped are almost perfect incubators. When the housekeeper in town buys the eggs they are often put on the top shelf of the pantry, the hottest place in the house. We see that the egg passes through a very circuitous route before it reaches the consumer.

The object of an egg is that it will hatch a chicken. All that is necessary for this to be accomplished is proper conditions. The hen sitting on the nest for a half hour after laying may cause the germ to start growing, or the hot sun on an egg for an hour may cause this. The hot sun on the station platform continues the good work, and again it goes on in the box car. The only reason that the egg is not a chicken is because the heat has not been continuous.

It is estimated by experts that two eggs out of every dozen are unfit for food, or about 17 per cent. This percentage is estimated to be due to the following: Germ commenced to grow, five per cent.; rotten eggs, three per cent.; loss from shrunken and stale eggs, five per cent.; dirty eggs, three per cent.; moldy and had flavored eggs, one per cent.

The first eight per cent. can be eliminated by keeping the male bird away from the flock. Now that the hatching season is over, it is highly desirable that the males not intended to be kept should be sold and the others shut up. By doing this over one-half of this 17 per cent. loss can be avoided, as an egg will not grow unless fertile. Dirty eggs cause a loss of three per cent. and this can be avoided by providing clean nests. The moldy eggs are usually the result of keeping the eggs stored in a damp place, dirty nests or washing the dirty eggs. Eggs should never be washed as this washes the mold germs through the shell and starts the egg on its way to decomposition.

It is the duty of every egg producer to observe these few rules and help eliminate this unnecessary waste.

Asthma Brings Misery, but J. D. Kellogg's Asthma Remedy will replace the misery with welcome relief. Inhaled as smoke or vapor it reaches the very inmost recesses of the bronchial passages and soothes them. Restriction passes and easy breathing returns. If you know as well how this remedy would help you as do thousands of grateful users, there would be a package in your home tonight. Try it.

Vegetable growers in Ontario are warned of the necessity of developing a home seed supply, since the former sources of supply, chiefly Germany and Holland, have been cut off.

Haying Time!

The time has come when you must look over your hardware wants, such as Hay Forks, Hay Slings, Rope, Machine Oil, etc. Our stock is complete in every line, and prices right.

BINDER TWINE

The celebrated Plymouth Twines, Gold Medal, Silver Sheaf, Green Sheaf. Get our prices.

THE FLIES

Protect your home with Screen Doors and Windows. Prices, \$1.00 to \$2.50.

FULL LINE OF Refrigerators, Ice Cream Freezers, Hammocks, Lawn Mowers.

JAS. WRIGHT & SON

PARIS GREEN SHERWIN-WILLIAMS PAINTS

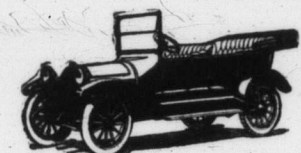
APPIN LUMBER YARD

We handle everything in the building line, including lumber, lath, shingles, lime, Pedlar roofing and siding, also fence posts and Beaver Board.

Contracts made for building: Quality first. Get our prices.

W. R. STEPHENSON APPIN, ONT.

"STUDEBAKER"



The one big argument for a Studebaker car is the fact that it is a Studebaker car.

That includes everything else—The Studebaker name is back of it—The Studebaker reputation is stamped upon it—From purely selfish motives Studebaker quality must be built into it.

GEO. A. PARROTT, AGENT - GLENCOE
Wait for the 1916 Studebaker

DON'T FORGET Glencoe's New Grocery Store

Opens on Thursday, July 15

On and after July 15 we will be able to supply you with a full line of Groceries, Fruits, Vegetables, and, in fact, everything in the grocery line.

We respectfully solicit your patronage.

J. B. HENRY

Western University, London

ANOTHER GREAT ADVANCE

Income Doubled—now \$75,000

Another Large Addition to Faculty and Equipment in Arts and Medicine. Greatly Increased Enrollment in View.

Write for particulars to
E. E. Braithwaite, M.A., Ph.D.
PRESIDENT.

Western Fair London Canada

Sept. 10th - 18th 1915

\$30,000.00 in Prizes

and Attractions

Prizes increased this year by \$3,000.00. Excellent Program of Attractions Twice Daily. Two Speed Events Daily. Fireworks Every Night. New Steel Grandstand. Midway Better Than Ever.

Music by the Best Available Bands

SINGLE FARE OVER ALL RAILWAYS West of Toronto, and Fare and One-Third from outside points

Prize Lists, Entry Forms and all information from the Secretary

W. J. REID, President A. M. HUNT, Secretary