

# Financial And Commercial

## OTTAWA SENDS BACK YEAR MADE A BAD GOLD TO NEW YORK START FOR MARINE UNDERWRITERS

Two and a half million re-exported—Some favorable factors in yesterday's market.

New York, Feb. 10.—Apart from constant pressure against the coal shares which at one time showed substantial losses on rumor of an impending decision by the Interstate Commerce Commission, today's stock market was strong and replete with interesting developments. Chief among these was the re-importation of \$2,500,000 American gold from Ottawa, where it had been deposited by our bankers in the early weeks of the European war. The importance of this transaction, as seen by local financial interests, lies in the fact that it is the first indication of a return of the precious metal to the centre since the beginning of the foreign crisis. More imports of gold from the same source are said to be under negotiation.

Other encouraging factors were the large increase in January tonnage reported by the United States Steel Corporation, advances in finished steel and iron, and new railway financing and equipment purchases. Approval of the new \$100,000,000 bond issue by the New York Central directors on terms more advantageous to the company than were originally outlined was reflected in the partial recovery of the stock.

A considerable part of the day's gain in steel and some of the automobile shares ascending to high records, with continued demand for American Smelting, International Lead and Pittsburgh Coal, copper and preferred. The last named scored a maximum gain of seven points on rumors that it had been decided to restore the dividend to its full rate and add a part of the accrued cumulative dividend. Department Store securities also figured in the movement among obscure issues.

Foreign exchange fell to yesterday's low rate for cables in London, but recovered later on buying of bills, that movement being facilitated by the approaching holiday. Local money rates hardened slightly on similar reason. London's markets were steady, except the American division, where a weaker tone prevailed. The Imperial Bank of Germany added almost \$5,000,000 to its gold holdings. Bonds were lower, with heavy declines in low priced issues. There were numerous sales for future delivery, presumably foreign account. Total sales, par value, \$1,660,000.

### MONTREAL CASH SALES

Montreal, Feb. 10.—  
Brazilian—5.54, 20.64.  
Textile—6.64.  
Monopoly—10-21.  
Bell Telephone—30-40.  
Ogilvie—10-116, 5-116.  
Lake of Woods—1-129.  
Hollinger—100-22.

## World's Shipping News

### MINIATURE ALMANAC.

FEBRUARY PHASES OF THE MOON									
Last Quarter	7th	11h.	11m.						
New Moon	14th	0h.	31m.						
First Quarter	21st	10h.	58m.						
Day of Mth.	Sun	Moon	H. Water	A. M.	L. Water	P. M.	L. Water	P. M.	L. Water
10 Wed	7.37	5.40	8.03	20.45	1.51	14.31			
11 Thu	7.36	5.41	9.05	21.46	3.01	15.36			
12 Fri	7.35	5.42	10.07	22.47	4.06	16.42			
13 Sat	7.34	5.44	11.07	23.46	5.02	17.46			
14 Sun	7.32	5.45	11.46		5.51	18.13			
15 Mon	7.30	5.47	0.10	12.31	6.34	18.55			

### OUT OF THE ICE

The steamer Cape Breton which has been locked up in the ice has been freed and is due here this morning with a cargo of coal.

### RECENT CHARTERS

British schooner, 723 tons, timber, Gulf to West Britain, private terms, prompt. British bark, 1,350 tons, dead, Halifax to West Britain or East Island, 90s, prompt.

### BIG YACHT WRECKED

New Orleans, La., Feb. 8.—Steam yacht Wakiva, which went ashore on the jetties at Tampico, Mexico, last month, has broken up and is a total loss. The Wakiva was a 417 ton steel hull vessel, 165 feet in length and was built in Leith, Scotland, in 1903, at a cost of approximately \$180,000. She was owned by F. L. Doherty, a wealthy oil operator of Los Angeles, Cal.

### THE KENDALL CASTLE

The British steamship Kendall Castle, Capt. Harvey, arrived at Louisbourg on Saturday from London, Eng., after a fair passage across, taking twenty days from London. The Kendall Castle will go on charter with the Dominion Iron and Steel Co. The charterers expect to dock her at the freight pier house shortly after the general cargo of steel products from the plant for England.

### ST. GEORGE TO PACIFIC

The Vancouver World of Feb. 3 says there is a report current that the C. P. R. steamship St. George, operating between St. John, N. B. and Digby, N. S., will be dispatched to this coast this spring. The company planned to have its two new Princesses here for service this year, but the Admiralty saw fit to requisition them, and it is now rumored that the St. George will come to Victoria in order to allow the C. P. R. to carry out some of its plans. The St. George is a turbine vessel, and prior to her purchase by the Canadian

## YEAR MADE A BAD START FOR MARINE UNDERWRITERS

London, Feb. 10.—A serious list of marine casualties has marked the beginning of 1915. The year opened with the loss of the steamer Odessa, on the Shipwash, when bound from Rotterdam to New York with general cargo. This was followed by the foundering of the Danish steamer Bjergvin, of Lockal, with a valuable cargo for Gothenburg from New York, and by the sinking of the Astoria, at the mouth of the Mersey, by the dredger Joseph Thompson. The Astoria had a valuable cargo on board for Nantes and Bordeaux.

Jute shipments suffered heavily, as the Elswick Manor was on fire when discharging at Staten Island; the Bengal put in to Vigo with cargo on fire, and had to be beached before the outbreak could be subdued; and last of all, the Fulwell was sunk off the Portuguese Coast, after collision with the Anchor liner Massilia. The Fulwell was valued at \$35,000, and her cargo at about £80,000.

Several serious collisions were reported recently. The Bayamo was beached at New York, after collision with a steamer. The Cordova and Cromarty were both badly damaged by collision in the Downs; and the Colorado bound from Hull to New York, had to put back seriously damaged by collision off Yarmouth with the Romney. When lying at anchor in Barry Roads the Norwegian steamer Vindra was run into by the Giralda, and it was first reported that she had been sunk. It appeared later that she had only been badly damaged, and would be able to dock at Barry, while the Giralda had to be beached.

The P. and O. liner Nile struck a rock at Iwajima, in the Inland Sea, and sank in deep water, all hands and passengers being saved; and the Sierra liner Natalia, bound from Liverpool to Barcelona, was totally wrecked near Cape Villano. Some anxiety was expressed for the safety of the Elder Dempster liner Onitsha, which ran ashore on Coral Reef Island, one of the Isles de Los, near Konakry, and 30 gals was paid against total loss. Since then, however, the vessel has been floated.

## PRODUCE PRICES ON MONTREAL MARKET

Montreal, Feb. 10.—CORN—American No 2 yellow, 86 to 87.  
OATS—Canadian Western No. 2, 74; No. 3, 71; extra No 1 feed, 71.  
WHEAT—Man. spring wheat patents, 81 to 82; second, 76 to 77; strong bakers, 74 to 75; winter patents, choice, 83 to 84; straight rollers, 81 to 82; bags, 3 to 3.50.  
MAY—No 2, per ton, car lots, 18 to 19.  
POTATOES—Per bag, car lots, 50 to 52.

May—157%  
July—158%  
Close Winnipeg Oats.  
May—68%.

## SCANDINAVIAN RULERS WILL HOLD ANOTHER MEETING

Berlin, Feb. 10, (by wireless to Sayville).—The overseas news agency says that, according to a Copenhagen despatch received in Berlin, the rulers of the three Scandinavian kingdoms will hold another conference this time to discuss the questions of floating mines, Germany's declaration of a sea war zone, and the British Admiralty's views as to the use of neutral flags.

## PORT OF ST. JOHN.

Arrived Wednesday, Feb. 10

Stmr Manchester Miller, 2,766 Musgrave Manchester, Wm Thomson & Co, general cargo.  
Schr Lawson, 274, Dignon, New York, coal.

## BRITISH PORTS.

Kinsale—Passed Feb. 8, str Eagle Point, Boston for Liverpool.  
Liverpool—Arr Feb 8, strs Canadian, Boston; Manchester Exchange, Portland.  
Sld Feb 7, str Tuscania, New York. Liverpool—Arr Feb 7, str Durango, Chambers, St. Johns, Nfld; 8th, strs Granplan, Williams, St. John, N. B.; Canadian, Bullock, Boston; Manchester Exchange, Adamson, Philadelphia via Portland, Me.  
Sld Feb 7, str Tuscania, New York; 8th, str Eagle Point, Trinick, Boston.  
Kinsale—Passed Feb. 8, str Eagle Point, Lloyd, Boston for Liverpool.  
Isle of Wight—Passed Feb. 8, str Crown Point, Dunstan, Philadelphia for London.  
London—Arr Feb. 8, str Mascara, Limond, St. John, N. B.

## FOREIGN PORTS.

Newark—Arr Feb. 8, sch Kenneth C. Newport New York.  
Newport News—Arr Feb. 8, str Parthenia, St. John.  
Sld Feb. 8, str Athena, Glasgow.  
New York—Arr Feb. 9, tug Gypsum King, Coburn, Southwest Harbor, Me, towing barges Glooscap and Canada, from Windsor, N. S. with plaster.  
Portland—Arr Feb. 8, str Glenstar, New York; Eastington, Louisville, C. B.  
Providence—Arr Feb. 8, sch Sadie C. Sumner, Jacksonville.  
Vineyard Haven—Sld Feb. 8, schs Empress, Elizabethport for Halifax; Lawson, Perth Amboy for St. John, N. B.

## STOCK QUOTATIONS ON N.Y. EXCHANGE

(McDOUGALL & COWAN.)

	Open	High	Low	Close
Amal Cop	53 1/2	54 1/2	53 1/2	54 1/2
Am Beet Sug	77 1/2	78 1/2	77 1/2	78 1/2
Am Car Ry	44 1/2	45 1/2	44 1/2	45 1/2
Am Smelt	63 1/2	64 1/2	63 1/2	64 1/2
Anacosta	26 1/2	27 1/2	26 1/2	27 1/2
Am Tele	113 1/2	114 1/2	113 1/2	114 1/2
Atchafalca	13 1/2	14 1/2	13 1/2	14 1/2
Am Can	28 1/2	29 1/2	28 1/2	29 1/2
Balt and O Co	69	70	69	70
Brook Rap Tr	87	88	87	88
Chas and O	41 1/2	42 1/2	41 1/2	42 1/2
Can Pac	156 1/2	157 1/2	156 1/2	157 1/2
Erie Com	22	23	22	23
Lewish Val	133 1/2	134 1/2	133 1/2	134 1/2
Miss Pac	124 1/2	125 1/2	124 1/2	125 1/2
N Y Cent	54 1/2	55 1/2	54 1/2	55 1/2
Nor and West	101	102	101	102
Nor Pac	102 1/2	103 1/2	102 1/2	103 1/2
Penn	106 1/2	107 1/2	106 1/2	107 1/2
Pres and O	20	21	20	21
Reading Com	144 1/2	145 1/2	144 1/2	145 1/2
St Paul	86	87	86	87
Sou Pac	83 1/2	84 1/2	83 1/2	84 1/2
Sou Ry	15 1/2	16 1/2	15 1/2	16 1/2
Un Pac Com	119 1/2	120 1/2	119 1/2	120 1/2
U S Steel	41 1/2	42 1/2	41 1/2	42 1/2
U S Steel Pfd	103 1/2	104 1/2	103 1/2	104 1/2
Total sales	255,000			

## CHICAGO GRAIN AND PRODUCE

Chicago, Feb. 10.—Wheat No 2 red, 1.63 1/2; No 2 hard, 1.63 1/2 to 1.64.  
Corn—No 4 yellow, 74 1/2 to 75; No 4 white, 74 1/2 to 75.  
Oats—No 3 white, 59 1/2 to 60 1/2; No 4 white, 59 1/2 to 60.  
Rye—No 2, 1.28 to 1.29 1/2.  
Barley—82 to 83.  
Timothy—5.50 to 5.60.  
Clover—12.00 to 14.  
Pork—17.00 to 18.40.  
Lard—10.42.  
Ribs—9.25 to 9.75.

	High	Low	Close
Wheat			
May	163 1/2	162 1/2	163 1/2
July	159	158	158 1/2
Corn			
May	81 1/2	80 1/2	80 1/2
July	82 1/2	81 1/2	82 1/2
Oats			
May	61 1/2	61	61 1/2
July	58 1/2	57 1/2	57 1/2
May	18.55	18.70	18.87

## NEW YORK COTTON MARKET SALES

	High	Low	Close
Mar	8.67	8.63	8.63
May	8.94	8.86	8.86
July	9.12	9.07	9.08
Oct	9.37	9.30	9.33
Dec	9.50	9.44	9.45

## CLOSE WINNIPEG WHEAT.

May—157%  
July—158%  
Close Winnipeg Oats.  
May—68%.

## CLOSE WINNIPEG OATS.

May—68%.

## WESTERN ASSURANCE CO.

INCORPORATED 1851.  
Assets, \$3,213,438.28  
R. W. W. FRINK - - - - - BRANCH MANAGER  
ST. JOHN, N. B.

## THOMAS BELL & CO., St. John, N. B.

PUGLIS BUILDING, 48 PRINCE STREET  
Lumber and General Brokers  
SPRUCE, HEMLOCK, BIRCH, SOUTHERN PINE, OAK, CYPRESS,  
SPRUCE PILING AND CREOSOTED PILING.

## LONDON GUARANTEE AND ACCIDENT CO. LTD.

EMPLOYERS' LIABILITY, -- ACCIDENT AND SICKNESS INSURANCE, -- GUARANTEE BONDS.  
CHAS. A. MACDONALD & SON, Provincial Managers  
49 Can'ebury Street Phone Main 1535

## Queen Insurance Company.

Agents Wanted.  
C. E. L. JARVIS & SONS 74 Prince William St.

## Canada's Best

Quality and Durability

Willis

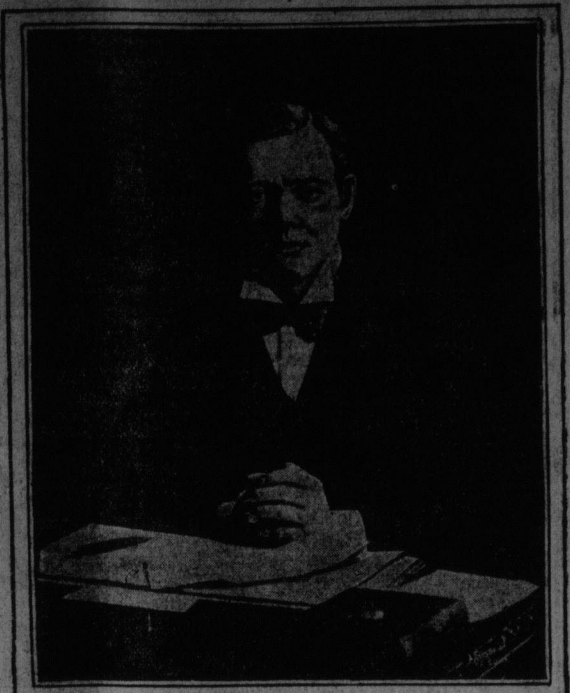
Behind WILLIS pianos and players stand public and artistic approval. The WILLIS occupies a unique position among the best pianos of the world, and it is everywhere held in the highest esteem by artists and musical leaders, and is regarded as peerless in tone, touch, workmanship and durability.

WILLIS & CO., LTD. -- Manufacturers -- MONTREAL

LOCAL REPRESENTATIVES:

WILLIS PIANO & ORGAN CO. HALIFAX AND ST. JOHN

## ENGLAND COULD CARRY ON THE WAR ALONE, DECLARES CHURCHILL



Winston Spencer Churchill, in an interview, recently said that, with France and Russia both withdrawing from the Allies, England would be able to carry on the war alone successfully. Continuing he also said: "Supposing Germany has friendships and relationships in South America, how can help reach her from them now? We shall arrange to take precautions fully compatible with the rights of belligerents and the respect due to neutrals. Our adversary perhaps can obtain a few supplies from Turkey and Asia Minor. I cherish no illusions, for as long as there are neutrals a complete blockade must be a chimera. Germany will continue to receive a small quantity of that which she has considerable need, but while you and we breathe freely, thanks to the sea we have kept and can keep open, Germany is like a man throttled with a heavy gag."

## INTERESTING CASE BEFORE APPEALS COURT

Frederickton, N. B., Feb. 10.—In supreme court of appeal argument in the case of Ross vs. New Brunswick Construction Company was resumed this afternoon, W. H. Harrison and H. G. Teed, K. C. for plaintiff, following Attorney General Baxter for the company, Court considers.

In Windsor vs. Young next called, Judge McKinnon has been assigned to sit on appeal in Place of Judge White who has been called away on urgent business. This appeal is supported by plaintiff by J. P. Byrne, defendant's counsel being M. G. Teed, K. C. and G. W. Gilbert, K. C.  
The next case on the docket, Roy at Bank of Canada vs. Bustin was set down for hearing on Friday as also the case of Blue vs. Miller et al.  
Tomorrow on conclusion of the case of Windsor vs. Young, the court will bear argument in Phillips vs. Montgomery et al.  
Windsor vs. Young is a Gloucester county appeal and was tried before Judge McLachly with a jury. Plaintiff sued for \$325. The judge found \$502 due from plaintiff to defendant. Amount due plaintiff was offset, a verdict for \$400 entered for defendant and balance was undisposed of. The case, in which payments of promissory notes brought parties arise after action brought raises some interesting distinctions between what are known as offsets and counterclaims, argument in consequence being listened to with considerable interest.

## ASSOCIATED CHARITIES HELD MONTHLY SESSION

In the absence of the president and vice-president, Mrs. George F. Smith presided at yesterday's monthly meeting of the Associated Charities. The secretary, Miss Grace Robertson, reported 240 applications received during January. The report showed requests for employment from seventy-four, including twenty-four men, thirty women, four boys, six young girls, three men seeking at home, and seven men, seeking relief; thirty requests for meals, twenty-one; employment found for twenty-two; recommended, thirty-one; relief procured for thirty-three; records given, twenty-one; letters written, twenty-five; visits made, fifty; cases investigated, twenty-seven; ten for other cities; clothing given to twenty-seven; asking lodgings, seven men; asking transportation, two men.

The treasurer, William Young, reported a good balance on hand, but the loss of the city grant will be felt by the board this year.

Several pathetic cases of need were described by the secretary.

## COAL AND WOOD.

DOMINION COAL COMPANY  
GENERAL SALES OFFICE  
112 ST. JAMES ST. MONTREAL

R. P. & W. F. STARR, LTD., Agents at St. John.

## Georges Creek Blacksmith Coal

The Test in the Market  
OLD MINES SYDNEY  
SPRINGHILL RESERVE  
SCOTCH AND AMERICAN  
ANTHRACITE  
In all sizes always in stock.  
R. P. & W. F. STARR, Ltd.  
49 Smythe Street, 226 Union Street.

Acadia Pictou, cleanest Soft Coal, \$3.50 and \$4.10 per load delivered.

GEO. DICK, -- 48 Brittain St., Tel. M. 1116. Foot of Germain St.

## SCOTCH SOFT COAL.

I have 100 tons Scotch Soft Coal for sale. This is a special coal, leaves very little ash, gives great heat.

JAMES S. MCGIVERN,  
5 MILL STREET.  
Tel. 42.

## STEAM BOILERS

We have on hand, and offer for sale the following new boilers built for a safe working pressure of one hundred and twenty-five pounds:—  
One "Inclined" Type ..... 50 H. P.  
One Return Tubular Type 60 H. P.  
One Locomotive Type ..... 20 H. P.  
Two Vertical Type ..... 20 H. P.  
Full particulars and prices will be mailed upon request

## I. MATHESON & Company, Ltd.

BOILER MAKERS  
NEW GLASGOW, NOVA SCOTIA.

## NOTICE TO MARINERS

Notice is hereby given that Peases Island Ledge bell buoy is gone from position. Will be replaced as soon as possible.  
J. C. CHESLEY,  
Agent, Marine and Fisheries Department  
St. John, N. B., February 8th.

## ROBERT CARTER CHARTERED ACCOUNTANT

Auditor and Liquidator  
Business Systematized  
Cost Systems Installed  
McCurdy Building, Halifax.

## Paul F. Blanchet CHARTERED ACCOUNTANT

Telephone Connection  
St. John - and - Rothesay

## RAILWAYS.

### CANADIAN PACIFIC

Direct Short Route MARITIME PROVINCES TO

Montreal and West (Daily Except Sunday.)  
Lv. HALIFAX ..... 8.00 a. m.  
Lv. ST. JOHN ..... 8.45 p. m.

### Fast Express Trains BETWEEN MONTREAL-TORONTO DETROIT-CHICAGO.

Electric Lighted Sleepers. Compartment Cars.  
W. B. HOWARD, D. P. A., C. P. R., St. John, N. B.

### CANADIAN GOVERNMENT RAILWAYS INTERCOLONIAL

PRINCE EDWARD ISLAND AND

### DAILY SERVICE

Halifax, St. John and Montreal.  
MARITIME EXPRESS  
Leaves Halifax 2.00 p. m.  
Leaves St. John 6.30 p. m.  
Arrives Montreal, 6.30 p. m. daily.  
Through Sleepers. Excellent Dining Car Service.

### STEAMSHIPS.

### ELDER-DEMPESTER LINE

South African Service.

S. S. Kwara sailing from St. John about February 25th for Capetown, Port Elizabeth, East London, Durban and Delagoa Bay. Cold storage accommodation on each vessel. Accommodation for a few cabin passengers. For freight and passenger rates apply to

J. T. KNIGHT & CO., Agents, St. John, N. B.

### EASTERN STEAMSHIP CORPORATION

INTERNATIONAL LINE REDUCED FARES.

St. John to Boston ..... \$5.00  
St. John to Portland ..... 4.50  
Staterooms, \$1.00.  
Leaves St. John Thursdays at nine a. m. for Lubec, Eastport, Portland and Boston.

Returning leaves Central Wharf, Boston, nine a. m. Mondays for Portland, Eastport, Lubec and St. John. City Ticket Office, 47 King Street.

J. F. LISCOMB, Agent, St. John, N. B. C. B. KINGSTON, Commercial Agent, Eastport, Me.

### MANCHESTER LINE

From Manchester. St. John. Jan. 2 Man. Spinner Jan. 27 Jan. 9 Man. Marlier\* Jan. 25 Jan. 16 Man. Clifton Feb. 8 Jan. 23 Man. Miller Feb. 5 Jan. 30 Man. Inventor Feb. 22 Feb. 6 Man. Port. Mar. 3