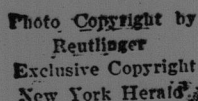
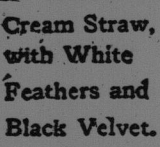
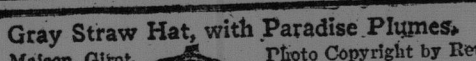


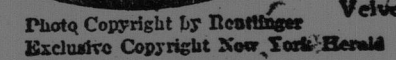
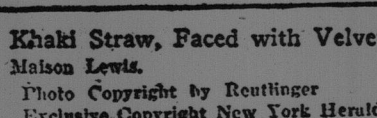
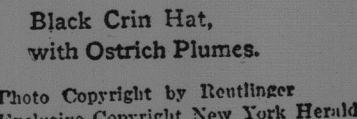
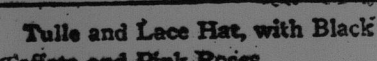
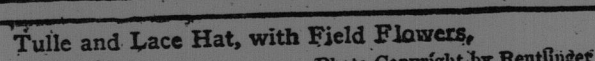
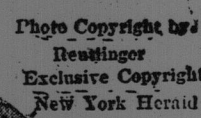
Midsummer Millinery Gives Warning of Autumn Styles.



Gray Crin, with
Black Wings and
Silver Braid.
Maison A. Miller.



Cream Straw,
with White
Feathers and
Black Velvet.



The New "Small" Hats.

HATS FOR MOTORING.

Black Crin Hat with Ostrich Plume
Photo Copyright by Reutlinger
Exclusive Copyright New York Herald

White Straw Hat, with Black
Velvet and Pink Flowers, Mignon Marescot
Photo Copyright by Rentlinger
Mastering Copyright New York Herald

Save that it must represent size in one

signed to literally match a certain dress costume, now the hat is seen to contrast violently with the dress. If the colors

are double bowknot of ribbon is good

of creating contrast, there being frequently not the smallest suggestion of foreign color in the trimming of the gown itself.

In the French models wide brimmed shapes, with the left side turned up sharp

for to harmonize with the pongee or li

Mushroom hats, with softly rounded bent down brims, must now take second

Nothing short of a wig will solve the problem for certain qualities of hair.

Tan colored crêpe de Chine lined with

of a thin quality of pongee or some soft sl
old is best for a motor hood such as is us
for extensive touring

any for extensive touring.