

THE EVENING TIMES-STAR, ST. JOHN, N. B., FRIDAY, DECEMBER 14, 1923

## Social Notes Of Interest

Mrs. John M. Robinson was a charming hostess yesterday afternoon at her residence at Rotheray, when six tables of bridge were played. The prize winners were Mrs. Heber Vroom, Mrs. H. P. Puddington and Mrs. J. Lee Day. Mrs. H. B. Robinson and Mrs. H. W. Frink presided at the tea hour and were assisted in serving by Mrs. C. M. Bostwick and Miss Celia Armstrong. Among those present were: Mrs. Thomas Bell, Mrs. J. Lee Day, Mrs. George E. Barbour, Mrs. C. M. Bostwick, Mrs. F. W. Daniel, Mrs. Daniel Mullin, Mrs. Allan G. McAvity, Mrs. M. A. Curry, Mrs. James Curry, Mrs. Vroom, Miss Edith Skinner, Mrs. Robert Cruikshank, Mrs. J. Roy Campbell, Miss Celia Armstrong, Mrs. H. B. Robinson, Miss Ethel Sidney Smith, Mrs. Cortlandt Robinson, Mrs. Harold Ellis, Mrs. J. Royden Thomson, Miss Annie L. Brock, Mrs. John McIntyre, Mrs. Walter Holly, Mrs. del. Carruth, Miss Frances Allison, Mrs. Rupert Turnbull and others.

Mrs. Charles P. Logan was at home on Wednesday afternoon at her residence at a delightful reception for about 60 guests. Her home was very pretty in its decoration of yellow roses and marguerites. The ladies presiding at the tea table were Mrs. Struan Robertson and Mrs. Frank L. Peters. Those who assisted were Miss Barbara Doherty, Miss Doris Barbour, Miss Agnes Montgomery, Miss Mary de Forest and Miss Helen McAvney.

Mrs. Logan entertained again yesterday afternoon at her residence, as on the previous day. She was assisted by Mrs. S. Kent Scott and Mrs. H. N. Stetson, who presided at the prettily decorated tea table. Those who waited upon the guests were Miss Edith Mace, Miss Sylvia Ferguson, Miss Agnes Montgomery, Miss Elsie Henderson and Miss Cecil Coleman. On both occasions Mrs. Logan was assisted in receiving by Miss Kathleen Logan and Miss Edna Logan. The hostess was gowning in a rich black lace over satin. Miss Kathleen Logan wore a pretty grey and blue crepe de chine and her sister was very becomingly gowning in grey Canton crepe.

The members of the Younger Set Bridge Club who were present at the home of Mr. John McCreedy Wednesday evening were: Miss Elizabeth Foster, Miss Alice Tilley, Miss Beryl Mullin, Miss Doreen McAvity, Miss Marion Henderson, Miss Margaret Day, Mr. Arthur Schofield, Mr. Douglas McKean, Mr. Hazen Short, Mr. Leslie Jones and Mr. Ronald Jones. The prize winners were Miss Foster and Mr. Short.

Mr. and Mrs. T. H. Estabrooks expect to leave for Winnipeg on Christmas night. They will return to the city about Jan. 14 and will leave in two weeks for the Mediterranean to spend the winter.

Mrs. Macaulay, wife of Dr. A. E. Macaulay, has gone to Philadelphia with her husband's mother, Mrs. A. E. Macaulay, who is undergoing treatment following a recent serious operation upon her throat.

Miss Leola Langburn and her brother, Mr. Cecil Langburn, are guests of their uncle, Mr. John Stevenson, and Mrs. Stevenson, 70 Wentworth street. They came from their home in Cumberland Bay, Queens county, and will spend several days here.

Miss Florence Gorman, of Toronto, is the guest for a few days of Mr. and Mrs. Bertram Smith en route to England for the Christmas holiday at her home in London. Miss Gorman will sail on the Montcalm.

The St. John Chapter of the Mount St. Vincent's Alumnae met at the home of Miss Winifred Ritchie on Wednesday evening for a Christmas novelty shower for a charitable institution in the city. After a happy time considering the gifts donated, refreshments were served by the hostess and a delightful social hour enjoyed.

Mrs. J. C. Rayworth, of this city, who went to Greenwood, S. C., for a trip, accompanying Miss Reta Brennan, also of this city, has been engaged as organ and piano musical director in Lander's College, where Miss Brennan has been head of the vocal department for two years. Recently Mrs. Rayworth gave a most successful pipe organ recital, assisted by Miss Brennan and two other members of the faculty, Miss Aunspach, violinist, and Miss Bailey, of the piano department.

Mrs. Elmer Alexander entertained a few friends informally at the tea hour, Tuesday, for the pleasure of her guest, Mrs. Isabel B. Watson, who is en route to her home in the South after spending the summer in New Brunswick. The hostess was assisted by Mrs. Leonard Goodie. Mrs. Watson will leave on Monday for her home in Athens, Georgia. She will be accompanied by her son-in-law, Inspector L. R. Hetherington, who will spend his Christmas vacation in the South, the guest of Mrs. W. F. and Mrs. Watson.

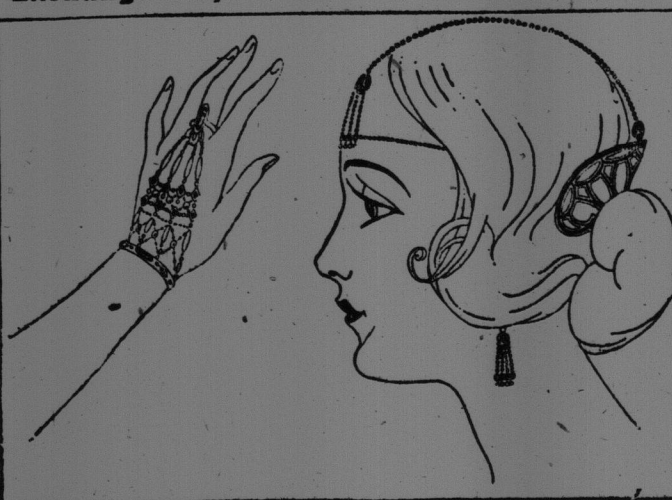
Mrs. G. M. Barker was a delightful hostess at five tables of bridge on Tuesday evening at her residence, Queen Square. Mr. Joseph Finley, Mr. J. S. Davidson, Mrs. W. S. Clawson and Mr. W. G. J. Watson were the prize winners. The house was decorated with carnations and roses and was very artistic. On entering the drawing room each lady guest was presented with a pretty corsage bouquet, and the gentlemen with a boutonniere. Miss Edith Barker, niece of the hostess, assisted in serving the guests. The function was an informal affair, given by Mrs. Barker for a few intimate friends, prior to her departure for the South. She expects to leave immediately after Christmas for Florida.

Mr. Kenneth S. Pickard of Sackville announces the engagement of his daughter, Miss Mary Alice Pickard, to Mr. Charles W. H. Lewis of Yarmouth, Nova Scotia. Mr. Pickard is well-known in St. John. His wife was formerly Miss Jean Campbell, daughter of the late Rev. Dr. G. A. Campbell, pastor of Centenary church.

Mr. John Crawshaw of Sackville announces the engagement of his daughter, Miss Annie Crawshaw of Fredericton, to Mr. Kenneth J. MacDougall of Fredericton, the wedding to take place in Amherst, N. S., very soon.

## HAVE YOU ANY MONEY TO WASTE?

Paris Has Devised a Nice New Way to do It—  
Exchange Surplus Gold for Gorgeous Display



(By Mariah Hale.) hamper the free movements of the hand. And more jewels than you've ever worn before.

This is the verdict from Paris. The dinner ring that covered the entire small finger, and that you used to think so immense and pretentious, is as a diminutive doll's ring contrasted with the latest French novelties. For instance, there's the "jeweled glove," an innovation that fills the jeweler's heart with joy and the father's with despair. By it, finally, woman can wear more jewels on her hand than ever before.

The "glove" may be of diamonds, pearls or both. It hangs over the back of the hand, from a gorgeous finger ring to a still more entrancing bracelet. Platinum chains hold the stones together in an artistic design. The chains are supple and strong, and in no way

### If He Smokes

Let Us Solve the Christmas Gift Problem

A Box of Cigars, a Pipe, Pouch, Cigarettes, Holders, Ash Trays.

A. FRED deFOREST

150 PRINCE WILLIAM

45 CHARLOTTE

## Sister Mary's KITCHEN

(Unless otherwise specified, these recipes are planned for four persons.)

**Coffee**  
(Unless otherwise specified these recipes are planned for four persons.) Every hostess feels her reputation is more or less marred or made by the character of coffee she serves her guests. The everyday brew for the family is quite as important.

There is no luck or magic about good coffee. However, there are one or two facts worth keeping in mind. A blend of Mocha and Java coffee, in the proportion of two parts of Java to one of Mocha, gives a fine sparkling beverage suited to the average taste.

Buy coffee in small quantities unless you grind it yourself. After coffee is ground it loses its strength unless kept in air-tight containers.

Many brands of coffee nowadays are "pre-cut." It is used for boiled coffee. If percolated coffee is preferred the coffee should be ground fine. For filtered coffee the berry should be pulverized.

Accurate measurements are as essential for coffee as for cake. While the amount of coffee needed to a cup of water varies somewhat according to the brand, this is gauged easily after the first pot of coffee is made and the measurements can be reconstructed to suit.

Old-fashioned boiled coffee is always popular and, if carefully made, as wholesome as any kind.

**Boiled Coffee.**  
Four tablespoons medium ground coffee, 1-2 cup cold water, 8 eggshells or 1-2 egg and shell, 1-2 cups boiling water.

Mix eggshells with half the cold water. The shells are crushed finely. Mix with coffee and put into scalded coffee pot. Add boiling water and stir thoroughly. Pour remaining one-quarter cup of cold water into pot through the spout and let stand three minutes where it will keep hot but not boil.

This rule will make four cups of coffee as a cup of coffee does not equal

### AUNT JEMIMA PANCAKE FLOUR Delicious!

the standard measuring cup. Enough white of egg sticks to three eggshells to clear this amount of coffee when eggs are high.

If a large amount of boiled coffee is needed a whole egg is required.

**After-Dinner Coffee.**  
One-half cup coffee, 1-2 cup cold water, 1-2 egg and shell, 1-2 cups boiling water.

Make the coffee as in preceding rule and serve without cream. To obtain the "half egg" beat egg slightly before measuring and add half the crushed shell. The remaining half should be tightly covered and placed in a cold place or on ice until the next day.

**Filtered Coffee.**  
One-half cup pulverized coffee, 8-12 cups boiling water.

Put coffee in filter bag or strainer and slowly add boiling water. To do this, fill the coffee container with water, cover and let stand until water drips through coffee into the pot. If a stronger coffee is desired pour the filtered coffee over the grounds the second time. Filtered coffee lacks the sparkle of boiled coffee and has a different taste.

**Percolated Coffee.**  
Percolated coffee requires 20 to 30 minutes of "perking" to make a good cup of coffee. The boiling water that comes through the tube is small in quantity and it must come and fall over the grounds many times. A finely ground coffee makes better percolated coffee than a coarse or medium ground coffee.

**Cafe au Lait.**  
One-half cup hot milk, 1-2 cup freshly made coffee.

This is served for breakfast and is really a nourishing drink. Percolated, boiled or filtered coffee of ordinary strength is used.

"Vienna coffee," so often served at afternoon affairs, is extra strong coffee served with whipped cream. The coffee is not as strong as "after-dinner" coffee, but is stronger than ordinary breakfast coffee. Instead of doubling the amount of coffee as in after-dinner, use "half as much again." (Copyright, 1923, NEA Service, Inc.)

An English inventor has made a metal grate that can be attached to an apartment house window and the baby put in it to get fresh air.

### YOU DO NOT HAVE TO MAKE

Washington's Coffee

IT IS MADE

JUST DISSOLVE IT AND DRINK IT.

A GREAT CONVENIENCE AND OH, SO GOOD!

## Wash Days Stop For New Hundreds

Thanks largely to enthusiastic patrons, hundreds of homes have recently been persuaded to try the New System Wet Wash. That means the end of Wash Day in hundreds of places where its burdens included costly washing that's now done better and far cheaper at

## New System Laundry

Wet and Dry Wash—Dyers, Dry Cleaners.



## MAKE SURE OF YOURS

Fuller of Christmas than ever, Robinson's Fruit Cakes are made and mellowing. As with old wine, Robinson's has to be made far in advance to ripen in richness.

Speak for Yours, to your grocer. Be sure about

Robinson's

# WRIGLEY'S

## Sealed!

At great expense we developed the product to meet our ideals in quality and flavor.

Then we spared no expense to make the package worthy of the contents.

Sealed Tight—Kept Right.

You'll always get WRIGLEY'S in all its original goodness and flavor.

Pure chicle and other ingredients of the highest quality obtainable, made under modern sanitary conditions.

Aids digestion—keeps teeth white—

After Every Meal

## McMillan's Magnificent Christmas Display

## Art Greeting Cards and Calendars

Our store is the mecca of discriminating buyers and we have one of the largest stocks in all Canada, at all prices to select from. Every year we endeavor to set a new standard in the wide range and artistic excellence of our stock which is personally selected from the leading Art Publishers on both sides of the water, hence the wonderful success that has attended this branch of our business.

**ROYAL CARDS** —Replicas from originals in possession of Their Majesties the King and Queen, to be procured only at our store.

**CHRISTMAS GIFT DRESSINGS** —Enclosure Cards, Tags, Seals, Tinsel Card, Silk Holly, Ribbon, Holly Tape.

**GIFT STATIONERY** —In infinite variety. The best procurable. HAND MADE PAPERS—Envelopes lined with delicate shades of tissue. A splendid range of Crane's papers attractively boxed. Die stamping with crest or monogram if required. All Prices.

**FOUNTAIN PENS** —About everything worth having. A great variety in gold mountings.

**EVERSHARP PENCILS** —Companion Sets, Pen and Pencil in Silver and Gold. Largest assortment to select from.

**LEATHER GOODS** —Bill Folds, Letter Cases, Card Cases, Writing Portfolios, Hand Bags, Bridge Sets, etc. Lettered in Gold Free.

**TOYS, DOLLS, GAMES, JUVENILE BOOKS** —Make your selection early.

**AS USUAL** Everything on the first floor. The improved McMillan way of displaying the goods makes shopping a pleasure.

J. & A. McMILLAN, LIMITED **McMILLAN'S** 98 & 100 Prince Wm. St.

