

\$2.50 "ARROW" DRESS SHIRTS, \$1.98.
 In fine quality shirtings; "Donchester," "Marquis of Salisbury," white pleated and soft mushroom pleated shirts; all coat styles, with laundered cuffs. Sizes 13 1/2 to 17. Regular \$2.50. Wednesday \$1.98.

THE ROBERT SIMPSON COMPANY LIMITED

Linen Collars 5c
 Men's Imported Linen Collars, double band; close-fitting; long, dress or straight bands, with square or round corners; finest quality. Sizes 13 to 18 1/2. Regular 25c each. Wednesday 5c.

MIDWINTER SALE ITEMS FOR YOU TODAY

Women's Coats \$8.95

A variety of new winter models, including military, Russian, flare, yoke and belt styles; ulster or three-quarter lengths, in chinchilla, blanket cloth, curl cloth, cheviot, tweeds and reversible plaids; a number have plush trimmings; colors, negro brown, Copenhagen, navy, black, gray, plaids and mixtures. Were \$12.50 to \$16.50. Wednesday, \$8.95.

WHITE COATS, \$13.95.
 White chinchilla, sports and skating coats, in latest American styles; full ripple, with or without belts; some fur trimmed. Wednesday, \$13.95.

WOMEN'S FUR TRIMMED SUITS, \$17.95.

In navy or black, fall weight serge, interlined for winter wear; military or Russian styles, with fur collar, cuffs and on coat flare; fronts fastened with groups of loops, with velvet or fancy buttons. Special, \$17.95.

WOMEN'S DRESSES, \$13.95.
 75 only, broken lines from our regular stock. The materials include taffetas, paillettes and messaline silk, combined with Georgette crepe in many pleasing models; also smart serge and poplin dresses. Sizes in the lot, 32 to 40. Some were \$25.00. Wednesday, \$13.95.

SKIRTS FOR WOMEN, \$3.89.
 A limited number of broken lines from stock. Styles good. Serges in black and navy; assortment of sizes. Regular \$4.50 and \$5.00. Wednesday, \$3.89.

Misses' Skating Coats \$6.98

Smart styles in novelty tweeds, with leather trimming. Sizes 14 to 18. Wednesday, \$6.98.

MODERATELY PRICED SKIRTS.
 Tailored in new styles from plaids, velvets, silks, fancy tweeds and serges. Sizes 23 to 25 waist bands. Prices, \$3.98 to \$6.75.

GIRLS' DRESSES, \$2.98.
 Regular \$4.75 to \$5.00.
 75 to 100 Dresses, in serges and Panama, and trimmed with contrasting shades. Sizes 6 to 14 years. Wednesday, \$2.98.

White Goods

36-inch Snowflake Crepe. Regular 25c. Wednesday, 9 1/2c.
 36-inch Rep. Regular 25c. Wednesday, 15c.
 45-inch Bordered French Crepes. Regular \$1.00. Wednesday, 35c.

NEW WASH FABRICS.
 Unique voiles, seed cloth and silk and cotton goods, in designs that cannot be duplicated anywhere; width 36 inches. Prices 25c, 50c, 75c and \$1.00.
 40-inch Chiffon Voiles, 25c.
 40-inch Perfection Voiles, 25c.
 40-inch Beauty Voiles, 50c.

WEAVING LINES.
 27-inch Kimono Cloth, 9 1/2c.
 36-inch Light Ground Prints, 9 1/2c.
 36-inch Remnants and Oddments, 12 1/2c.

ENGLISH SERGES.
 2,400 yards Fine Twill Serges, at 74c. A purchase made in February, 1915; old dyes; guaranteed fast; soap shrunk; three shades of navy and black. Regular \$1.00. Wednesday, 74c.

Cloaking for zero weather, \$1.89, 3,000 yards. Regular \$2.00 and \$2.50. Broken lines, short lengths and odd pieces of tweeds, chinchilla, fancy curls, plaids, etc.; 6 1/2 inches wide. Wednesday, \$1.89.

Shepherd Checks, heavy English worsted finish; every size of checks; 42 in. wide. Regular 48c. Wednesday, 38c.

Black Dress Fabrics at \$1.00. Including Priestley's famous makes. Regular \$1.25. Wednesday, \$1.00.

BLACK SILKS.
 Black Duchesse Paillette, 36 in. and 38 in. wide, Reg. \$1.24. Wednesday, 98c.
 C. J. Bonnet's Black Duchesse Dress Satin, 36 in. wide; guaranteed and stamped. Regular \$1.35. Wednesday, \$1.15.

200 yards Black French Chiffon Taffeta, 40 in. wide. Regular \$2.00. Wednesday, \$1.50.
 Black Satin Duchesse, chambruse finish; 40 in. wide. Regular at \$1.50. Wednesday, \$1.25.
 Black Dress and Suiting Serges, including C. J. Bonnet's; 40 in. wide. Regular \$1.69. Wednesday, \$1.46.



Today's Boots and Shoes

Women Who Wear Any Size from 2 1/2 to 4 Can Buy \$2.00 to \$4.50 Boots for \$1.49 Wednesday.

Patent colt, vic kid, gunmetal calf and selected tan Russia calf, in several popular shades, with dull kid, cloth and fancy tops; narrow, medium and wide toes; high, medium and low heels; flexible McKay, hand-turned and Goodyear welt soles. If you wear any size from 2 1/2 to 4, you will be sure to find something suitable. Regularly \$2.00 to \$4.50. Wednesday \$1.49. No mail orders.

CHILDREN'S CAMEL HAIR SLIPPERS.
 Regular 59c to 79c, Wednesday 19c.
 Noiseless House Slippers, with flexible leather soles; little pom-poms on vamp; turn-down collars.
 All sizes 3 to 10 and 11 to 2. Wednesday 19c.

MEN'S BOOTS FOR HEAVY WORK AND STORMY WEATHER, \$2.49.
 250 pairs only Men's Tan and Black Oil Tanned Storm Calf Mining or Trench Boots, with 15-inch legs; reinforced with back stay; some have two straps and buckles at top; sizes 9, 10, 11, 12. \$5.00 values. Wednesday \$2.49.

No exchange on these goods.
BOYS' BUTTON AND BLUCHER BOOTS FOR \$1.99.
 500 pairs of Boys' Boots, suitable for dress and everyday wear; gunmetal calf, box calf, and some tan Russia calf in the lot; all have neat, full, round toes; medium and heavy weight soles; sizes 1 to 5 1/2. Regular \$2.50. Wednesday \$1.99.

Dress Hats at \$4.85 for Women

Fifty Hats, hand-made from Lyons velvet, Georgette crepe, nixon and faille silk, in black and colors; trimmed with new flowers, ribbons, ostrich tips and mounts. Wednesday, \$4.85.

500 UNTRIMMED HATS.

Lyons silk velvet or hatters' plush, in the season's most desirable shapes, including small, close-fitting styles; black principally. Regular \$3.00 to \$4.50 each. Wednesday, \$1.59.

6-inch Ribbon 15c

Pure silk taffeta; complete range of colors. Wednesday, 15c.

RIBBON REMNANTS.

Long and short ends of wide and narrow widths; plain and fancy. Less than half price Wednesday.

Plain Satin Ribbon, for lingerie; light colors. 1/2-inch, 5c; 1-inch, 7c; 1 1/2-inch, 10c.

Middy Waists Half Price, 49c

THREE STYLES.
 All in soft white twill cotton, trimmed in various ways; laced up the front; some with wide bands around the lower edge, and all attractive in cut, and perfect in finish. Regular 98c. Wednesday, 49c.

\$1.50 Gingham House Dresses 79c

Striped Gingham, in navy or gray, with white; high waist line; collar and cuffs of plain chambray; embroidery and pearl buttons. Sizes 34 to 44.

KNIT TOP PETTICOATS, \$1.25.
 Snug-fitting top of knitted jersey; black only; lounce of cotton, "Egyptian." Lengths 36 to 42.

Wall Papers

Regular 15c at 8c. Floral and Chambray Bedroom Papers.
 At 5c—2,000 rolls White and Cream Moire Ceiling Paper.

Regular \$1.50 at 75c—Imported Shand Kydd Papers, some hand blocked.

Regular \$2.50 at 98c—English Leatherettes, 22 inches wide.

Brussels, Wilton, Axminster Rugs

Exceptionally fine range of designs and colors.

BRUSSELS RUGS.

Oriental, two-tone and floral designs and colorings:
 4.6x 6.0... \$5.25 6.9x10.6... \$15.50
 4.6x 7.6... \$7.50 9.0x 9.0... \$17.75
 6.9x 7.6... \$11.00 9.0x10.6... \$19.75
 6.9x 9.0... \$13.25 9.0x12.0... \$22.50

NEW WILTON RUGS.

For hard wear there is nothing like a Wilton rug. Big range of designs and colors.

4.6x 6.0... \$11.25 6.9x10.6... \$27.50
 4.6x 7.6... \$12.75 9.0x 9.0... \$31.50
 6.9x 7.6... \$19.75 9.0x10.6... \$38.50
 6.9x 9.0... \$23.50 9.0x12.0... \$38.50

AXMINSTER RUGS, \$11.50.

For halls, dens, living-rooms, etc., Oriental designs, size 4.6 x 6.6. Wednesday, \$11.50.

Slightly Damaged Fireplace Mantels

Quarter-cut oak, 7 ft. 8 in. high, 5 ft. wide; 14 in. x 48 in. Mirror; set up with gas or electric grate. Regular \$67.55. Special \$39.75.

Mahogany Mantel, 4 ft. 7 in. high, 5 ft. wide; no mirror. Set up with gas or electric grate. Regular \$43.50. Wednesday, \$29.75.

MANTELS IN PERFECT CONDITION.
 White enamel, 5 ft. 8 in. high, 5 ft. wide; no mirror; set up. Regular \$88.50. Wednesday, \$29.75.

MISSION OAK.
 6 ft. high, 5 ft. wide, 18 in. x 34 in. mirror; set up. Regular \$69.50. Wednesday, \$41.75.

Men's Suits at \$15.00

Regular \$18 to \$25
 Suits of English worsteds and tweeds, in brown and gray stripe and check patterns; cut in smart single-breasted sack style, with soft roll lapels and high-cut vest. Sizes 36 to 44. Wednesday, \$15.00.

FUR-COLLAR COATS.
 Shell of English black melton cloth, linings of heavy twill mohair, interlinings of chamois, collar of good seal. Cut double-breasted, ulster style, 50 inches long; sizes 36 to 44. Wednesday, \$38.50.

39 Club Bags

Slightly soiled; brown, russet and black cowhide. Sizes 16 in., 18 in. and 20 in. Regular \$10.50 to \$13.50. Wednesday, \$9.95.

Boys' Tweed Suits \$3.95

Regular \$6.50 to \$9.50.
 110 suits, to fit boys from 7 to 12 years; in grays, browns and neat fancy weaves, single-breasted yoke Norfolk styles, with full-cut bloomers; sizes 25 to 30. Wednesday, \$3.95.

BOYS' IMPORTED TWEED ULSTERS, AT \$6.95.
 Regular \$8.50 to \$13.00.
 92 coats in the lot, to fit boys from 11 to 15 years; brown check and diagonal weaves, serge linings; sizes 29 to 33. Wednesday, \$6.95.

Men's Fur Caps

Persian Lamb, wedge or driver shape, at \$12.50 and \$14.50.

Men's Pierced Persian Lamb Fur Caps, driver shape, sliding bands to pull over the ears, \$3.50.

Men's Persian Lamb Gauntlet Gloves or Mitts, deep full cuffs, warmly fur lined, \$18.00.

Sleep Comfort at Economic Prices

Iron Bedstead, pure white enamel, brass caps. Regular \$3.00. Wednesday, \$2.10.

Brass-trimmed Iron Bedstead, white enamel, brass top rails, caps and uprights. Regular \$5.25. Wednesday, \$4.15.

Brass Bedstead, 2-in. continuous posts. Regular \$18.90. Wednesday, \$12.95.

Brass Bedstead, heavy posts and top rails, turned ball corners. Regular \$24.75. Wednesday, \$14.15.

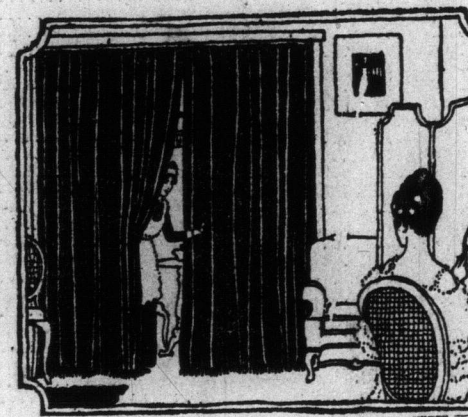
Brass Bedstead, 2-inch posts, double top rails. Regular \$34.00. Wednesday, \$22.50.

Bed Spring, kiln-dried hardwood frame, strong woven steel springs. Regular \$2.00. Wednesday, \$1.55.

Bed Spring, steel tubing frame. Regular \$3.00. Wednesday, \$1.95.

Bed Spring, heavy steel tubing frame. Regular \$4.25. Wednesday, \$2.90.

Mattress, sanitary seagrass filling; heavy layer of jute felt at both sides. Regular \$3.10. Wednesday, \$2.60.



Midwinter Sale of Lace Curtains and Curtain Materials

English Lace Curtains, bought before the great advance in cost. Two lots as follows:

Lot No. 1.—100 pairs in white, 3 1/2 yards long, Nottingham net with plain or spray centres, or cable net with plain centres. Mid-Winter Sale, pair, \$1.39.

Lot No. 2.—A mixed line for bedrooms. Nottingham Curtains, 2 1/2 yards long, with spray centres and floral borders; also Plain Brussels Net Curtains with borders of blue figured muslin. Mid-Winter Sale, pair, 69c.

750 yards of Curtain Net at 7c.—Plain Brussels Net, 27 and 30 inches wide, trimmed with neat laces and insertions. Regular 10c per yard. Mid-Winter Sale, yard, 7c.

Voile Curtains, Pair, \$1.95.—Ivory or ecru, trimmed with Nottingham laces and insertions, 2 1/2 yards long. Mid-Winter Sale, pair, \$1.95.

Staples and Linens

40c Sheetting clearing 29c yard. Bleached, heavy quality, twilled; 63 inches wide, 500 yards. Regular 40c. Wednesday, yard, 29c.

Hemmed Pillow Cases, made in England; sizes 42 x 33 and 45 x 33 inches. Wednesday, 3 pairs, 98c.

Horricks' Bleached Sheets, hemmed; size 2 x 2 1/4 yards. Regular \$2.25 pair. Wednesday, \$1.79.

White Union Wool Blankets, large size; 72 x 84 inches. Wednesday, pair, \$3.95.

White Saxony Flannelette, 31 in. wide. Wednesday, yard, 11c.

Nainsook, soft needle finish; 36 in. wide. Wednesday, 12 yards, \$1.48.

Unbleached Linen Table Damask, will bleach easily; 66 inches wide. Regular 75c. Wednesday, yard, 59c.

Brown Linen Bath Towels; heavy, close pile. Regular 75c pair. Wednesday, pair, 49c.

Huckaback Bedroom Towels, hemmed. Wednesday, pair, 25c.

Striped Terry Towelling, 16 in. wide. Wednesday, yard, 12 1/2c, 15c and 18c.

Chinaware

BOOTH'S SILICON CHINA, OPEN STOCK.

Dinner Plates, regular 15c, for 13c.
 Tea Plates, regular 13c, for 10c.
 Bread and Butter Plates, regular 12c, for 9c.

Soup Plates, regular 14c, for 12c.
 Fruit Sauces, regular 10c, for 8c.
 Vegetable Dishes, regular 75c, for 59c.

Platters, 12-inch, regular 75c, for 59c.
 Platters, 14-inch, regular \$1.00, for 75c.
 Sugar Bowls, regular 50c, for 29c.
 Cream Jugs, regular \$50, for 18c.
 Salad Bowls, regular 50c, for 35c.
 Cups and Saucers, regular 30c, for 15c.
 Soup Bowls, regular 25c, for 13c.

The New Market Telephone Adelaide 6100

"SIMPSON QUALITY" BEEF.
 Porterhouse Roast, choicest cuts, per lb. 22c.
 Wing Roast, extra choice, per lb. 23c.
 Sirloin Steak, fancy beef, per lb. 25c.
 Round Steak, tender and juicy, per lb. 24c.
 Oysters, solid meat, selected, in cans; half pints, 20c; pints, 35c; quarts, 70c.

THE GROCERIES.
 6000 packages Redpath's Granulated Sugar in 5-lb. packages, 3 packages \$1.08.
 4000 tins Finest Canned Corn, 3 tins 25c.
 Lake of the Woods Fine Roses Flour, 1/2 bag 95c.
 2000 stones Fresh Rolled Oats, per stone, 44c.
 Finest Canned Tomatoes, 3 tins 25c.
 Choice Beans, Golden Wax or Green, 3 tins, 25c.
 Finest Bleached Sultana Raisins, per lb. 16c.
 Magic Baking Powder, 1-lb. tin 21c.
 Crisco, per tin 22c.
 E. D. Smith's Pure Orange Marmalade, 16-oz. jar 15c.
 Clark's Pork and Beans in Chili Sauce, tall tin, per tin 10c.
 Telfer's Cream Soda Biscuits, pkg. 25c.
 Banner Brand Jam, assorted, 5-lb. pail 48c.
 Choice California Prunes, 2 1/2 lbs. 25c.
 Macaroni or Spaghetti, 3 packages 25c.
 Choice Pink Salmon, tall tin, per tin 10c.
 Fresh Buttermilk, per gallon 15c.
 Imported English Malt Vinegar, imperial quart, bottle 27c.
 Finest Canned Lombard Plums, 3 tins 25c.
 Roman Meal, large package 24c.
 Blue Bell Jelly Powders, assorted, 4 packages 25c.
 Libby's Sweet Mixed Pickles, 20-oz. bottle 25c.
 St. Charles Milk, per tin 10c.

FRESH ROASTED COFFEE, PER LB. 27c.
 1000 lbs. Fresh Roasted Coffee, in the bean, ground pure or with chicory. Wednesday, per lb. 27c.

PLANTS AND FLOWERS.
 Asparagus Ferns, in 5-inch pots, 13c.
 Hardy Kentia Palms, in 5-inch pots, and palms 24-inch high from pot. Regular \$1.25. Wednesday 98c.
 White Dutch Hyacinths, in pots, for table or sick room, 80c.
 Flowering Cyclamen, in different colors, to flower all winter, 50c and 75c.

FRUITES.
 Choice Florida Oranges, per dozen 20c.
 Choice Grape Fruit, large size, 3 for 25c.

VEGETABLES.
 Table Turnips, 2 for 5c.
 Carrots or Beets, small basket 8c.

THE SIMPSON COMPANY LIMITED