

We prepay shipping charges, the cheapest way, on all orders of \$10.00 or over to your nearest station in Ontario and Eastern Provinces on both Mail Orders and City Purchases.

EATON'S DAILY STORE NEWS

Take advantage of the Customers' Deposit Account Department. For further particulars, apply at D. A. Office, Fourth Floor.

Immense Selection in Easter Outfits for Men and Youths

150 New Spring Suits for Men, Extra Special Today at \$11.75

These Spring Suits are a manufacturer's clearance of short lines, there being from three to seven suits of a color or pattern. All are good smart patterns. They are in tweeds in many weaves, greys and browns, and other colors; small checks and fancy mixed patterns, also a grey with chalkline stripe. Single-breasted, 3 button sac styles, well tailored, with serviceable linings and trimmings. Sizes in the assortment 36 to 44, but not all sizes in any one pattern or color. Today, extra special at 11.75

New Spring Suits, Topcoats and Raincoats, at \$15.00, Particularly Featured Today in Men's Clothing Dept.

Many Smart Styles, Including the Much Favored Belted and Form-Fitting Models for Youths and High School Boys

One of the crowning features of the spring displays of clothing is the showing of Suits, Topcoats and Raincoats at this moderate price—\$15.00—a price which all men will realize is unusual nowadays, especially for such qualities as are offered in these selections.

Topcoats at \$15.00

Young Men's Belted and Slip-on Topcoats, in qualities that are certainly unusual at this price. They are made from tweed materials, in fancy weaves, stripes and shot mixtures, in rich browns and greys. Then there are the ever-popular Chesterfields

for men of more mature years. These coats are in Oxford and dark grey, with fly front, medium length roll lapel, and are lined throughout. The belted and slip-on coats are partly lined. Make selection early for best choice. Sizes 34 to 44. Price 15.00

Suits for Youths at \$15.00

Suits for youths and young men, which are specially designed for the athletic young fellow who wants something new and smart looking. In sizes 32 to 35 are high school boys' belted models, in brown or grey small checked pattern. Young men's, sizes 33 to 38,

are form-fitting sac styles, cut a trifle longer in body and sleeves. The shoulders are well formed and in natural width. Vests button rather high. The trousers are narrow and straight, and have cuffs and loops for belt at waist. These are shown in stylish tweeds, in various weaves and patterns. Price 15.00

Suits for Men at \$15.00

Suits in good selection of patterns, good quality of materials and smart styles. Many are the productions of our own workrooms. They are in tweeds, in many

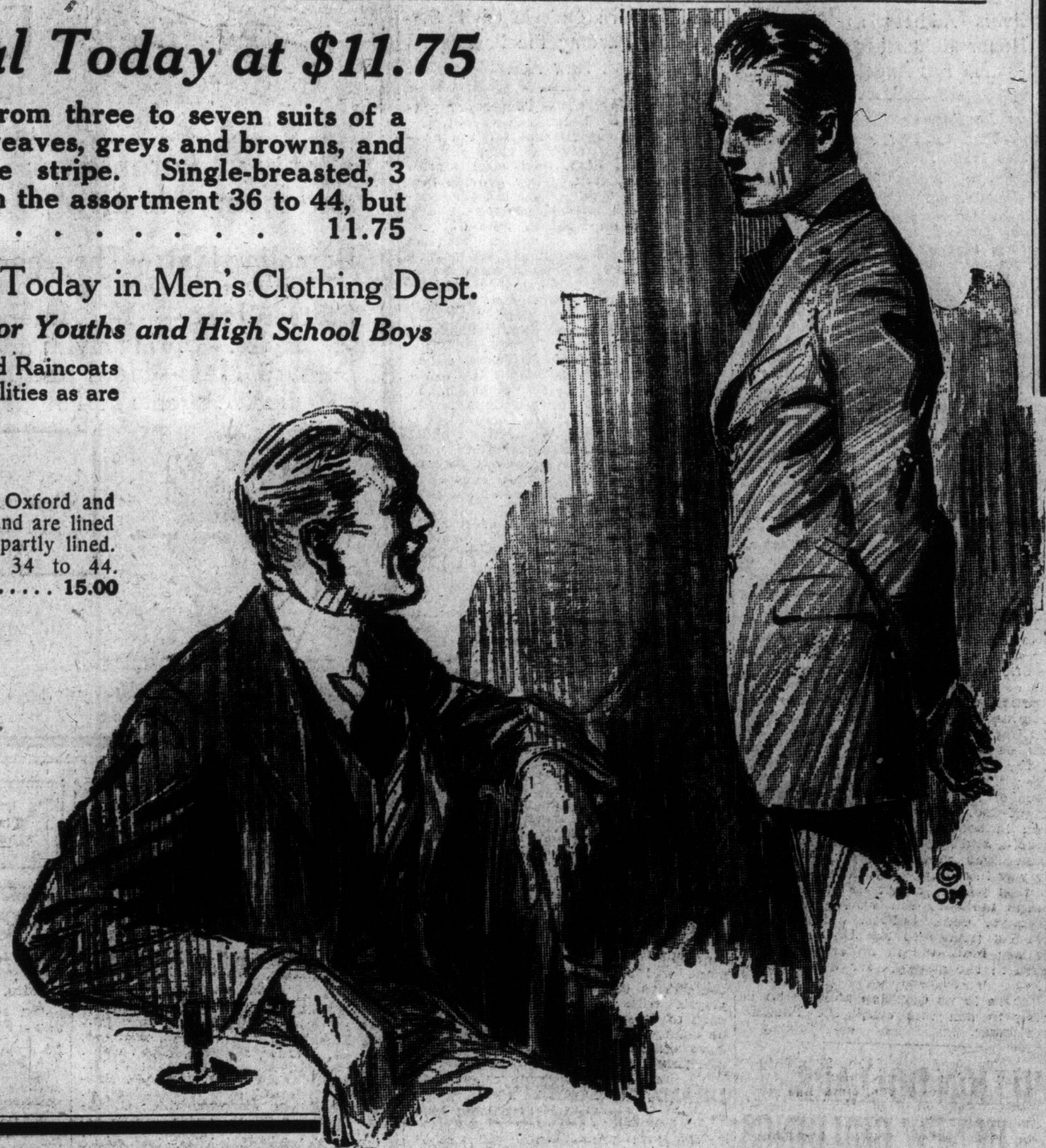
weaves, striped patterns, the fancy mixtures and neat small checks, in many shades of greys, olive and pepper-and-salt. Single-breasted conservative sac styles, well tailored and trimmed. Sizes 36 to 44. Price 15.00

Tweed Combination Rainproof and Spring Coat at \$15.00

Tweed Raincoats, in slip-on style, that answers two purposes, a protection against rain, and a comfortable garment for the cool days. In good choice of patterns, light greys and pepper-and-salt mixture, dark

greys and greens, in plain cheviot finish; also checked patterns and overplaids, in medium greys. All have plaid linings, convertible lapels, patch pockets, with flap. Set-in sleeves with cuffs and seams sewn and cemented. Sizes 34 to 44. Price 15.00

—Main Floor, Queen St.



The New Easter Outfit of Great Importance to the Boy

Choose Today From the Large Variety of Styles, Patterns and Colors in Suits, Reefers, Raincoats and Spring Overcoats

Bring the boy along today—he will soon pick out the styles, the patterns and colors that catch his fancy, and the large selections give him much to choose from.

Big Boys' Suits

Smart models in grey or brown mixtures, some in pick-and-pick patterns, others in broken stripe effects. Coats have inverted or knife pleats at back only. Belt at waist is sewn across back only. Patch pockets, with or without flaps. Twill body linings. Bloomer pants. Sizes 29 to 34. Price 8.50

Pretty shade of grey tweed, of soft finish, with faint golden thread running through. Well tailored in three-button, single-breasted style, plain front showing the new slanting pockets. Knife pleat at each side of back, running from shoulder to belt, which is sewn at back only. Fine twill linings. Bloomer pants. Sizes 29 to 34. Price 10.50

Navy Blue Serge Suits, nothing so popular for the boy, and certainly nothing so dressy. This particular model introduces something new for the boys. Two-button, double-breasted model, with wide peak-shaped lapels. Inverted pleat down centre of back; three-quarter

loose belt at back and slash pockets. Beautifully tailored and fine body linings. Bloomer pants, finished with watch pocket, self belt and expanding knee bands. Sizes 29 to 32, \$15.00. Sizes 33 to 36 16.00

Featured, also, are many lines of Tweed Suits, with two pairs of bloomers. All "EATON-made," which is guarantee alone of workmanship, quality and moderate price. All in smart, distinctive models, many mixtures of greys, in medium or dark shade; also in many patterns of browns. Nearly all show plain front, with patch pockets and belt. Various pleated arrangements at back only. Two pairs of bloomers with each suit. Sizes 29 to 34. Prices 8.75 to 16.50

Small Boys' Suits

Soft-finished, closely-woven tweeds, in pick-and-pick patterns, of grey or brown. Coats are in pinch-back or knife-pleated style, with patch pockets, and three-piece belt at waist. Lined throughout. Bloomer pants. Sizes 25 to 28. Price 7.50

Suits with extra pair of bloomers. Medium or light greys, in mixed or herringbone weave. Two distinctive models, one having yoke, three knife pleats each side of front and back, belt sewn all around at waist. Another with pointed yoke and wide box pleat at back only, and three-piece belt. Both have patch pockets. Twill linings. Two pairs well-finished, roomy-fitting bloomers. Sizes 25 to 28. Price 10.50

Fine Twill Navy Blue Wool Serge Suits of smooth, soft finish, exceptionally well tailored and designed, in fancy pleated back, or knife pleats at back and front, with sewn belt at waist, the other style having three-piece belt sewn at back only. Patch pockets, well shaped lapels and twill body linings. Sizes 25 to 28. Price 13.50

Juvenile Suits for the Little Fellows

Natty Little Suits are here in great variety. Many shades of grey or greenish grey tweeds, mostly in mottled effects. Coat style, button close to neck. Loose belt at waist, many fastening with buckle in front. Little patch or slash pockets and cuff on sleeves. White detachable collar. Knee pants. Sizes 3 to 8 years. Price, 5.75

Dark greenish grey, in very small pattern of smooth-finished tweed, Norfolk effect, three knife pleats each side at front, plain back, and belt at waist. Patch pockets and cuff on sleeves. Coat buttons to neck, white detachable collar. Knee pants. Sizes 3 to 8 years. Price 8.00

Boys' Tweed Raincoats

The "Two-Purpose" Coat, suitable for chilly or rainy days; "Trench" or "Slip-on" models, single-breasted, with convertible collar, raglan or set-in sleeves, "Trench" model, having inverted pleat down centre of back, and belt at waist, fastening with buckle. Fancy check, rubberized linings; sewn, taped and cemented seams. Sizes 29 to 36. Prices 10.50 to 15.00

Small Boys' Reefers

Navy Blue Serge Reefers, a popular coat for the boys of 3 to 10 years. Soft cheviot-finished navy blue serge, double-breasted style, box back; has side vents, emblem on sleeve and trimmed with "Anchor" brass-finished buttons. Lined throughout. Sizes 3 to 10 years. Price 7.50

Big Boys' Spring Overcoats

Beautifully Tailored Coats, single-breasted models. Grey or brown, in heather mixtures and mottled effects; lined in shoulders and sleeves only. Plain slip-on or belted models, many also having cuff on sleeve, and mostly all have patch pockets, with flap. Sizes 28 to 35. Prices 11.50 to 22.50

—Main Floor, Queen St.

T. EATON CO LIMITED