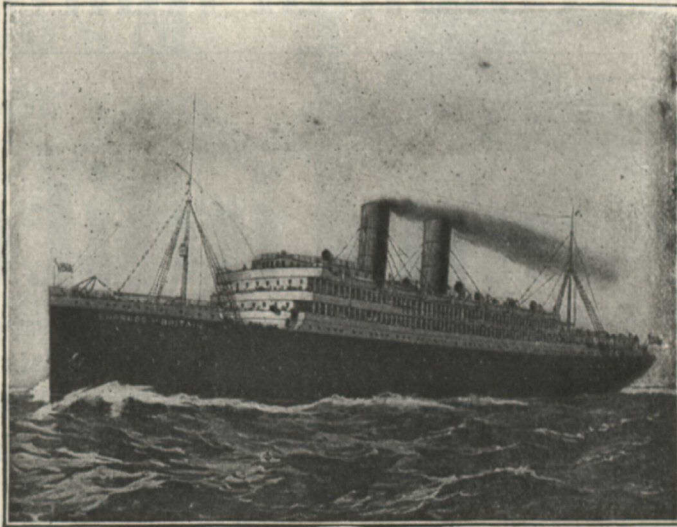


Canadian Pacific Railway Co.'s
ROYAL MAIL Steamship
Lines

THE "EMPRESSES"

— ATLANTIC SERVICE —

F
I
N
E
S
T



F
A
S
T
E
S
T

"EMPRESS OF BRITAIN" AND "EMPRESS OF IRELAND"

AND 14 OTHER MODERN ATLANTIC LINERS

For rates, sailings and other information apply to any Steamship and Railway Agent, or to G. McL. Brown,
C. P. R., Rooms 3, 4 and 5 Board of Trade Building, Montreal.

DOMINION LINE ROYAL MAIL STEAMSHIPS

WEEKLY SAILINGS

MONTREAL TO LIVERPOOL
IN SUMMER

PORTLAND TO LIVERPOOL
(Via Halifax in Winter)

S. S. "CANADA"

S. S. "KENSINGTON"

S. S. "DOMINION"

S. S. "SOUTHWARK"

S. S. "VANCOUVER"

S. S. "OTTAWA"

The S.S. "CANADA" holds the record of having made the fastest passage between Liverpool and Canada. The S.S. "CANADA" and S.S. "DOMINION" have very fine accommodation for all classes of passengers. Passenger accommodation is situated amidships, electric light and spacious decks.

To Europe in Comfort At Moderate Rates

Per S. S. "KENSINGTON" S. S. "SOUTHWARK" S. S. "VANCOUVER"
S. S. "OTTAWA" (formerly the White Star Line S. S. "GERMANIC")

To Liverpool, - \$42.50

To London, - \$45.00

AND UPWARDS, ACCORDING TO STEAMER AND BERTH

These Steamers carry only one class of cabin passengers, namely, Second Cabin, to whom will be given the accommodation situated in the best part of the vessel. This accommodation includes Promenade Decks, Smoke Rooms, Ladies' Rooms, etc., all amidships, and meets the requirements of that section of the travelling public who, while wanting the best the steamer affords, do not care to pay the higher rates demanded for such in the ships having two classes of cabins.

For all information as to rates of passage and sailings, apply to local agents or to

H. G. THORLEY,
41 King St. East, TORONTO, ONT.

THE DOMINION LINE,
17 St. Sacrament St., MONTREAL, QUE.