

OUR CHESS COLUMN.

Solutions to Problems sent in by Correspondents will be duly acknowledged.

TO CORRESPONDENTS.

J. W. S., Montreal.—Letter and papers received. Many thanks.

Student, Montreal.—Correct solution of Problem No. 183 received.

J. S., Montreal.—The Problem shall be examined. The game shall appear shortly.

The match between Miss Rudge and Mr. Thorold has at length been brought to a conclusion, the result being a draw, as each player scored ten games. It will be recalled that Mr. Thorold gave the lady the odds of Queen's Knight.

It appears that Miss Rudge has won in two previous contests with Mr. Thorold at the same odds, and that now they are anxious for another encounter.

As a matter of course, Mr. Thorold must expect very little sympathy from Chessplayers in his contests with his fair antagonist, and we believe we speak the sentiments of a good many when we say that it would be more gratifying if we could see a trial of Chess skill between the best lady players of England and those of the United States.

From the talented pen of Mr. G. H. D. Gossip will shortly be issued a book on the Chess Openings. The illness of Mr. Gossip has delayed the publication of the work for some considerable time. Mr. Gossip's reputation as a player stands high, and his book will be a valuable aid to every Chess student.

THE CHESS TOURNAMENT.

PARIS, July 8th.

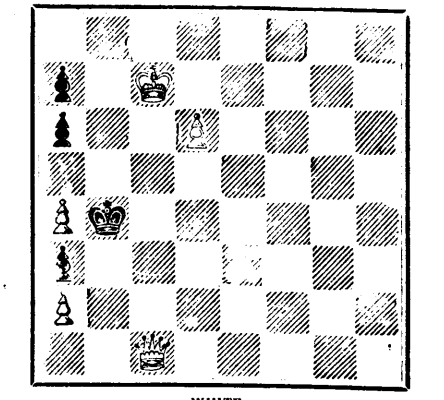
Six rounds thus far have been played in the International Chess Tournament. Winawer, of Russia, still leads; he won 9½ games and lost 2½. Mackenzie of New York won 5½ and lost 6½. Mason, of New York, won 4 and lost 8. Drawn games are reckoned as a half game to each. The contest ends on 23rd of July.

Table with columns for player names (Zukertort, Winawer, Rosenthal, Pilschel, Mason, Mackenzie, Gifford, Englisch, Tere, Blackburne, Bird, Anderssen) and rows for game results (Score, White, Black, Mate, etc.).

Score of the Paris International Chess Tournament to end of 6th round, 5th July, 1878. Each (Count of) having played twelve games. (Drawn games count half a point to each side.)

A PHOTOGRAPHIC CHESS BOARD. The Chess Editor of the Glasgow News has issued a photographic chess board containing the portraits of the players in the International Correspondence Tourney, and in addition those of the managers of the British and American teams, together with those of Captain Mackenzie, J. N. Babson, Samuel Loyd, J. B. McKim, Miss Rudge, William Fitzlayson, J. W. Shaw, A. Townsend, H. F. L. Meyer, C. M. Baxter, Queen Victoria and General Grant. Mrs. J. W. Gilbert, of this city, occupies the White Queen's square, while Miss Rudge occupies the Black Queen's square. A portion of those mentioned above are on the upper margin. The whole number of portraits is 71. The size of the largest group will be 10 x 12 inches, and the price is fixed at the moderate sum of four British shillings each—a trifle less than \$1.00. Inasmuch as only a limited number will be issued, those players of the American team who desire copies of the interesting group should send their orders to the manager of the British forces at once. Several gentlemen have already ordered five each.

PROBLEM No. 184. By W. A. SHINKMAN. (From the American Chess Journal.)



White to play and mate in three moves.

CHESS AT QUEBEC.

GAME 26TH.

At the opening of the new Chess Club at Quebec recently, two games by consultation were played by the members, of which the following is the one between Messrs. Champion, Andrews and Allies, on the one side, against Messrs. Sanderson, White, and Allies on the other:

- WHITE. (Messrs. Champion, Andrews and Allies.) 1. P to Q 4, 2. P to Q B 4, 3. B to K B 4, 4. B takes B, 5. P to K 3, 6. K Kt to B 3, 7. P to Q B 5, 8. B to Q 3, 9. Castles, 10. Kt takes P, 11. P takes Kt, 12. Kt to Q B 3, 13. P to K Kt 3, 14. P to K R 4, 15. Kt takes P, 16. Kt to K B 4, 17. Q R to B sq, 18. B to K 2, 19. B to K B 3, 20. Q to Q B 2, 21. B to K Kt 2, 22. K R to K sq, 23. P to K 4, 24. P to K 5, 25. Kt takes Kt, 26. B to K 4, 27. B takes B, 28. K R to K 2, 29. Q R to K sq, 30. P to K 6 (e), 31. P to K R 5, 32. R P takes P, 33. R to K 5, 34. R takes R, 35. Q to Q 3 (b), 36. Q to Q 7, 37. K to Kt 2, 38. P to K B 3, 39. P to Q Kt 4, 40. P to K B 4, 41. Q takes P, 42. Q takes P, 43. P to Q R 3, 44. Q to B 7 (ch), 45. Q to Q 7 (d), 46. Q to Q 8 (ch), 47. Q to K 7 (ch), 48. Q to K B 8 (ch), 49. Q to K B 7 (ch), 50. P takes Q, 51. R to K 6, 52. R takes P, 53. P to Q Kt 5, 54. K to K B sq, 55. P to Kt 6, 56. P to R 4, 57. P to R 5, 58. R to R 7 (ch), 59. P to Kt 7, 60. P to R 6, 61. R to R 8, 62. K to K sq.

- BLACK. (Messrs. Sanderson, White and Allies.) 1. P to Q 4, 2. P to K 3, 3. B to Q 3, 4. Q takes B, 5. Kt to K B 3, 6. Castles, 7. Q to K 2, 8. Kt to Q B 3, 9. P to K 4, 10. Kt takes Kt, 11. Q takes P at K 4, 12. Kt to K Kt 5, 13. Q to K R 4, 14. Q to K 4, 15. P to Q B 3, 16. Q takes Q B P, 17. Q to K 2, 18. Kt to K B 3, 19. B to K 3, 20. B to K Kt 5, 21. Q R to Q sq, 22. Q R to Q 2, 23. K R to Q sq, 24. Kt to K R 4, 25. B takes Kt, 26. B to Kt 3, 27. R P takes B, 28. R to Q 5, 29. R to K Kt 5, 30. P to K B 4, 31. R to Q 4, 32. R takes P at Kt 3, 33. R takes R, 34. R to K B 3, 35. P to K Kt 3, 36. K to B sq, 37. P to K Kt 4, 38. P to Q R 3, 39. P to K Kt 5, 40. P to Q Kt 3 (e), 41. K to Kt 2, 42. R to K R 3, 43. Q to K sq, 44. K to R sq, 45. Q to K R 4, 46. K to R 2, 47. K to R sq, 48. K to R 2, 49. Q takes Q, 50. R to K B 3, 51. R takes P, 52. R to Q B 2, 53. R to Q Kt 7 (ch), 54. K to Kt 2, 55. R to Q Kt 7, 56. K to B 2, 57. K to K 2, 58. K to Q 3, 59. K to Q 4, 60. K to K 5, 61. K to K 6, Resigns.

NOTES. (a) The right move, obtaining an advantage which is maintained throughout the game. (b) The position here is very interesting, and requires careful play. (c) There is nothing better to be done, apparently. (d) And the rest is very plain.

SOLUTIONS. Solution of Problem No. 182. A White Kt was omitted from White's K R 7 in this Problem.

- WHITE. 1. Q to K B 3, 2. R takes K R P, 3. Mates accordingly. (A) 1. B takes B, 2. K takes Q. (B) 1. B to Q Kt 6, 2. K takes R. BLACK. 1. Kt to Kt 4 (A) (B), 2. Any.

Solution of Problem for Young Players No. 180.

- WHITE. 1. Kt to Q B 6, 2. Kt to Kt 5, 3. R P takes Kt mate. BLACK. 1. P moves, 2. P takes Kt.

PROBLEMS FOR YOUNG PLAYERS, No. 181. WHITE. K to Q sq, R to Q B 5, B to Q R 3, Kt to K 2. BLACK. K to Q R 8, Q to K R 3, Pawn at K R 6. White to play and mate in five moves.

FOR SALE CHEAP Canadian Patent Right of CHAIN PUMPBUCKET Adjustable to fit the tube, too to take up the wear. A superior article. Patented February 12, 1878. Address THOS. KENYON, Box 103, Hamilton, O., U.S.A.

AGENTS WANTED, male or female, to sell the Greatest Sensation of the Age, \$5 per day. Outfit 10 c. Address A. W. KINNEY, Yarmouth, N.S.

JUST PUBLISHED CHISHOLM'S ALL-ROUND ROUTE AND PANORAMIC GUIDE OF THE ST. LAWRENCE, With corrections to date. It contains full descriptions of the points of interest on the "All Round Route," including Hudson River, Trenton and Niagara Falls, Toronto, Ottawa, Montreal, Quebec, Saguenay River, White Mountains, Portland, Boston, New York. It is profusely illustrated, and is furnished with maps of the Route, and a fine panoramic view of the St. Lawrence River. For sale by booksellers and newsagents. Sent post-paid to any address on receipt of the price, 50 cts. C. R. CHISHOLM & BROS., 179 Bonaventure street, Montreal.

In consequence of spurious imitations of LEA AND PERRINS' SAUCE, which are calculated to deceive the Public, Lea and Perrins have adopted A NEW LABEL, bearing their Signature, thus, Lea Perrins which is placed on every bottle of WORCESTERSHIRE SAUCE, and without which none is genuine. Ask for LEA & PERRINS' Sauce, and see Name on Wrapper, Label, Bottle and Stopper. Wholesale and for Export by the Proprietors, Worcester; Crosse and Blackwell, London, &c., &c.; and by Grocers and Oilmen throughout the World. To be obtained of MESSRS. J. M. DOUGLASS & CO., MONTREAL; MESSRS. URQUHART & CO., MONTREAL.

THE Canadian Spectator, A high-class Weekly Journal, EDITED BY THE Reverend A. J. BRAY. SUBSCRIPTION: \$2.00 PER ANNUM. OFFICES: 162 St. James Street, Montreal, and 4 Toronto Street, Toronto.

THE MILTON LEAGUE. "Give me the liberty to know, to think, to believe, and to utter freely, according to conscience, above all liberties.—Milton." PUBLICATIONS: BRAY, REV. ALFRED J. The Churches of Christendom, cloth. \$1.00. BROWN, REV. J. BALDWIN. The Doctrine of Annihilation in the Light of the Gospel of Love. 50. DALE, REV. R. W. Protestantism: Its Ultimate Principle. 60. The Ten Commandments. 60. DAWSON, GEO., M.A. Prayers, and a Discourse on Prayer. 50. McLEOD, NORMAN, D.D. Scotch Pebbles. 15. TIPPLE, Rev. S. A. Echoes of Spoken Words. 50.

WANTED Men and Women in every Dominion town to work for the family paper, The Contributor. 15 departments; 64 columns. Royal Art Premium, Cole's Voyage of Life (plates alone cost \$12,000). Goes everywhere. The Contributor, Boston Mass.

CHEAPEST AND BEST. DAILY WITNESS, MONTREAL WITNESS, WEEKLY WITNESS, CANADIAN MESSENGER, NEW DOMINION, MONTHLY. JOHN DUGALL & SON, 218 and 220, St. James Street, Montreal. Phototyping and Job Printing. Chromo Lithography.

IMPORTANT NOTICE. THE Burland-Desbarats Lithographic Co., 5 & 7 BLEURY ST., Begs to inform the BANKERS, MERCHANTS and BUSINESS MEN of the Dominion, that their large establishment is now in full operation, and that they are prepared to do all kinds of ENGRAVING, ELECTROTYPING, STEREOTYPING, LITHOGRAPHING and TYPE PRINTING. Photo-Electrotyping & Wood Engraving IN THE BEST STYLE, AND AT LOW PRICES. Special attention given to the reproduction by Photo-Lithography OF MAPS, PLANS, PICTURES or BOOKS OF ANY KIND. From the facilities at their command, and the completeness of their establishment, the Company feel confident of giving satisfaction to all who entrust them with their orders. G. B. BURLAND, Manager.

NOTICE TO THE PUBLIC. CANADIAN MECHANICS' MAGAZINE AND PATENT OFFICE RECORD.

This VALUABLE MONTHLY MAGAZINE has been much improved during the past year, and now embodies within its pages the most Recent and Useful information published connected with Science and the different branches of Mechanical Trades, selected with particular care, for the information and instruction of Mechanics in Canada. A portion of its columns is devoted to instructive reading, suitable for the younger members of a family, of either sex, under the title of the ILLUSTRATED FAMILY FRIEND, SUCH AS FLORAL CULTURE, NATURAL HISTORY, POPULAR GAMES AND AMUSEMENTS, LADIES' FANCY AND NEEDLE WORK, AND SHORT PLEASING STORIES, ALSO SELECTED NEW MUSIC, DOMESTIC RECEIPTS, &c.

The Canadian Mechanics' Magazine, with the addition of the Illustrated Family Friend AND PATENT OFFICE RECORD, Contains 16 full pages of Superior Illustrations and about 125 diagrams of all the Patents issued each month in Canada; it is a work that merits the support of every Mechanic in the Dominion, whose motto should always be "SUPPORT HOME INDUSTRY." Price, only \$2.00 per annum. BURLAND-DESBARATS LITH. CO., PROPRIETORS AND PUBLISHERS, 5 and 7 BLEURY STREET, MONTREAL. F. H. BOXER, Architect.

CARRATRACA MINERAL WATER. We are now receiving daily supplies of the above well-known, valuable Water direct from the Springs at PLANTAGENET, ONTARIO. For sale, in quantities to suit all. P. B. WINNING, SON & CO., 333 St. Paul Street. P.S.—The only fault with Carratraca Water (in Canada) is that it is "Canadian," but, notwithstanding that melancholy fact, it is superior to, and more certain for all purposes for which it is recommended, than any other Mineral Water known. 17-23-13-367. J. K. MACDONALD, BLACKSMITH, BELL HANGER, LOCK SMITH &c., 24 Latour Street, Montreal. REPAIRS PROMPTLY ATTENDED TO. 17-20-52-354.

HATS! NOBBY STYLES, constantly on hand and receiving from best English and American Houses, JOB C. THOMPSON & CO., 17-17-13-348, 416 NOTRE DAME STREET. \$10 to \$1000 invested in Wall St. Stocks makes fortunes every month. Book sent free explaining everything. Address BAXTER & CO., Bankers, 17 Wall St., N.Y.

THE COOK'S FRIEND BAKING POWDER Has become a HOUSEHOLD WORD in the land, and is HOUSEHOLD NECESSITY in every family where Economy and Health are studied. It is used for raising all kinds of Bread, Rolls, Pancakes, Griddle Cakes, &c., &c., and a small quantity used in Pie Crust, Puddings, or other Pastry, will save half the usual shortening, and make the food more digestible. THE COOK'S FRIEND SAVES TIME, IT SAVES TEMPER, IT SAVES MONEY. For sale by storekeepers throughout the Dominion and wholesale by the manufacturer. W. D. McLAREN, UNION MILLS, 17 19 52-362, 55 College Street.