

**Empress, Alta.**—The construction of the large bridge which the C.P.R. company is erecting across the Saskatchewan river 6 miles east of Empress is nearing completion. All of the 36 massive piers have been completed. The contract for the steel work on the structure is held by the Canada Bridge Company, and the steel material is arriving at the site. The company commenced work however, on August 31st; and it is expected that the bridge will be entirely complete by October 15th, and that the new C.P.R. line will be connected from Swift Current to Bassano. The ballasting of the line is nearly completed to the bridge, both from the east and west, and it is expected that a train service will be established at an early date the full length of the new line.

**Montreal, Que.**—A recent important announcement from the headquarters of the G.T.P. system is to the effect that a through passenger and freight service would be put in operation the third week of September between Fort William, Ont., and Price Rupert, the Pacific terminus of the line. The line from the head of the Great Lakes at Fort William to Winnipeg and Edmonton has been in operation for some time. Trains have also been operated westward from Edmonton to Prince George, a distance of 486 miles, and from Prince Rupert eastward to Priestly, a distance of 335 miles. A gap of 131 miles between Priestly and St. George remained unfinished. The laying of the steel was actually completed in April last; but aiming at absolute safety and efficiency, the opening of the system was delayed until the present time.

**Fenelon Falls, Ont.**—The new dam which has been under construction by the Dominion Government just below Fenelon Falls, and has been supervised by Mr. Alex. Spence and erected by Messrs. McPhee and Kehoe, of Brechin, is now almost complete, and will soon take the place of the old wooden structure which has served at that point for many years. The length of the new dam is 325 feet between the abutments; and consists of 12 large piers, with grooves in either side, for holding the stop-logs. A platform runs from end to end above the sluices connecting the piers; and both platform and piers are built entirely of reinforced concrete. On the platform a track is laid for the purpose of conveying the machinery necessary for adjusting the stop-logs. In the construction of the dam about 2,000 barrels of cement and 2,500 cubic yards of gravel were used. Altogether \$47,000 has been granted for the work by the Government; but with the improvements on the original plans and other necessary expenditures above the estimates the total cost will doubtless be \$55,000.

---

#### PERSONAL.

Lieut.-Col. Hon. J. S. HENDRIE, of Hamilton, has been appointed Lieutenant-Governor of the Province of Ontario, succeeding Sir John Gibson.

R. M. MILAN, of Saskatoon, has been appointed electrical superintendent of the Dominion Government interior storage elevator at Moose Jaw. He will have charge of both installation and operation.

DR. G. G. NASMITH, director of the civic laboratories at Toronto, Ont., has been appointed advisory officer on sanitation to the Canadian expeditionary force, and is leaving Valcartier this week with the first contingent.

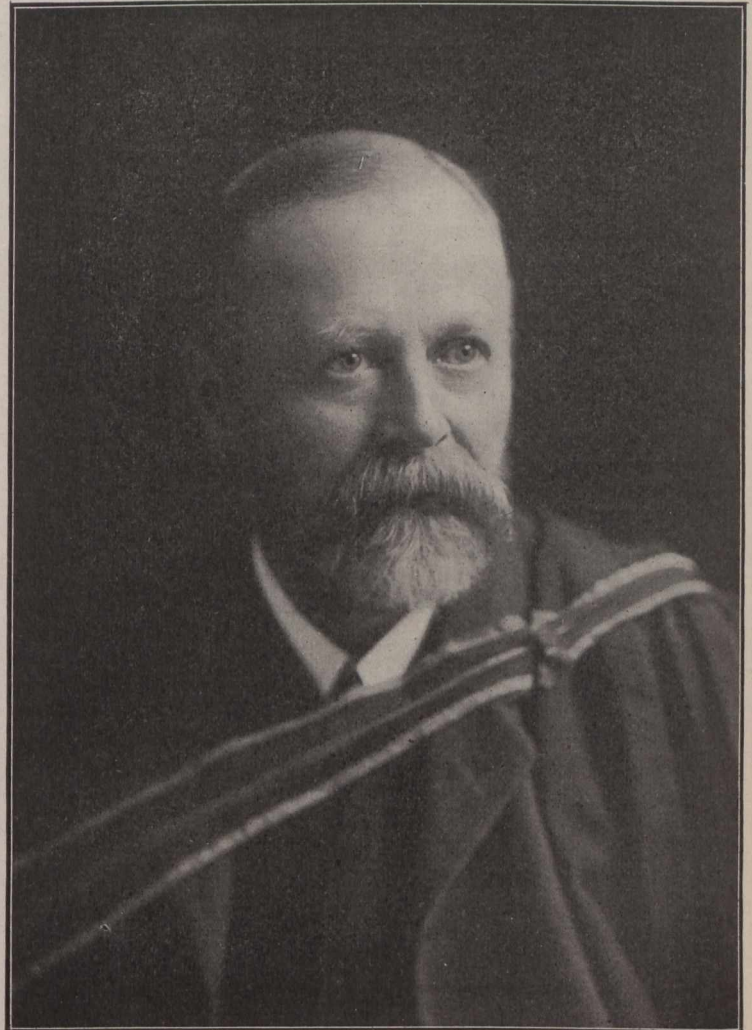
---

#### BOARD OF HEALTH APPROVES.

During the week ending Sept. 19th the Provincial Board of Health of Ontario approved of the waterworks extensions for the town of Smith's Falls, and of the construction of sewers in Smith's Falls and York Township.

#### W. H. ELLIS, M.A., M.B., ACTING DEAN OF ENGINEERING, UNIVERSITY OF TORONTO.

The Faculty of Applied Science and Engineering of the University of Toronto resumes activities this week under the direction of William Hodgson Ellis, M.A., M.B., as acting Dean, thereby temporarily filling the vacancy occasioned by the death of Dr. John Galbraith on July 22nd. Dr. Ellis' appointment to the head of the faculty council comes after a maximum period of connection with the institution, which, until 1906, had been known, since its organization in 1878, as the School of Practical Science. In fact, in the earlier seventies, he was a member of the staff of the College of



W. Hodgson Ellis, M.A., M.B.

Technology, the prototype of the institution. In 1878 he became assistant to the Professor of Chemistry, Dr. H. H. Croft. Later, he assumed the professorship in Applied Chemistry.

---

#### VICTORIA BRANCH, CANADIAN SOCIETY CIVIL ENGINEERS.

The Victoria branch of the Canadian Society of Civil Engineers recommenced its activities by a meeting on Sept. 17th. Committees were appointed and a program for the season's work discussed. On Sept. 19th the members of the Branch paid a visit to the works of the Pacific Lock Joint Pipe Company at Cooper's Cove, where pipe is being manufactured for the Sooke Lake water supply system.