

THE PIONEER INSPECTION COMPANY OF CANADA  
**Expert Inspection—Tests and Reports**  
**THE CANADIAN INSPECTION CO., Ltd.**  
 Inspectors to Dominion and Provincial Governments  
 Representatives at all important CANADIAN, AMERICAN and EUROPEAN WORK  
 Complete Facilities for all classes of Physical Testing & Chemical Determination  
**Main Laboratory; 601 Canadian Express Bldg., MONTREAL**  
 Canadian Branches: Amherst, N.S., Toronto, Hamilton, Winnipeg  
 T. S. GRIFFITHS, Pres. and Gen. Mgr. L. J. STREET, Vice-Pres.

**DOMINION BUREAU**  
**ROBERT W. HUNT & COMPANY, ENGINEERS**  
 Bureau of Inspection, Tests, and Consultation,  
 Chemical and Cement Laboratories  
 OFFICE AND LABORATORIES  
**CANADIAN EXPRESS, BUILDING, MCGILL STREET, MONTREAL**  
 CHARLES WARNOCK, Manager

A. L. Reading, Manager. T. C. Irving, Jr., A.M., Can. Soc. C.E., Sec'y  
**STANDARD INSPECTION BUREAU, Ltd.**  
**Inspecting and Consulting Engineers**  
 Expert Examination and Tests of Material and Workmanship. Inspection  
 of Steel Rails and Fittings, Cars, Locomotives, Bridges, Structural  
 Material, Cast Iron Pipe, etc. Resident Inspectors located at all important  
 Manufacturing Centres.  
**Head Offices: 1314 Traders Bank Bldg., Toronto**

**THE HILL ELECTRIC MANUFACTURING COMPANY**  
 approved types of Distributing  
 Boards and Cabinets  
**1560 St. Lawrence Street, MONTREAL**

# "SAMSON" Canada's Best

THE OWEN SOUND PORTLAND CEMENT CO.,

LIMITED

WRITE FOR PAMPHLET  
 "CEMENT, HOW TO USE IT, HOW TO BUY IT."

General Sales & Head Office, Owen Sound, Ont.

## EXPANDED METAL AND FIREPROOFING CO., LIMITED

New Office and Factories:  
 Foot of Fraser Ave., Toronto

SPECIALISTS IN  
 REINFORCED CONCRETE CON-  
 STRUCTION FOR 12 YEARS  
 SPECIFY SECTION  
 AND PHYSICAL QUALITIES



ENSURES RELIABILITY  
 Estimates, Catalogues, Etc.

Our Engineering staff, from now on, more than ever will make a point of  
 replying fully to enquiries from engineers concerning every phase of Re-in-  
 forced Concrete construction and design accompanied by plans where called for

**BEAMS, COLUMNS, FLOORS, TANKS, CULVERTS, Etc.**

The Standard Adjunct **STEELCRETE** To Concrete Plates Is

## EXPANDED METAL

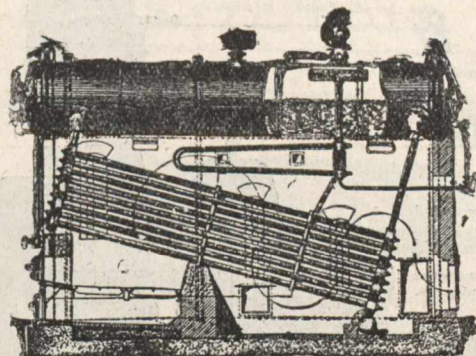
WE NOW MANUFACTURE

**Fenestra Steel Window Sash for  
 Power and Transformer Houses,  
 Factories, Etc., Etc.**

Obtain our estimates and compare wooden sash cost with

## FENESTRA STEEL SASH

# BABCOCK & WILCOX, LTD.



'B.&W.' Boiler Fitted with Superheater.

PATENT  
**WATER-TUBE BOILERS**

SAFETY - ECONOMY - DURABILITY

**Over 7,000,000 H. P. now in use**

HEAD OFFICE FOR CANADA—11 PLACE D'ARMES, MONTREAL

Branch Office—Traders Bank Bldg., Toronto

Our text-book STEAM sent gratis on request