

Exclusive New Apparel For Spring

Showing of individual models, in but one or two of a kind. Hand tailored garments of the most exquisite workmanship that is very distinctive.



TAILORED AND DRESSY SUITS

Severely Plain or richly embroidered. Some with novelty vest effects in tricotines, serges, poret twills, suede cloths, silvertone, navy, black, rooky, tan, Pekin Blue. Specially priced at

\$35 to \$59.75

SUITS AT \$25.00

Excellent values in Serges, all wool, in box effects and tailored models, all silk lined. These Suits were made to sell at \$30.00 and \$32.50; on sale at \$25.00.



Capes And Dolmans--Styles Original

A collection for every woman, charming navy blue and colors in velours, crystal cloths silvertones, Bolivia, Evoras.

\$19.75 to \$85.00

Our New Millinery Department

Smart hats in a variety of styles. Black Liseré trimmed with flowers, feathers, and fruits. Tams and large drooping shapes. Two hundred new Hats, just arrived from the center of fashions, on display.

\$5, \$10, \$18 to \$25

Children's Hats *HAITS* Specially Priced **\$3.00** **Misses' Hats**
\$1.25 to \$6.98 On Sale to-morrow. Regular \$5 and \$6.00 value **\$2.98 to \$7.50**
Millinery Department 2nd Floor.

New Dresses

Taffeta Dresses, \$12.75 to \$37.50
Georgette Dresses, \$19.75 to \$49.75
Satin Dresses, \$15.00 to \$25.00

New Waists

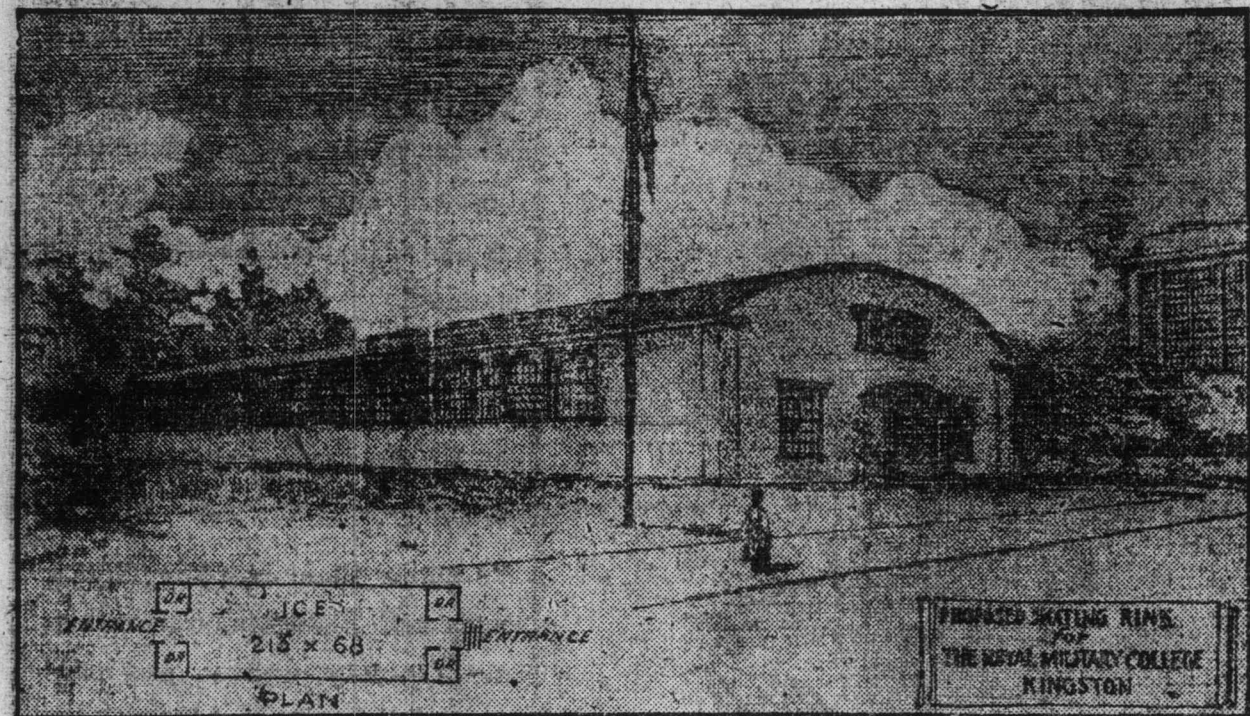
Voile Waists, \$2.10 to \$3.98
Crepe de Chine, \$3.00 to \$8.75
Georgette Waists, \$3.98 to \$10.00

Hosiery And Silk Underwear

Special Attention to St. Catherines Customers

MORTEN'S 359 THIRD STREET NIAGARA FALLS, N. Y.
Between Falls Street and Niagara Street

NEW USE FOR AVIATION SHEDS



AFTER many years of waiting a covered skating rink has been secured for the Gentlemen Cadets at the Royal Military College at Kingston, and the acquisition of this building will give a great impetus to our national game—"hockey." Hitherto the Royal Military College hockey teams have had to get along the best they could, using the open ice on the lake and occasionally the city rink at Kingston. These limitations interfered materially with the quality of the game. On the demobilization of the Royal Air Force in Canada and the abandonment of the aviation camps at different points some suitable buildings, originally designed for and used as flight sheds (or aeroplane hangars) became available, and through the kindness of Sir Joseph Flavell, Bart., Chairman of the Imperial Munitions Board, under whose direction these aviation camps were originally established, two of the night sheds, each 120 feet long by 68 feet wide, were secured to form the basis of the new covered skating rink. The many friends of the Royal Military College were not slow in taking advantage of this opportunity in coming forward to assist in carrying out the idea. The Canadian National Railways, through the courtesy of Mr. D. B. Hannan, its president, and the Grand Trunk Railway System, through the courtesy of its president, Mr. Howard G. Kelley, have undertaken to free-tright the material of the sheds from Camp Mohawk to the point nearest to the Royal Military College, to Kingston. Sir Herbert S. Holt, who is deeply interested in everything that makes for the welfare of the Royal Military College, has generously financed the undertaking, and a contract for the removal and reconstruction of the flight sheds above referred to, has been let to the Kingston Construction Company, who now have the work in hand. The Minister of Militia and Defence has approved of a site within the college grounds on which the covered rink will be erected. Mr. F. L. Wanklyn, General Executive Assistant of the Canadian Pacific, who is also deeply interested in the welfare of the college, has taken charge of all the work in connection with the carrying out of the scheme. The rink, when completed, will be substantially as shown in the above illustration. The main building will be 240 feet by 68 feet wide, and the height from the underside of the roof trusses to the ice level will be 18 feet. Commodious dressing and locker rooms, 25 feet square, will be provided at one end, over which a gallery for spectators, capable of seating 300 persons, will be provided. The main sheet of ice will be 215 feet by 63 feet wide and this will, in the opinion of well known hockey experts (Messrs. "Riley" Hern and Col. Walter Maughan) make a most satisfactory hockey rink. The building will be well lighted by windows all round and with electric lights for the evenings. The outside will be neatly finished in cement rough-cast and present a generally attractive appearance. The originators of this project have received many congratulations from a host of friends interested in the welfare of the Royal Military College.

ONTARIO'S BIG CROPS

Ensure Equal Crops Next Year by Attention to Seed Grain.

Larger Profits From Live Stock Made When Stables Are Given Their "Clean-up"—Live Stock Thrive Better In Dry, Well-Ventilated Stables.

(Contributed by Ontario Department of Agriculture, Toronto.)

ONTARIO is fortunate this year in having a good supply of grain in almost all classes of crops. The more grain there is to select from, the better chance there is to get the very best seed for sowing in the spring. For many farmers forget the seed supply for next year's crop until most of their grain is fed or sold.

If the best of this grain was set aside for seed at threshing time or taken from the grain bins before any of it was fed or sold, there would be less work of seed preparation in the spring and a foundation provided for better seed than is often sown.

Small, shrunken or broken seed has a feeding value nearly equal to that of large plump seed. The following results of seed selection experiments conducted at the Ontario Agricultural College at Guelph will show, however, that there is very great difference in the value of these for seed purposes:—

Selections.	Weight per Measured Bushel (lbs.)	Tons of Seed per Acre	Bushels per Acre
Oats—			
Large Plump Seed	33.2	1.9	62.0
Medium-sized Seed	32.2	1.8	54.1
Small Seed	31.8	1.8	46.8
Barley—			
Large Plump Seed	49.5	1.5	53.8
Small Plump Seed	48.8	1.5	51.4
Shrunken Seed	49.1	1.4	49.0
Broken Seed	48.6	1.3	43.2
Spring Wheat—			
Large Plump Seed	59.1	1.4	21.1
Small Plump Seed	58.3	1.3	18.6
Shrunken Seed	56.9	1.2	16.7

(Oats were tested seven years barley six, and spring wheat eight.) Selecting the best seed from that which the farmer has available will not only provide large plump seed for sowing which will produce the most vigorous plants and the largest yield of best quality, but it will very largely eliminate any weed seeds which may be in the grain. — Dr. C. A. Zavitz, Ontario Agricultural College, Guelph.

Clean, Dry and Ventilate Stables. Cleanliness, dryness and good ventilation are hygienic conditions very desirable in the housing of all kinds of live stock. Horses, cattle, sheep, hogs and poultry all do better and are less liable to contract infectious and contagious diseases when kept under such conditions than when dirt, dampness and poor ventilation are found in the stables in which they are housed. Undoubtedly, outbreaks of infectious and contagious diseases do occasionally occur in the best built and best kept stables, but the danger of these spreading is much less than where unhygienic conditions prevail.

Without doubt good stock has been produced under conditions that were not of the best, but the chances of producing and maintaining good healthy stock are much greater where cleanliness, dryness and good ventilation in the stables are the order of the day.

Dirt of all kinds, whilst it does not itself produce disease, is liable to harbor and foster the bacteria or other germs that cause infectious disease, hence, so long as it is lying around inside the stables it is a source of danger to the stock.

If there is one class of stable more than another in which cleanliness is desirable it is the dairy stable. Milk is an ideal food for many varieties of bacteria as well as for human beings or live stock, and many varieties of bacteria are always present in stable dirt. Consequently, when dirt or stable dust gets into milk, many contaminating bacteria get in with it. It is the milk that causes it to spoil either by souring or putrefaction. Consequently, one step in the production of good clean milk is to have it produced where there is little danger of dirt or dust getting into it.

Dampness is a great agent in the spreading and fostering of disease. Perhaps the one disease that it is most liable to induce is pneumonia. Many hogs are lost annually as a result of contracting pneumonia through being kept in low-lying, damp quarters. Dampness due to bad ventilation is very conducive to the development of various lung troubles with all kinds of stock. The damp stagnant air in badly-ventilated stables lowers the vitality, depresses the blood circulation and so puts the animals kept under these conditions in such a state as to make them ready subjects for the development of such diseases as influenza, pneumonia, tuberculosis and others. — Prof. D. H. Jones, Ontario Agricultural College, Guelph.

Binder for Stone Road. If a broken-stone road gets very heavy traffic then it must be laid with a tar or asphalt binder to keep the pieces of stone from grinding on each other and finally powdering up under traffic.

Time to Use Road Drag. If the roadway is full of holes or badly rutted the drag should be used once when the road is soft and slushy.

Know that the ban against the importation of unset diamonds, into Canada has been lifted.

Electric Stoves!

—YES, WE HAVE THEM—
The "Moffat" Line

Let Us Demonstrate These to You at Your Convenience.

Estimates Cheerfully Given on All Wiring Necessities.

Clifford Electric
21 ONTARIO STREET



Featuring dainty New Waists to be worn with Spring Suits, Gorgeously with head trimmings is most popular.

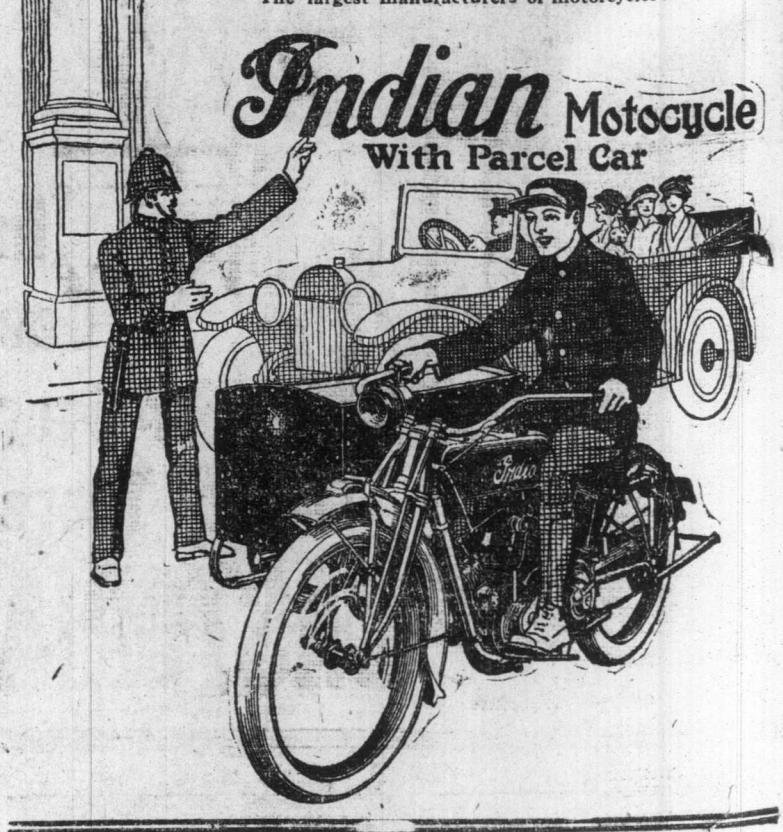
The Indian —the veteran machine

Through four years of war—four years of supreme test—four years in which the inventive and mechanical power of the nation were taxed to the utmost—the Indian Motorcycle has been a vital physical force. Steady-going, adaptable, trustworthy and enduring, this king of the motor field filled a great need in the nation's service—filled it in a way that has won universal esteem. In its war-time record the superlative merits of the Indian stand out in relief. Over 60% of the motorcycles used by the American Government in war were Indians. The economic lessons of the war are illuminating and far reaching. It requires little foresight to realize the possibilities of the Indian and its value to the business world. The magnitude of present demand is evidence of its growth.

Now that the war is over we are turning the strength of our production to meet the great public demand. No effort is being spared to supply dealers with their full quota of machines, also Indian Bicycles. The veteran machine that upheld the nation in war is restored to the public.

The outstanding features of our big Indian Power-plus are —
World-famous Powerplus motor that has no equal.
Renowned and exclusive shock-absorbing Cradle Spring Frame and Fork.
Light Twin Indians, too.
And the roomy, handsome, coach-built Indian side-cars. Go now to the Indian dealer and have a demonstration.

GILMORE & CO.
250 St. Paul St. St. Catharines Ont.
HENDEE MANUFACTURING COMPANY,
SPRINGFIELD, MASS.
The largest manufacturers of motorcycles in the world.



BAULKED ATTEMPT TO "USURP" SUNDAY

Mention is made in the annual report of the Lord's Day Alliance of the attempted "usurpation" of the Lord's Day by the Condensed Milk Industry. Had this been successful, it would have brought into our Sunday the entire dairy business, involving cheese and butter factories," says the report, which points out that the Federal Food Board had delivered judgment declaring that the work was not necessary under ordinary circumstances. "Their concession to this industry for the past year only to accept delivery and to operate on Sunday for the period between May 15 and September 15, is the clearest pronouncement, although indirectly given, that at other times this Sunday business is without justification," it is pointed out.

MAY REMOVE BODY OF EDITH CAVELL

London, April 11.—(British Wireless Service)—Arrangements are being made, it is understood, for the removal to this country of the body of Edith Cavell, the English nurse, executed by the Germans at Brussels in 1915. The burial of the body in English soil will be made the occasion of an extensive public ceremonial.

PREMIER HEARST ILL

Sir William Hearst was absent from the House yesterday because of illness, but his secretary gave the assurance that the Premier would return to his office today.

It may interest those who are kicking at the price of butter, to

FRIDAY, AP
"If I
Litt
Time
someone
capital b
make m
tion."
Resolve
Fortune
of your s
count with
THE
Bank
Paid-up Capital
Reserve Fund
Resources

BO
ARMORIES,
JACK LONE
St. Catharines
DICK HYLAN
Erie, Pa.
DICKIE DUN
Buffalo, N. Y.
WILLIE HEV
Buffalo, N. Y.
Auspicio
Balcony, \$1.00
Tickets On Sale
Hynes', Tim
Peter Leith's

SA
Save yourself the
lecting your sale
We will look aft
the amount paid
Consult the Man
THE DO
Drafts on
Temporari

Security Lo
26 JAMES
CAPITAL AUTHO
CAPITAL SUBSCR
RESERVE.....
ASSETS OVER...
Pays 3% Per C
Trustees a
No Notice
Money to loan on
Office open until 4 p.

Bank
YOU
be
every c
efficient
Our fa
dispos
THE C
OF
ST. CATHARINES BR
THOROLD BRANCH
NIAGARA-ON-THE-LA