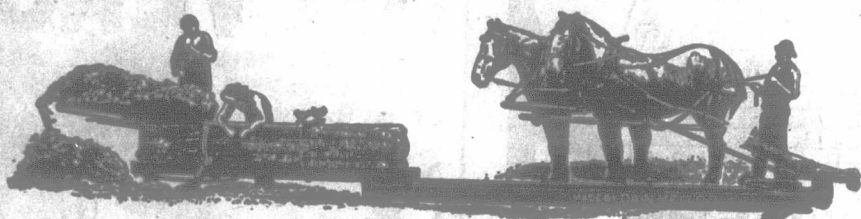


Everything Substantial Must Have a Good Foundation.



THE DAIN HAY PRESS

has a good foundation. The frame is channel steel solidly riveted together.

The Dain Press will do more tons per day than any other press, notwithstanding what irresponsible opposition agents say.

The Dain Press will make heavier bales, and not strain, get out of order or break.

You can't afford to make the mistake of buying any other machine.

Great Capacity. Great Durability. The two qualities most desired in Hay Presses, and found only in the Dain.

Write in to-day. Catalogue for the asking.

THE DAIN MFG. CO., PRESTON, ONT.

The Fairchild Co., Winnipeg, Man.,
Western Agents.

You Never Can Make Butter With the Butter Fat that's Lost

Either in the skim milk or on account of churning thin watery cream.

Cans, pans and cheap machines to the rear

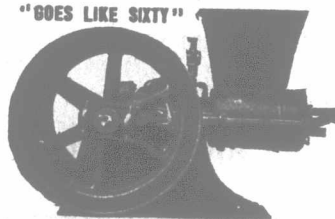
DE LAVAL CREAM SEPARATORS

ARE BEST.

173-177 William Street,

MONTREAL.

"DOES LIKE SIXTY"



For \$150.00 To introduce our famous
GILSON GASOLINE ENGINES

Strong enough to saw wood, grind feed, and run all kinds of machinery. **FROST PROOF.** Starts readily in coldest weather. Write for catalogue—all sizes. **FREE TRIAL.**
GILSON MFG. CO., G. Park St., Pt. Washington, Wis.

When Writing Advertisers Kindly Mention this Paper.

Last Mountain Valley Lands

We own thousands of acres of **Choice Selected Land** in this district, which is in the heart of the

GREAT WHEAT PLAINS

OF

SASKATCHEWAN

Ample TIMBER for All Purposes

Prof. Thos. Shaw, after personal inspection, writes: "This rich and beautiful farming section lying in the vicinity of Last Mountain Lake, embraces one of the finest areas in the Northwest. The land is undulating in this region, mostly open prairie. The soil is rich black vegetable loam, from one to two feet deep, and is underlaid with a clay subsoil. Frost, to injure the wheat, is virtually unknown. Being thus favored so highly by nature, it is not surprising that the production of wheat in this region is phenomenally high; in several instances forty to forty-five bushels per acre have been reaped. Oats, Barley, Flax and all small grains yield relatively as good as those of wheat. Potatoes grow most luxuriantly. Two or three years ago there were not more than thirty-five settlers in the entire area; now there are over a thousand, and others rapidly coming in."

Send 25c. for our beautiful new photographic souvenir, entitled "The Lake and Lands of Last Mountain Valley," which is not only a work of art, but a book of authentic information. We will also send Atlas of Canada, Maps, etc.

Wm. Pearson Co., Limited,
304 NORTHERN BANK BUILDING, WINNIPEG.

"PAGE FENCES — WEAR BEST"

Made of High Carbon Wire,—we'll prove it to you. COILED—not crimped. This makes it still stronger in service. It stays taut. Painted WHITE over heavy

THE PAGE WIRE FENCE COMPANY, LIMITED,



galvanizing—rust proof. Experienced dealers to erect it. Leads all in sales 209—as in merit. Get illustrated booklet and 1907 prices before buying. Walkerville, Toronto, Montreal, St. John, Winnipeg