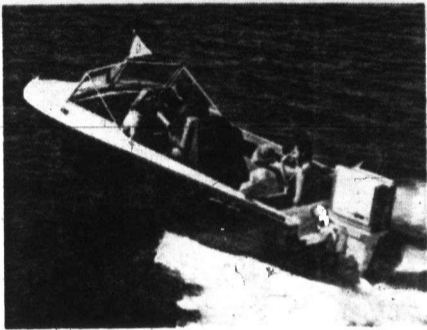


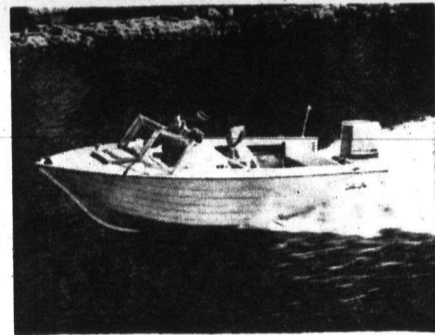
COME SEE WHAT'S NEW FROM



CHESAPEAKE 18'
FIBERGLASS

A salty Down-Easter . . .

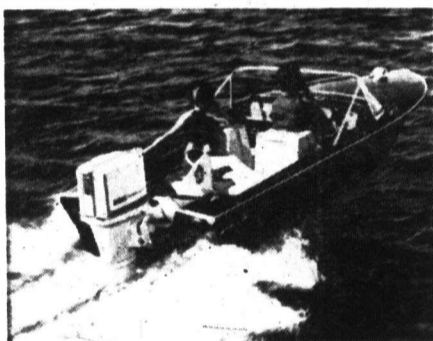
. . . the briny, brawny Chesapeake combines cuddy-cabin shelter and lapstrake sea skiff design with the exceptional toughness of Chrysler's exclusive Fiberglass Foam-Pac hull. With her broad beam and ample freeboard, she's plenty seaworthy for 'longshore ocean cruising. And with "tiltable" outboard power she can explore just about any cove that will float a beachball.



MERALLION II 16'
ALUMINUM

Dashing new design with skiff and clipper lines . . .

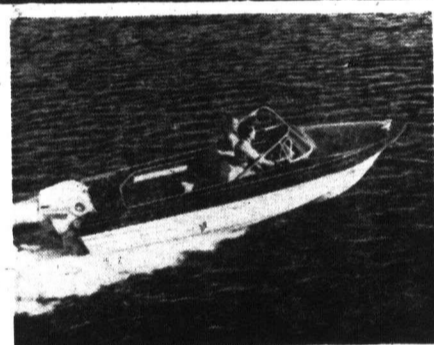
. . . gives this all-new, all-purpose runabout a profile that's as pleasing as her personality. She's roomy—with a big, deep-sided cockpit that makes for peace of mind when youngsters are aboard. Has lots of storage space, too, for jackets and water skis . . . picnic baskets or fishing tackle. The seat-lounges give plenty of versatility in the seating department, and you get the convenience of a walk-thru bow hatch.



MAYPORT 16'
FIBERGLASS

Swift, suave and sophisticated . . .

. . . in fact, too sophisticated to go bounding over the billows like many 16-footers. Instead, Mayport's deep "V" Foam-Pac hull spreads the billows out like pillows for an easy, cushioned ride. To balance the ultramodern interior layout and hull design, our marine architect paid tribute to tradition with the classic, up-swept bow deck. It flairs into the protective cockpit coaming. Gives the whole boat a distinctive character.



MUSTANG 15'
FIBERGLASS

Luxury laced with lightning . . .

. . . that's the Chrysler Mustang! To appreciate this one you really have to hop in, cast off, blast off and feel the way her Quad-Chine hull rises to its special, auxiliary planing surfaces and reaches for the horizon. Available in outboard and I/O models. Both are lavishly appointed and seat four persons on back-to-back units.

**TAKE TO THE WATER THIS SUMMER
IN A BRAND NEW CHRYSLER BOAT**

Choose from 21 sea-worthy craft from the fun-packed Chrysler Fleet. All designed to give you the most in water fun. Every boat, from the smallest runabout to our sleek sailboats and cruisers, is built to meet the needs of your favorite water sport — whether you like to fish, ski or just "boat" for the fun of it. Each Chrysler boat has been designed to give you the best in water performance and the maximum in water safety. Come in today and see what's new from the Chrysler Crew. Then take to the water in your brand new Chrysler boat.

PICKETT'S TV & MARINE

93 DUNDAS ST. E.

COOKSVILLE

277-3156

First in Sales



First in Service

