

Horsman: a normal return

I note with some concern two recent letters to the *Gateway* incorrectly indicating that the Government will receive only a 5.3% return on the investment of the \$100 million Alberta Heritage Scholarship Fund to be recommended to the Legislature this spring. It is true that approximately \$5.3 million will be awarded in scholarships for the benefit of Alberta students in the first year of operation of this new program, however, this amount does not reflect the total return on investment of the \$100 million principal. The actual return on investment on the principal will be much greater than 5.3% and this additional amount is to be reinvested in the fund to increase the principal.

The Government decided not to allocate the entire earnings of the fund in the first year in order that experience in the operation of this new program may first be gained with a view to increasing

the size and number of awards over time.

Thank you for allowing me this opportunity to clarify that the Alberta Heritage Scholarship Fund will receive not 5.3%

interest, but a normal rate of return for Heritage Savings Trust Fund investments.

James D. Horsman
Minister of Advanced
Education and Manpower

Groveling in the gutter

Re: the *Gateway*, Thursday November 6, 1980 edition: The bold-faced caption which appeared under your front-page picture of a Professor and two Ministers of the Crown seemed to achieve an all-time low for obscenity in a publication. This was my thought until I turned to page 5 and read the letter pertaining to I know not what and signed by Ross MacDonald, Arts

III.

If your goal is to improve yourselves and your journalistic capabilities, you must surely realize your obligation to provide readers with substantial news and comment. This precludes the use of offensive language which says nothing constructive. It does, however, speak volumes as to the mentality of the editors.

(Mrs.) Valerie Killeen

Input - we need input

As many students are now aware, especially those students living in North Garneau, new student housing is proposed for the North Garneau area.

Consultants are working on it now, and they need input. They want to know what kind of housing students want, what generalities, ideals and specifics.

Whether or not you now live in North Garneau, your input is extremely valuable. Things they are looking at are: size of home and accommodation for how many, self-contained units or not, size of bedrooms, number of

bedrooms, size of kitchen, living area, recreational facilities, storage space, yards, balconies, trees, parking, etc.

If you want to have input, just jot your ideas down and take them to the executive office, room 259 SUB. Your input on this is necessary and invaluable.

Kris Farkas
VP External

More letters
on page six

A word for the wordy

Letters to the *Gateway* should be a maximum of 250 words, regardless of how much you normally run off at the mouth. The fact that you are hot under the collar doesn't impress us in the slightest. Also, spastic, disjointed and semi-intelligible writing is pure migraine to read, and should be saved for your English professor, who deserves it. Thirdly, the statement "I think" is a

subjective hypnosis, and considering the evidence — 3,877 rubber-stamp letters on every subject — a rather untenable one. We reserve the right to chop or destroy any offending correspondence, and if you persist in sending us such outrages, *Gateway* special assistants Vito and Ernie will take whatever measures are necessary to ensure that you sin no more.

PRE-MED ORIENTATION SEMINAR

Thurs., Nov. 20, 1980 • 4 PM
EDUCATION NORTH 2-103

This seminar is designed for students who have questions, hesitations, etc. about medical school or their pre-med program.

Presenters: Ms. Sandy Neil, Admissions Officer
Faculty of Medicine

Dr. Dave Beatty, Associate Dean
Faculty of Science

Dr. Dick Kimmis, Student counselling Services

STAFF MEETING

Thursday,

4:00 p.m.

The Gateway
Room 282 SUB

SPORT JACKETS

This Fall We've Got It All!

Cord Jackets

in beige, wine, black
and chocolate brown

\$135—

Camel Hair Blazers

\$195—

Harris-Tweed Jackets

\$165—

Herringbone Tweed Jackets

with elbow patches

\$165—

Applebee Shirts

from **\$22—**

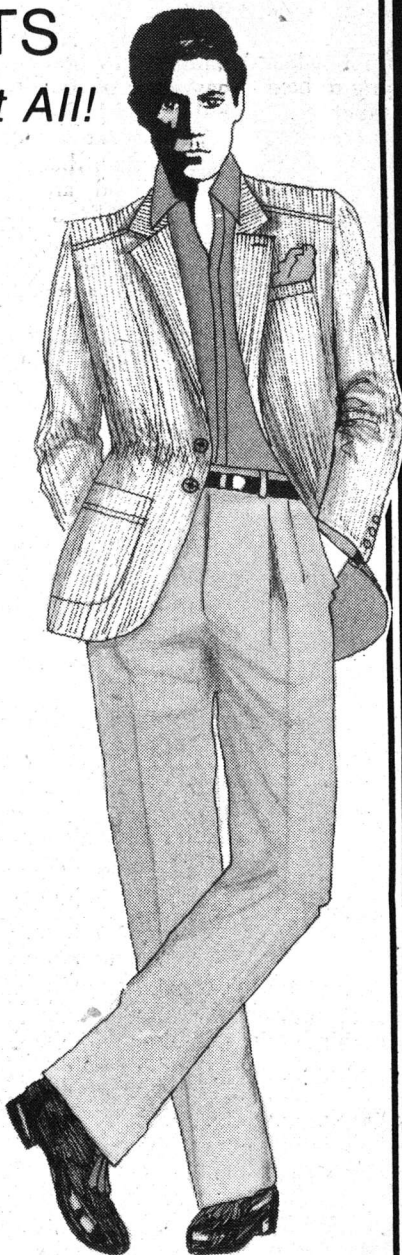
The
Colony

Clothier to
Ladies and Gentlemen

10187-104 St.

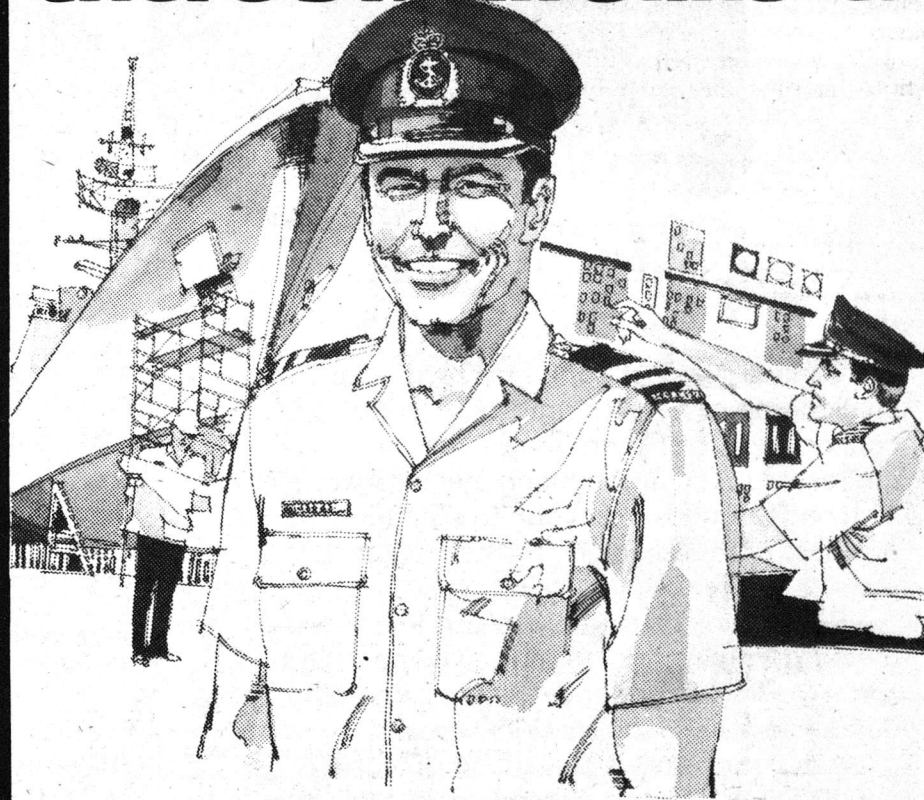
423-1117

'SERVING THE UNIVERSITY SINCE 1970'



**If you've
got what it
takes...**

there's no life like it.



**Engineer
a great career.
Go Sea Operations!**

In today's sophisticated Canadian Armed Forces, Maritime Engineering officers work with jet turbine engines, computers, electronics. In all of these specialized functions you can go far... in challenging projects that could take you to many parts of the world. If you're into engineering, put your degree to work in Naval Operations. Ask us about you.



**The
Canadian
Armed
Forces**

Write to The Director of Recruiting and Selection,
National Defence Headquarters,
Ottawa, Ontario. K1A 0K2

OR

Commanding Officer
Canadian Forces Recruiting Centre
10414 - 103 Avenue
Edmonton, Alberta T5J 0J1

WRZ 9