

## "FORGET DIFFERENCES"

### Mr. Hanna Made Strong Appeal To Women's Institutes

Hon. W. J. Hanna, Food controller, addressed the Sixteenth Annual Convention of the Women's Institutes of Ontario at Toronto on November 21. He asked the women to forget minor differences and to co-operate for food conservation.

"The suddenly disclosed critical food

situation in France and Italy made a change necessary in our plan of shipping food supplies to Europe," he said. "We had intended to release the amount of extra supplies required of us gradually during ten or twelve months. But we have just simply struck our pen through all former arrangements."

"Some of you were surprised when you read the list of articles in the embargo of the United States against Canada, the other day. This embargo was put on for a purpose, and Canada has put a like embargo on these goods also, so that nothing in the list can be shipped either way without a license. It is now possible to trace the goods from the point where they originated to their destination."

Mr. Hanna said that, by the recent order in council prohibiting the use of grain of any kind or any substance which could be used for food for the distillation of potable liquors, the "lid" had

been "put down tight" in this country. The food controller stated that the supply of hogs in the countries of the Western European Allies was 30,000,000 under normal, while the entire number of hogs in Canada was only 8,500,000. The shortage in Europe was thus about ten times Canada's total supply. The United States was aiming to increase hog production by 25 per cent Canadian hog producers must do their share. The initial steps had been taken and a greater hog production campaign was already under way.

"The women of the Institutes can do a great deal to encourage the work," said Mr. Hanna.

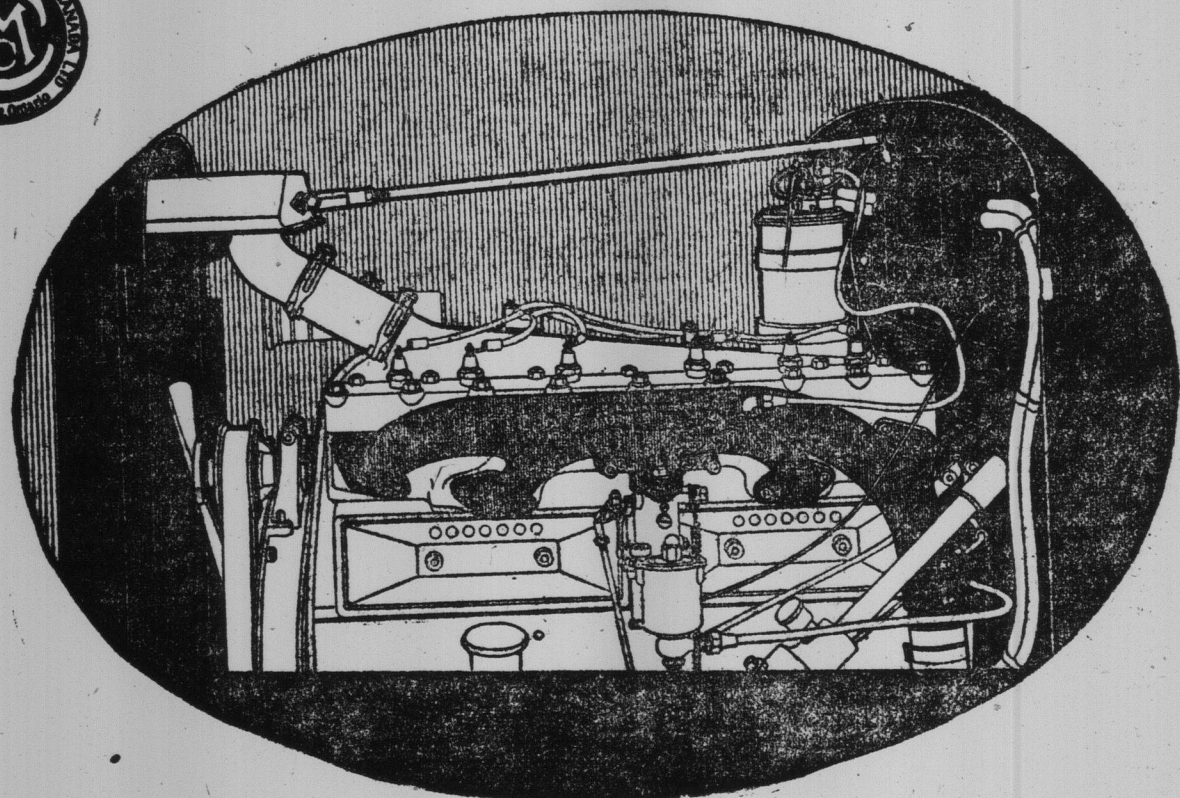
St. John has answered quickly and well the cry for help from Halifax. The same Macedonian cry, "come over and help us" is wafted from the trenches by our gallant boys. This is the golden opportunity of the Canadian elector.

### GRANDMOTHER, THE PIONEER PHYSICIAN

In the good old pioneer days of this country, when drug stores were few, grandmothers' root and herb remedies were what were always depended upon to bring relief for family ailments, and some of grandmothers' root and herb remedies are now found upon the shelves of the modern drug store, and are among the best and most widely used prepared medicines.

Such is Lydia E. Pinkham's Vegetable Compound, a botanic remedy, originally prepared by Lydia E. Pinkham, of Lynn, Mass., over forty years ago, and which has brought health and happiness to more women in America than any other medicine.

Effie (apprehensive of an air-raid)—Hark! What's that noise? Renee—Why, silly, that's only the singing in my ears!—Passing Show.



## The Coming of a GREAT ENGINE

It Makes High Power Out of Low Grade Gas

Men who drive cars are face to face with a condition that becomes more and more serious each day.

That condition is the constantly declining grade of gasoline.

Nearly every engineer has said goodbye forever to high-grade gas.

For the moment, and possibly for all time, multi-cylinders, counter balanced crankshafts, and little tricks with valves give way in engineers' discussions to the "gas problem".

Every alert engineer is bending his utmost to make "one drop of gas now do the work of two".

Just as great situations produce great men, so out of this condition has come a great engine.

It is a Chalmers.

It makes high power out of low grade gas.

Compared with other engines of the same size or thereabouts, it shows:

More power More rapid acceleration  
Greater economy Greater length of life  
Greater smoothness

And an amazing ability to start quickly on a cold day, and to "warm up" without delay.

The Chalmers engine is a simple one. That is one reason why it is so good.

In many engines of the moment the gas passes on its way from the carburetor to the cylinder through a tunnel, which runs all the way through the engine block.

Before the gas gets to the cylinder it is forced to turn many sharp angles and does not become completely mixed with the air.

This results in raw gas running into not only one but all the cylinders, particularly when the car is cold, and especially when running for the first five or ten miles.

In the case of the Chalmers engine this type of intake manifold has been completely eliminated.

A new manifold termed "The Ram-horn," has been constructed of simple piping. It is on the exterior of the engine. It is a manifold of easy curves so that there are no sharp corners for the raw gas to lodge against and be pushed into the cylinders.

The next development was to give the gas the proper amount of heat after it came from the carburetor.

What is termed a "hot plate" is built in at the top of the throat of the carburetor so that the gas coming straight up from the carburetor hits the "hot plate", the dimensions of which have been worked out very scientifically, and then passes around the easy curves of the smooth manifold in perfect state of mixture and at the proper temperature to each of the cylinders.

The case of this Chalmers engine has been proved.

1. On August 1 and 2, Joe Dawson drove a Chalmers equipped with this same engine 1,898 miles in 24 hours—faster and farther than anyone ever before had traveled on land, sea or air.

If there's a flaw in pattern, or part, a solid day of bitter, brutal speed will find it.

2. There are over 1,000 Chalmers containing this engine now in use. They check up past all expectations.

Therefore, the Maxwell Motor Company, which has leased The Chalmers Motor Company, has put its O.K. on this engine, and accordingly on the Chalmers car.

90 per cent. of any automobile is the engine; and no car can be a bit better than its engine.

So you are safe in writing your check for a Chalmers.

*Walter E. Brandeis*

President and General Manager  
Chalmers Motor Car Company

TOURING CAR, 7-PASSENGER	\$1900	TOURING SEDAN	\$2600	TOWN CAR LANDAULET	\$4350
TOURING CAR, 5-PASSENGER	\$1785	CABRIOLET, 3-PASSENGER	\$2350	LIMOUSINE, 7-PASSENGER	\$4100
STANDARD ROADSTER	\$1785	TOWN CAR, 7-PASSENGER	\$4100	LIMOUSINE LANDAULET	\$4350

ALL PRICES F.O.B. WALKERVILLE SUBJECT TO CHANGE WITHOUT NOTICE

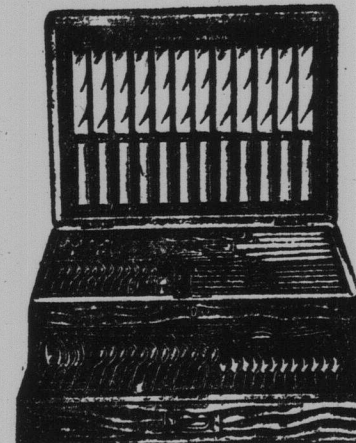
Motor Car and Equipment Company,  
St. John

## NOTHING BETTER THAN CUTLERY AS A GIFT

Combining as it does attractiveness with usefulness and durability.

We have a full line of the best Cutlery on the market, both in Sets and Individual Pieces.

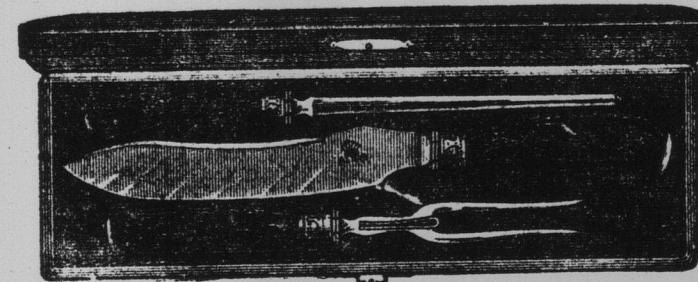
Make Your Selection Now!



### Cabinets of Cutlery

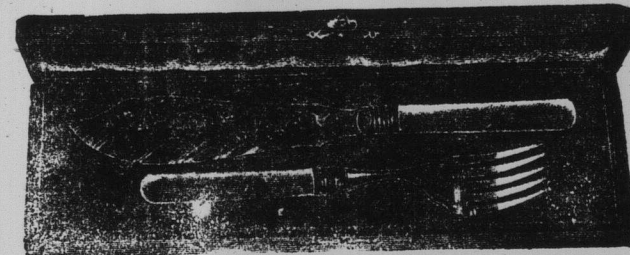
Celluloid and Pearl Handles with Best Steel Blades and E. P. Forks

6 Dessert Knives and Forks	\$9.00 to \$12.00
6 Table Knives and Forks	6.75 to 15.00
6 Each Table and Dessert Knives and Forks	15.00
12 Each Table and Dessert Knives and 5-piece Carvers	25.00 to 30.00
6 Each Table and Dessert Knives and Forks (Pearl Handles)	55.00



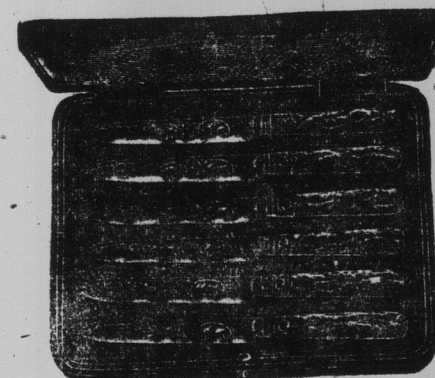
### Case Carvers

Stag Handles, 3-Piece	\$3.50 to 10.00
Stag Handles, 5-Piece	7.50 to 12.00
Celluloid Handles, 3-Piece	2.50 to 9.00
Celluloid Handles, 5-Piece	10.00 to 13.00
Pearl Handles, 3 and 5-Piece	7.00 to 23.00



### Fish Carvers

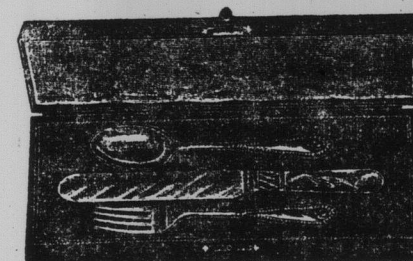
Pearl Handles	\$5.00 to 12.00
Celluloid Handles	4.00 to 6.00



### Fruit Knives

Half Dozen to Case

Pearl Handles	\$4.75 to 7.50
---------------	----------------



### Child's Sets

Pearl Handles	\$1.75 to 3.50
Celluloid Handles	1.00

T. McAVITY & SONS, LTD