

OKANOGAN COUNTY MINING.

Tunnel Being Driven a Mile and a Half Through the Heart of Palmer Mountain

TO INTERSECT THIRTY VEINS.

Other Development Being Done by Toronto, Spokane and Pittsburgh People—War Eagle and Black Bear.

Pacific Mining Letter No. 24—Relating to the Palmer Mountain Country.

Loomis, Wash., Oct. 21.—By climbing out of the Okanogan Valley in which Oroville, mentioned in my last letter, is situated, and driving 20 miles in a westerly direction through Okanogan County, I have reached the Palmer Mountain country, a mineral district which Toronto, Montreal, Spokane and Pittsburgh people are doing extensive development work on a number of quartz propositions.

Loomis, the central point in this belt, is a settlement of 200 people, which before the general financial crash of the early '90s experienced a mining boom on a small scale, and it is now springing into prominence again. It has the richest atmosphere of the small American mining camp, and constitutes a stamping ground for a little crowd of the horned rangers and would-be "bad men." Several hotels, saloons and general stores are now driving a lively trade.

A Mining Engineering Feat.
The chief interest in the camp centres in an undertaking of considerable note from the mining engineer's standpoint, referred to as the tunneling of the Palmer Mountain. From the valley of Okanogan Creek, near Loomis, Palmer Mountain rises to a height of 4,000 feet, and some 5,000 feet above the sea level. Upon the summit of this height between 40 and 50 veins of quartz are exposed, and it is to intersect these veins that the tunnel, being driven from the side hill, is being driven. The tunnel is now in 2,400 feet, has already attained a depth of 1,000 feet. It is to be driven in all 8,000 feet until it comes under the apex of the mountain where it will give a "back" on the ore bodies there tapped of 4,200 feet. In other words the tunnel, if successful, will be one and a half miles long and will give a maximum depth of three-quarters of a mile of ore.

Work on a Large Scale.
Judging from the dimensions of this tunnel and the character of the work being done in it, it is a permanent affair. It is from 8 to 10 feet in width and is to be double-tracked to facilitate the rapid removal of the ore as it is broken down in an incline towards the mouth of six inches in every 100 feet. This dip enables the ore to run by gravity, and the slight incline also serves to drain the workings.

Under a trip through the tunnel in company with Mr. John Boyd, the originator of the whole undertaking and present general manager of the company. We went in at night when the heavy cars were rushing out of the rock broken down during the day in the tunnel.

In the Tunnel.
The examination of the interior of this big working is an interesting operation. It is a cut through country rock of granite and gneiss interspersed with thin layers of quartz. The tunnel has cut about a dozen of the ledges which are outcrops on the surface and are less than a foot thick. The veins thus already intersected appear to vary from a few inches to 40 feet in width, the wider ledges consisting of bodies of quartz interbedded largely with masses of country rock.

The quartz carries iron pyrites and some free gold. As to values I am informed by the management that an average of the ore taken from the thirty outcrops on top of the hill went about \$10 to the ton. In mentioning these values, however, I am simply quoting others.

Also Mining Shifting.
While the company is driving this tunnel and drifting on some of the larger quartz workings, which have been cross-cut by the tunnel, work is also being carried on upon top of the hill. In other words, the shafts are being sunk upon two or three of the ledges. These shafts it is the purpose of the management to ultimately connect with the tunnel, but in the meantime they will be used to take out ore to be milled. Some of the best values on the company's properties have been found on ledges which outcrop near the apex of the mountain, and it is upon these that the shafts are being sunk. Pending the intersecting of these ledges by the tunnel, which will not occur for some time to come, Mr. Boyd will construct a small steam power for his ore while the management work is still being pushed ahead.

To Operate by Water Power.
The Palmer Mountain company's property is equipped with good cabins, engine, boiler, a small compressor plant and an excellent ventilating apparatus. It is the purpose of the corporation to substitute water power for their steam plant. Rights have been secured, on Toits Conlee Creek, where 3,000 inches of water and a drop of 570 feet can be obtained. Mr. Boyd states

that he can develop 2,000 horse power from Toits Conlee Creek, and with it he will run all his machinery and an electrical line besides, if necessary. The substitution of water for steam power should considerably reduce the expense of operation, for wood costs the company \$3 a cord at the mill.

Two interesting propositions upon Palmer Mountain are the Black Bear and War Eagle properties. These two locations lie about half way up the height, being surrounded on sides by the Palmer Mountain Company's properties.

These holdings, the control of which is passing into the hands of Toronto people, represented by Mr. James Parks, had some development work done upon them some years ago, but those owning them got into litigation and operations were stopped. Before work ceased, however, a five-stamp mill was erected by the owners of the Loomis, and a large amount of money was taken out of a comparatively small quantity of ore. Those who have now control of the location are redrawing the mill, and it will shortly start running again. The Black Bear ore, which is about 100 feet from the War Eagle, is a single shaft. A new sinking plant is now being installed and development operations will also be commenced on the War Eagle, which is about 100 feet from the Black Bear. The Black Bear and War Eagle are the names of the two other properties in the neighborhood of Loomis, upon which more or less development work has been done.

Pittsburg People Interested.
Another property in the Loomis District, known as the Gold Hills, and situated near Palmer Mountain, was some time ago bought by a Pittsburg syndicate. The option was good for eleven months, but after working upon the property for 60 days, the syndicate was not satisfied with it, and they took it up, being willing to pay cash down, and thus get a discount on the original stipulated price. The property is being developed by three shafts and two tunnels. Forty-five men are at work. The Pittsburg people are working the Golden Zone, a group of claims situated on the west side of the mountain. They are working 33 men, and erecting a large concentrator, with the object of crushing their ore. The Trillium and Bell Frog are the names of two other properties in the neighborhood of Loomis, upon which more or less development work has been done.

HATTIE BELLE DEVELOPMENT.
President Vallentyne Has Issued a Most Encouraging Report to the Shareholders.

Mr. J. B. Vallentyne of Sunderland, president of the Hattie Belle Gold, Copper and Nickel Company of Parry Sound, has sent the following encouraging report to the shareholders of the company, under date of Nov. 6:

"After close and careful inspection of the development work done on our properties this summer it affords me very much pleasure to inform the shareholders of our company and the public generally of the very satisfactory results obtained. The greater part of the work has been done on the Lafex mine. Upon reaching a depth of 50 feet in a perpendicular shaft, the manager decided to cross-cut the mine to ascertain the width, which, upon inspection, proved to be a clearly defined vein 31 inches wide, richly impregnated with copper and other minerals. This information cannot but be very gratifying to every member of the company as it is to me. Mr. Lafex, who formerly owned the property, attempted to dispose of it to me, but the court held in my favor, and last week, upon hearing his evidence, the court dismissed his action with costs, thus establishing our interest and rendering our title to the property indisputable. No shareholder now need have any anxiety in regard to this matter."

"This action, instead of being an injury, has greatly enhanced the value of this property to the company, and has brought it into prominence as one of the richest mines in the district. The Board of Directors, which is to meet on the 11th inst., will consider the advisability of erecting a comfortable boarding house for the workmen, a blacksmith shop, shaft house, magazine and other equipment necessary for carrying on operations during the winter months. The results are so satisfactory throughout that the board will also determine upon an advance in the price of the stock, which they consider is worth very much more than it was six months ago. What advance may be placed on our stock I cannot say, but I take this opportunity of intimating to the present shareholders or others that an advance is contemplated on or before the 20th of this month, and the opportunity will be open to purchase stock up to this date at present prices."

"We would remind you that this property, as above mentioned, upon which so much work has been done this summer, is only one of four claims held by this company. Some of the best values on the mining men is as valuable as the after. In submitting this brief report to you, I do so in the true belief that every shareholder should be, and will be, made familiar with the development and progress of the company by I am sure, connected with very soon the Hattie Belle will become a dividend-paying company."

Mr. J. Hugo Ross of the firm of Fox & Ross writes to his firm from the Boundary Country regarding The Sallor mine of Camp McKinley as follows: "They are 25 feet in the cross-cut at the 100-foot level, and the width of the vein in the wall which appears to be four distinct veins." It will be remembered that the shaft was sunk at the junction of two veins.

The manager of The Sallor, in his last weekly report, dated Oct. 31, stated that he

MADE-TO-ORDER CLOTHING ONLY.

Getting Ready for the New Store Front....

Time given for the brick pillars to be properly settled, the next step is the placing of the steel beam across the front of our new store.

Then the new front will be put in, which in the meantime is being built.

Following this will come the placing of the new ceiling and the decorating of the walls.

Have you noticed what a splendid width the store shows with the hallway partition down?

An overcoat bargain whilst these alterations are going on.

Gentleman's Overcoat, made from new stock in beaver and mutton goods bought for the new store, made to your own measure, cut by our own cutters, and well tailored in every way. Good Italian lining, or wool lining, if you prefer it. We would have to have more money for these coats if we were in regular shape for business, but, pending the completion of the new store, we are taking customers' measures and completing goods for \$13.50.

HOBBERLIN BROS. CO., LIMITED.

153 YONGE ST., TORONTO,

Next Door to Old Stand.

THEY ERR MUCH

Who, blind to their own interests, choose poor Stationery for business or private correspondence. For commercial purpose our bonds are the acknowledged superiors of any on the market. For society use our original English Wedgewood is the

POPULAR FANCY.

It has won favor wherever it has been used because it is true to color, cheaper and better than the imported goods.

Envelopes in all sizes, shapes, qualities and for all purposes are a specialty with us. If you cannot procure our goods at your stationer send direct to us.

THE BARBER & ELLIS CO., LIMITED.

Manufacturing and Wholesale Stationers,

43 TO 49 BAY STREET, TORONTO.

had opened up three veins on the Rover, one of the properties belonging to The Sallor Co., lying between the present workings on the Sallor and the Cariboo. Work has been resumed on the Annie L. (or Cariboo No. 2), lying to the west of the Sallor, and the Emma, belonging to the Cariboo Company, and through the Bellevue, one of the Sallor Company's properties.

Toronto Mining Exchange.
Morning. Afternoon. Ask. Bid. Ask. Bid.

Ontario—
Am. Can. (Alice A.) 11 7 10 8
Empress 8 3 8 3
Hammond Reef 28 20 28 20
Golden Star 28 20 28 20
Olive 28 20 28 20
Saw Mill 18 12 18 12
Camp McKinley 120 120 120 120
Cariboo 118 105 115 110
Munich 12 12 12 12
Waterloo 12 12 12 12
Fontenoy 12 12 12 12
Cariboo-Hydraulic 130 100 125 105
Fairview Camp 6 6 6 6
Boundary Creek 110 103 110 104
Old Ironsides 85 82 85 82
Rathburn 9 9 9 9
Dardanelles 12 12 12 12
Morrison 12 12 12 12
Winning 32 32 32 32
St. Elmo 32 32 32 32
Athabasca 32 32 32 32
Dundee 32 32 32 32
Dardanelles 12 12 12 12
Noble Five 21 18 21 18
Payne 120 112 117 110
Rambler-Cariboo 61 50 61 50
Wonderful Group 5 4 5 4
St. Elmo 5 4 5 4
Tamarac 11 9 11 9
Republic Camp 118 116 118 114
Deer Trail No. 2 21 20 21 20
Bonanza 10 10 10 10
Van Andra 8 8 8 8
Texas Island 14 12 14 12
Big Three 3 2 3 2
Deer Park 73 70 73 70
Iron Mask 8 8 8 8
Homestake 8 8 8 8
Fairview 10 9 10 9
Monte Cristo 8 8 8 8
Northern Belle 24 14 24 14
St. Paul 2 1 2 1
Silver Bell 6 6 6 6
St. Elmo 6 6 6 6
Virginia 6 6 6 6
War Eagle 272 265 288 283
White Bear 4 3 4 3
Development Companies 4 3 4 3
R. C. Gold Fields 4 3 4 3
Gold Hills 4 3 4 3

Morning sales: Golden Star, 500 at 35; 1,000 at 35; Waterloo, 500, 500, 2,000 at 13; Fontenoy, 2,000 at 13; 1,000 at 13; Rathburn, 500, 500 at 8; Van Andra (W.D.), 500 at 7; Winnipeg, 1,000 at 31; White Bear, 1,000 at 28; Golden Star, 500 at 33; Rathburn, 1,000 at 8; Monte Cristo, 250 at 8, 1,000 at 7; Total 4,520 shares.

Afternoon sales: Fairview Corp., 500 at 6; Monte Cristo, 1,000 at 8; 2,000 at 8; 10,000 at 7; Total 10,000 at 7; Ask 9; Bid 7; 1,000, 500 at 7.

Morning sales: Golden Star, 500 at 35; 1,000 at 35; Waterloo, 500, 500, 2,000 at 13; Fontenoy, 2,000 at 13; 1,000 at 13; Rathburn, 500, 500 at 8; Van Andra (W.D.), 500 at 7; Winnipeg, 1,000 at 31; White Bear, 1,000 at 28; Golden Star, 500 at 33; Rathburn, 1,000 at 8; Monte Cristo, 250 at 8, 1,000 at 7; Total 4,520 shares.

Afternoon sales: Fairview Corp., 500 at 6; Monte Cristo, 1,000 at 8; 2,000 at 8; 10,000 at 7; Total 10,000 at 7; Ask 9; Bid 7; 1,000, 500 at 7.

Morning sales: Golden Star, 500 at 35; 1,000 at 35; Waterloo, 500, 500, 2,000 at 13; Fontenoy, 2,000 at 13; 1,000 at 13; Rathburn, 500, 500 at 8; Van Andra (W.D.), 500 at 7; Winnipeg, 1,000 at 31; White Bear, 1,000 at 28; Golden Star, 500 at 33; Rathburn, 1,000 at 8; Monte Cristo, 250 at 8, 1,000 at 7; Total 4,520 shares.

Afternoon sales: Fairview Corp., 500 at 6; Monte Cristo, 1,000 at 8; 2,000 at 8; 10,000 at 7; Total 10,000 at 7; Ask 9; Bid 7; 1,000, 500 at 7.

Morning sales: Golden Star, 500 at 35; 1,000 at 35; Waterloo, 500, 500, 2,000 at 13; Fontenoy, 2,000 at 13; 1,000 at 13; Rathburn, 500, 500 at 8; Van Andra (W.D.), 500 at 7; Winnipeg, 1,000 at 31; White Bear, 1,000 at 28; Golden Star, 500 at 33; Rathburn, 1,000 at 8; Monte Cristo, 250 at 8, 1,000 at 7; Total 4,520 shares.

Afternoon sales: Fairview Corp., 500 at 6; Monte Cristo, 1,000 at 8; 2,000 at 8; 10,000 at 7; Total 10,000 at 7; Ask 9; Bid 7; 1,000, 500 at 7.

Morning sales: Golden Star, 500 at 35; 1,000 at 35; Waterloo, 500, 500, 2,000 at 13; Fontenoy, 2,000 at 13; 1,000 at 13; Rathburn, 500, 500 at 8; Van Andra (W.D.), 500 at 7; Winnipeg, 1,000 at 31; White Bear, 1,000 at 28; Golden Star, 500 at 33; Rathburn, 1,000 at 8; Monte Cristo, 250 at 8, 1,000 at 7; Total 4,520 shares.

Afternoon sales: Fairview Corp., 500 at 6; Monte Cristo, 1,000 at 8; 2,000 at 8; 10,000 at 7; Total 10,000 at 7; Ask 9; Bid 7; 1,000, 500 at 7.

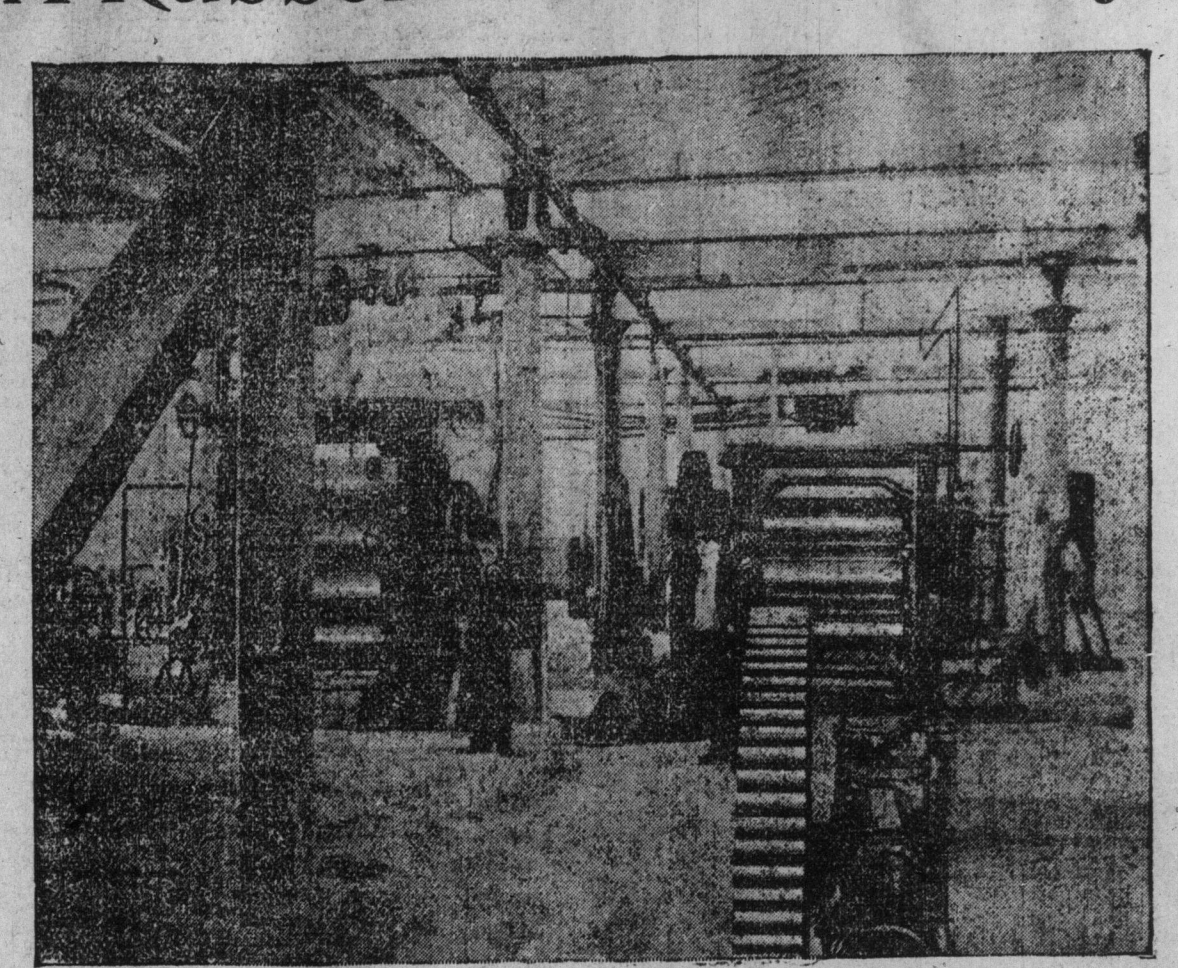
Morning sales: Golden Star, 500 at 35; 1,000 at 35; Waterloo, 500, 500, 2,000 at 13; Fontenoy, 2,000 at 13; 1,000 at 13; Rathburn, 500, 500 at 8; Van Andra (W.D.), 500 at 7; Winnipeg, 1,000 at 31; White Bear, 1,000 at 28; Golden Star, 500 at 33; Rathburn, 1,000 at 8; Monte Cristo, 250 at 8, 1,000 at 7; Total 4,520 shares.

Afternoon sales: Fairview Corp., 500 at 6; Monte Cristo, 1,000 at 8; 2,000 at 8; 10,000 at 7; Total 10,000 at 7; Ask 9; Bid 7; 1,000, 500 at 7.

Morning sales: Golden Star, 500 at 35; 1,000 at 35; Waterloo, 500, 500, 2,000 at 13; Fontenoy, 2,000 at 13; 1,000 at 13; Rathburn, 500, 500 at 8; Van Andra (W.D.), 500 at 7; Winnipeg, 1,000 at 31; White Bear, 1,000 at 28; Golden Star, 500 at 33; Rathburn, 1,000 at 8; Monte Cristo, 250 at 8, 1,000 at 7; Total 4,520 shares.

Afternoon sales: Fairview Corp., 500 at 6; Monte Cristo, 1,000 at 8; 2,000 at 8; 10,000 at 7; Total 10,000 at 7; Ask 9; Bid 7; 1,000, 500 at 7.

A Rubber and Its History.



We are putting on a rubber exhibit in our shoe stores here, both interesting and educating. This is a display showing how "Slater Shoe Rubbers" are made and the material in their make-up, demonstrating the various stages of manufacture through which they pass.

Stage 1 shows the rubber in its pure state exactly as it arrives here from Para, in Brazil, to which country we are indebted for the finest rubber in the world.

This rubber is again shown in stage 2, just from the Crushing Machine, which thoroughly cleanses it from any possible impurity.

In stages Nos. 3 to 8 may be seen the various processes: sheeting the rubber for both uppers and soles, putting it on the lasts, etc., till ready for the finisher.

The above cut represents one of the rooms with its colossal machines in full blast making "Slater Shoe Rubbers." These machines are very latest perfected American rubber machinery and turn out the highest grade Rubber—in other words "Slater Shoe Rubbers."

Stage 9 shows the finished Rubber with name and price branded on the soles.

An important feature in connection with this brand is that it is not put on until the finished Rubber has passed through the hands of an examining expert and been pronounced perfect.

This verifies one of the superiorities of "Slater Shoe Rubbers" over ordinary rubbers, the latter being branded during the process of manufacture, before they are finished.

When you see the name "Slater Shoe Rubber" and the price on the sole of a rubber you can have absolute confidence, as it is unquestionably guaranteed.

FOR SALE ONLY AT

The Slater Shoe Stores,

80 King Street West and 123 Yonge Street.

TORONTO. MONTREAL. OTTAWA.

GOLD STOCKS! SPECIAL OFFERINGS!

Can. Gold Fields Syn.	5,000 to 10,000
Waterloo	1,000 to 5,000
Fairview Corp.	1,000 to 5,000
Rambler-Cariboo	1,000 to 3,500
Winnipeg	500 to 3,000
Brandon Golden Crown	1,000 to 5,000
Rathburn	2,000 to 5,000
Van Andra	2,000 to 5,000
Deer Trail No. 2	500 to 3,500
King	500
White Bear	2,000 to 5,000
Gold Hills	500 to 3,000
Monte Cristo	500 to 5,000

Watch this List of STOCKS.

Write, wire or telephone orders. Telephone 2765. Members Toronto Mining Exchange and Mining Section Board of Trade.

Native Copper CLARKE & CO.

Telephone 1607. 63 Yonge-st., Toronto. Buy and sell all mining stocks on commission. Give us a trial with your orders. We send out at intervals confidential reports, giving information as to various mines. The market is improving very considerably and you ought to have some of the good things. We are always ready to give advice to the best of our ability. Call, wire, or phone.

If you are thinking of investing in copper stocks don't forget that the Superior Gold and Copper Company, Limited, have a native copper property of great promise on the north shore of Lake Superior. The native copper is found in short form in the conglomerate that is in the argillaceous formation. This is the only instance where native copper is found in conglomerate, outside of the Calumet and Hecla. The ore so far is very rich in shot native copper. Send for reports and particulars.

CURRY & KITELEY, 52 YONGE ST.

Robert Cochran (Member of Toronto Stock Exchange) Stocks bought and sold on Toronto, New York and Montreal Stock Exchanges. Also Chicago business and mining shares transacted. Phone 216.

GREAT SHIPBUILDING FUSION. Henry Seligman Admits There is a Big Scheme on, But Will Not Give Details.

New York, Nov. 13.—Henry Seligman of J. & W. Seligman and Co., who are said to have a hand in the financing of a syndicate that is being formed for buying five of the largest shipbuilding plants in the United States, when interviewed on the subject said: "I will say that negotiations are in progress for a combination of several of the largest shipbuilding companies in the country. They have not yet been completed. The amount involved may be said to be in the neighborhood of \$20,000,000. I am not at liberty to discuss the matter further at this time, nor can I give the names of the concerns or individuals who are interested in the project."

Settled Out of Court. At the suggestion of Mr. Justice MacMahon the suit of H. H. Cook against H. L. M. Weller, his former clerk, was settled out of court yesterday afternoon. The suit was over \$2,000. Mr. Cook claimed that in H. L. Weller acted only as his clerk and was to have one-third of the profit, while the defendant claimed that he acted solely for himself.

Hunters Are Successful. Many deer are arriving these days from the hunting fields of Muskoka district. Yesterday about 50 excellent specimens came in on the North Bay express.

TO CURE A COLD IN ONE DAY. Take Laxative Bromo Quinine Tablets. All druggists refund the money if it fails to cure. 25c. E. W. Grove's signature is on each box.

School Trustees Will Attend. The funeral this afternoon at 2:30 of late School Trustee James H. Burns will take residence, 365 Bathurst-st., to Prospect Cemetery, will be attended by the Public School Board.

Fairview Corp. Monte Cristo VICTORY TRIUMPH ALICE A. DEER TRAIL NO. 2 DEER PARK

WILSON BARR & SONS. Sun Life Bldg., Hamilton, 35 King St., Toronto.

Price List of Stocks and Bonds, Nov. 13. Hides, No. 1, 11. No. 2, 10. No. 3, 9. No. 4, 8. No. 5, 7. No. 6, 6. No. 7, 5. No. 8, 4. No. 9, 3. No. 10, 2. No. 11, 1. No. 12, 1. No. 13, 1. No. 14, 1. No. 15, 1. No. 16, 1. No. 17, 1. No. 18, 1. No. 19, 1. No. 20, 1. No. 21, 1. No. 22, 1. No. 23, 1. No. 24, 1. No. 25, 1. No. 26, 1. No. 27, 1. No. 28, 1. No. 29, 1. No. 30, 1. No. 31, 1. No. 32, 1. No. 33, 1. No. 34, 1. No. 35, 1. No. 36, 1. No. 37, 1. No. 38, 1. No. 39, 1. No. 40, 1. No. 41, 1. No. 42, 1. No. 43, 1. No. 44, 1. No. 45, 1. No. 46, 1. No. 47, 1. No. 48, 1. No. 49, 1. No. 50, 1. No. 51, 1. No. 52, 1. No. 53, 1. No. 54, 1. No. 55, 1. No. 56, 1. No. 57, 1. No. 58, 1. No. 59, 1. No. 60, 1. No. 61, 1. No. 62, 1. No. 63, 1. No. 64, 1. No. 65, 1. No. 66, 1. No. 67, 1. No. 68, 1. No. 69, 1. No. 70, 1. No. 71, 1. No. 72, 1. No. 73, 1. No. 74, 1. No. 75, 1. No. 76, 1. No. 77, 1. No. 78, 1. No. 79, 1. No. 80, 1. No. 81, 1. No. 82, 1. No. 83, 1. No. 84, 1. No. 85, 1. No. 86, 1. No. 87, 1. No. 88, 1. No. 89, 1. No. 90, 1. No. 91, 1. No. 92, 1. No. 93, 1. No. 94, 1. No. 95, 1. No. 96, 1. No. 97, 1. No. 98, 1. No. 99, 1. No. 100, 1. No. 101, 1. No. 102, 1. No. 103, 1. No. 104, 1. No. 105, 1. No. 106, 1. No. 107, 1. No. 108, 1. No. 109, 1. No. 110, 1. No. 111, 1. No. 112, 1. No. 113, 1. No. 114, 1. No. 115, 1. No. 116, 1. No. 117, 1. No. 118, 1. No. 119, 1. No. 120, 1. No. 121, 1. No. 122, 1. No. 123, 1. No. 124, 1. No. 125, 1. No. 126, 1. No. 127, 1. No. 128, 1. No. 129, 1. No. 130, 1. No. 131, 1. No. 132, 1. No. 133, 1. No. 134, 1. No. 135, 1. No. 136, 1. No. 137, 1. No. 138, 1. No. 139, 1. No. 140, 1. No. 141, 1. No. 142, 1. No. 143, 1. No. 144, 1. No. 145, 1. No. 146, 1. No. 147, 1. No. 148, 1. No. 149, 1. No. 150, 1. No. 151, 1. No. 152, 1. No. 153, 1. No. 154, 1. No. 155, 1. No. 156, 1. No. 157, 1. No. 158, 1. No. 159, 1. No. 160, 1. No. 161, 1. No. 162, 1. No. 163, 1. No. 164, 1. No. 165, 1. No. 166, 1. No. 167, 1. No. 168, 1. No. 169, 1. No. 170, 1. No. 171, 1. No. 172, 1. No. 173, 1. No. 174, 1. No. 175, 1. No. 176, 1. No. 177, 1. No. 178, 1. No. 179, 1. No. 180, 1. No. 181, 1. No. 182, 1. No. 183, 1. No. 184, 1. No. 185, 1. No. 186, 1. No. 187, 1. No. 188, 1. No. 189, 1. No. 190, 1. No. 191, 1. No. 192, 1. No. 193, 1. No. 194, 1. No. 195, 1. No. 196, 1. No. 197, 1. No. 198, 1. No. 199, 1. No. 200, 1. No. 20