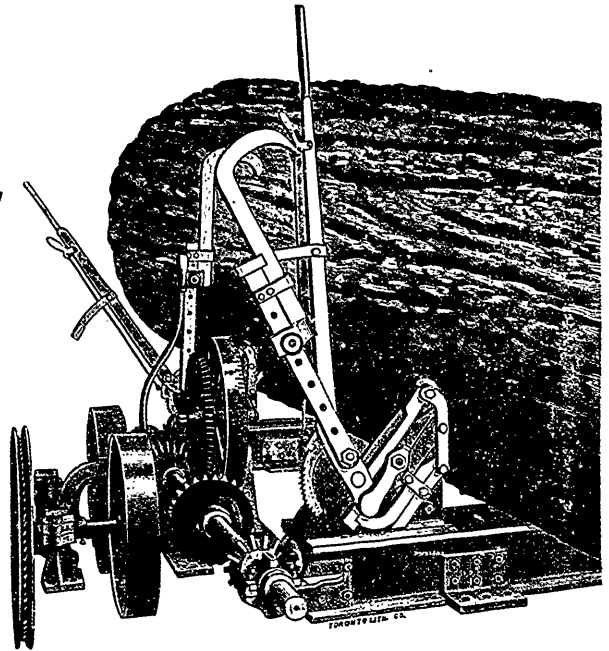
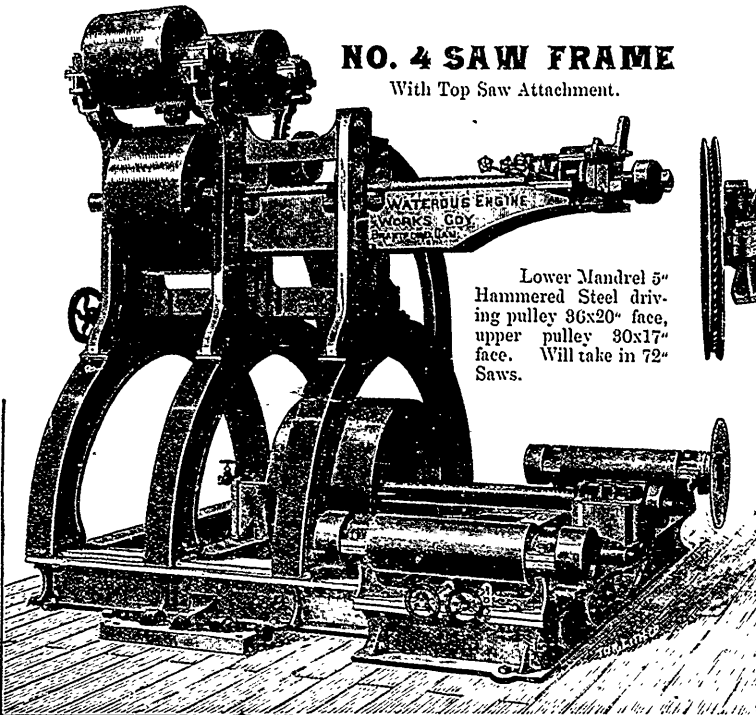


# HEAVY SAWMILL MACHINERY

## NO. 4 SAW FRAME With Top Saw Attachment.

Lower Mandrel 5"  
Hammered Steel driving  
pulley 36x20" face,  
upper pulley 30x17"  
face. Will take in 72"  
Saws.



## No. 6 Steel Log Carriage

Made of Wrought and Cast Steel throughout.

SHORT HEAVY KNEES, with roller at top, moved with heavy steel screws.

SET WORKS are our improved power set, actuated by steel cable and entirely under the control of the setter.

LOGSEATS open any distance from saw desired. Carriages made any length.

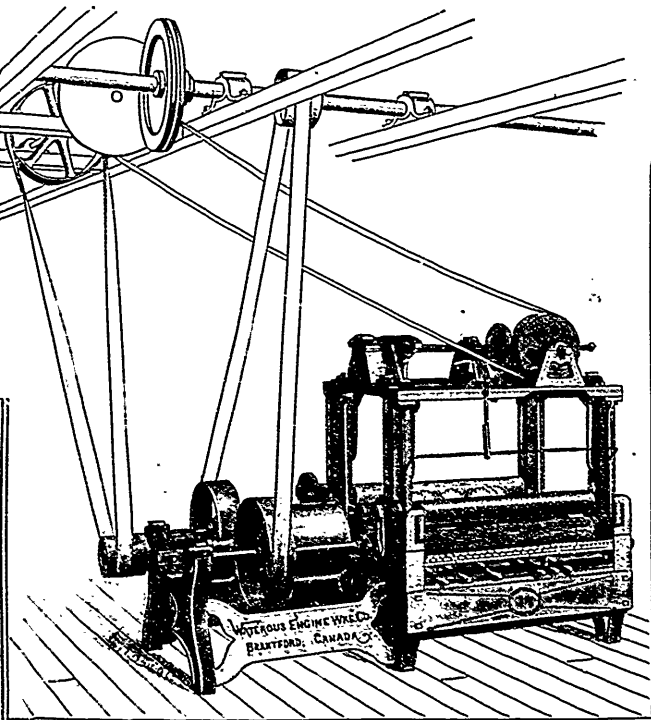
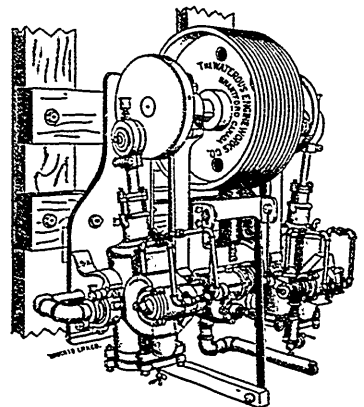
FEED ; Carriage is driven by our Oscillating Engines, with 14 x 20 cylinders, making an exceedingly strong and uniform feed.

## Champion Gang Edger.

The wide Cants 50 to 60 inches wide, 6 to 9 inches thick, are dropped on rollers and run through the 6 saw Champion Edger, using 6 Hoe bit tooth saws, ripping them into all sizes of dimension timber.

The 4 machines described above, with 6 blocks in the carriage, will weigh in the vicinity of 35 tons.

Send for Circulars and Estimates on full Sawmill Plants.



*Waterous Engine Works Co.,  
BRANTFORD, CAN.*