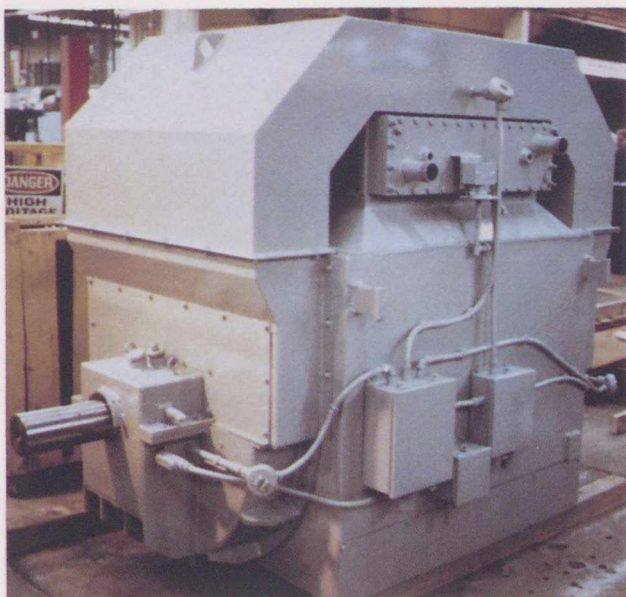


CAPABILITY GUIDE

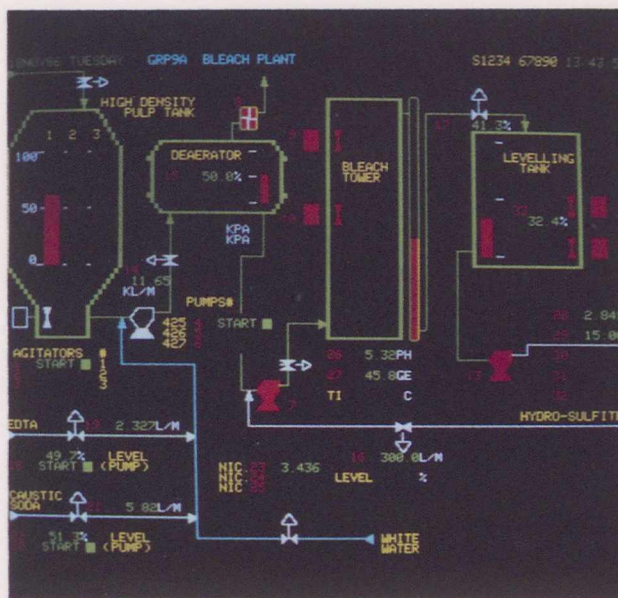


Reliance Electric Ltd.

678 Erie Street
Stratford
Ontario
N5A 6W1

For information:
Telephone: (519) 271-3630
Telex: 069-55116
Facsimile: (519) 271-8213

The company's major products are large AC motors and engineered drive systems. The AC motors, up to 10,000 hp, are engineered, designed and manufactured from the basic electrical steel and copper to the finished products and shipped mainly to Canadian and U.S. customers. Engineered variable speed drive systems are also designed and engineered in Stratford. The equipment is used to power and control various manufacturing process lines such as paper machines, pulp machines, steel billet casting lines, film and plastic lines, slitters and cut-to-length lines, rod mills and shears.



SACDA INC.

343 Dundas Street, Suite 500,
London
Ontario
N6B 1V5

For information:
Telephone: (519) 679-6570
Telex: 064-5634
Facsimile: (519) 679-3977

SACDA Inc. provides process simulation software and services to the pulp and paper and other water-based industries on a worldwide basis. MASSBAL-MK 11, a steady-state program that calculates heat and mass balances, uses a simultaneous method of calculation and can handle large problems quickly. It performs data reconciliation and optimization, and has a graphical front end, CADSIM, which allows users to draw the flowsheet on the screen. CADSIM then executes MASSBAL MK 11 and displays the results. Both are primarily used by process and process design engineers. The TRAINER system is a suite of dynamic process simulation programs used in operator training. The system uses the actual DCS console, graphics and keyboard used in the mill. The software is housed in a simulation computer which is used by SACDA engineers to build models of a process or processes. The models and software are interfaced to the DCS console and an instructor console. The instructor can set training exercises and initiate malfunctions for the trainee. The operator gains invaluable hands-on experience before start-up. The results have been faster start-ups, fewer accidents/fewer shutdowns, and an increased ability to handle emergencies.